

REFERENCE PLAN

TO ACCOMPANY CITY OF PRINCE GEORGE BY-LAW NO: 2444
 APPROPRIATING UNDER SECTION 521 OF THE
 MUNICIPAL ACT THOSE PARTS OF BLOCK 13 &
 ROADS and LANES CONTAINED THEREIN
 PLAN 796, D. L. 932
 AND BLOCK 1, 2, 3 & 23 and
 ROADS and LANES CONTAINED THEREIN
 PLAN 701, D. L. 934, CARIBOO DISTRICT

PLAN NO. 21047
 Deposited in the Land Registry Office at
 Prince George this 15. day of JULY, 1972.

E.T. SCHOOLEY
 Registrar
 (Licence 1.2.0)

Scale: 1" = 40'

BOOK OF REFERENCE	
DESCRIPTION	AREA
LOT 13, BLK. 13, PLAN 796, D.L. 932	895 sq. ft.
LOT 14, " " " " " " " "	1707 sq. ft.
LOT 15, " " " " " " " "	2480 sq. ft.
LOT 16, " " " " " " " "	2725 sq. ft.
LOT 17, " " " " " " " "	2225 sq. ft.
LOT 18, " " " " " " " "	1778 sq. ft.
LOT 19, " " " " " " " "	1358 sq. ft.
LOT 35, " " " " " " " "	800 sq. ft.
LOT 36, " " " " " " " "	2590 sq. ft.
LOT 37, " " " " " " " "	1940 sq. ft.
LOT 38, " " " " " " " "	3452 sq. ft.
LANES AND ROADS, PLAN 796, D.L. 932	11218 sq. ft.
LOT 5, BLK. 1, PLAN 701, D.L. 934	2129 sq. ft.
LOT 6, BLK. 1, " " " " " "	750 sq. ft.
LOT 1, BLK. 2, " " " " " "	3721 sq. ft.
LOT 2, BLK. 2, " " " " " "	3721 sq. ft.
LOT 3, BLK. 2, " " " " " "	3721 sq. ft.
LOT 4, BLK. 2, " " " " " "	3471 sq. ft.
LOT 8, BLK. 2, " " " " " "	1357 sq. ft.
LOT 15, BLK. 2, " " " " " "	21 sq. ft.
LOT 14, BLK. 2, " " " " " "	500 sq. ft.
LOT 13, BLK. 2, " " " " " "	1254 sq. ft.
LOT 12, BLK. 2, " " " " " "	850 sq. ft.
LOT 11, BLK. 2, " " " " " "	493 sq. ft.
LOT 10, BLK. 2, " " " " " "	821 sq. ft.
LOT 9, BLK. 2, " " " " " "	1249 sq. ft.
LOT 1, BLK. 3, " " " " " "	3634 sq. ft.
LOT 15, " " " " " " " "	3225 sq. ft.
LOT 14, " " " " " " " "	2725 sq. ft.
LOT 13, " " " " " " " "	2446 sq. ft.
LOT 12, " " " " " " " "	1866 sq. ft.
LOT 11, " " " " " " " "	1317 sq. ft.
LOT 10, " " " " " " " "	1417 sq. ft.
LOT 9, BLK. 3, PLAN 701, D.L. 934	1417 sq. ft.
LANES AND ROADS, PLAN 701, D.L. 934	36438 sq. ft.
LOT E, BLK. 23, PLAN 19342, D.L. 934	1186 sq. ft.
TOTAL	118744 sq. ft.
	25914 ac.

Bearings are astronomic derived from
 OPK on NORTH B'DY. OF DIERENBAKER DRIVE
 shown as S 89° 48' 20" E. ON PLAN 19342
 •IP..... Standard Iron Post.
 •PP..... Standard Pipe Post.
 •PCan..... Standard Concrete Post.
 O..... Denotes "0" ft.
 W..... Denotes "width"

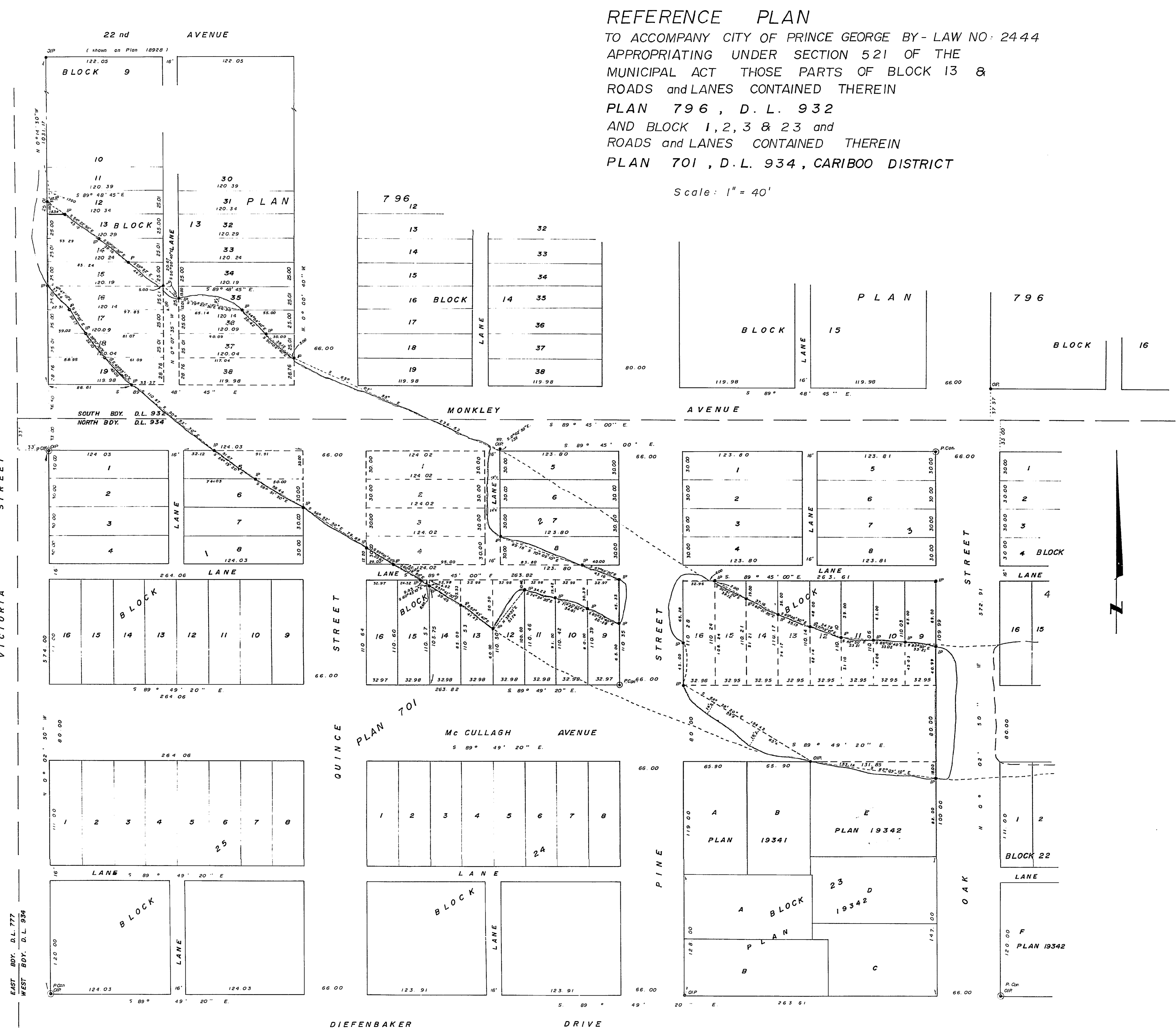
I, A. Daniluck, of the City of Prince George,
 British Columbia Land Surveyor make oath and
 say that I was present at and did personally
 superintend the survey represented by this plan
 and that the survey and plan are correct.
 The said survey was completed on
 the 25. day of September, 1972.
 A. Daniluck, B.C.L.S.

Approved under the Land Registry Act
 this 27. day of September, 1972.
 P. P. O. P. O.
 Approving Officer,
 City of Prince George
 Resigned June 22, 1973

Sworn before me at Prince George, B.C.,
 this 15. day of July, 1972.
 Commissioner for taking affidavits for
 British Columbia.

This plan lies within the Fraser Fort
 George Regional District

McWilliam, Whyte, Gable, & Associates,
 B. C. Land Surveyors,
 Prince George Kamloops Smithers.
 REF. NO. 72100-8B



MILBURN AVENUE
 LOT 7 PLAN 19518
 R/W PLAN 17964
 LOT 2 PLAN 17401
 VICTORIA STREET
 SOUTH B'DY. D.L. 932
 NORTH B'DY. D.L. 934
 EAST B'DY. D.L. 777
 WEST B'DY. D.L. 934