

EXPLANATORY PLAN OF EXPROPRIATION OF RIGHT-OF-WAY THROUGH
LOT 5, PLAN 20592
DISTRICT LOT 2101
CARIBOO DISTRICT - BRITISH COLUMBIA

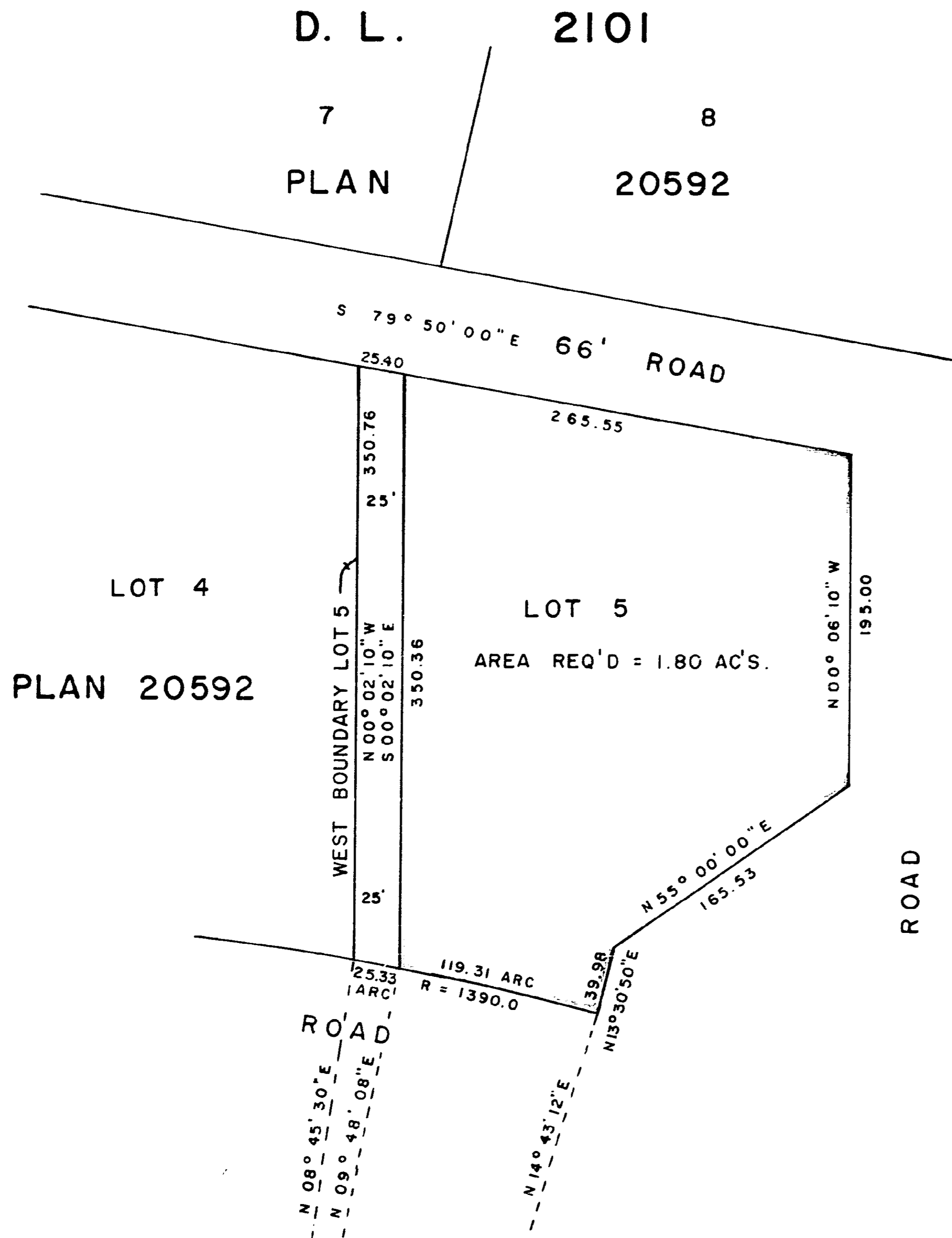
SCALE: 1" = 100'

PLAN N^o 21022

Deposited in the Land Registry
Office at Prince George, B.C. this
29 day of JUNE, 1973.

E.T. SCHOOLEY
Registrar

Per: *J. J. Finckel*
(SURVEYOR L.R.O.)



CERTIFIED CORRECT
According to measurements shown
on Plan 20592.
This 13 day of June, 1973.

H.C. Engler
H.C. ENGLER, B.C.L.S.

NECHAKO IMPROVEMENT DISTRICT

A. Holdner
[Signature]

This plan lies within the Fraser - Fort George
Regional District.

W.D. USHER & ASSOCIATES
LAND SURVEYORS
PRINCE GEORGE - B.C.