

PLOTTED (HM)

RECEIVED

JUL 9 1978

PLAN OF SUBDIVISION OF
LOT 2, PLAN 20507
DISTRICT LOT 1429
CARIBOO DISTRICT - BRITISH COLUMBIA

CITY ASSESSOR
PRINCE GEORGE

SCALE: 1" = 100'

PLAN N^o **20975**

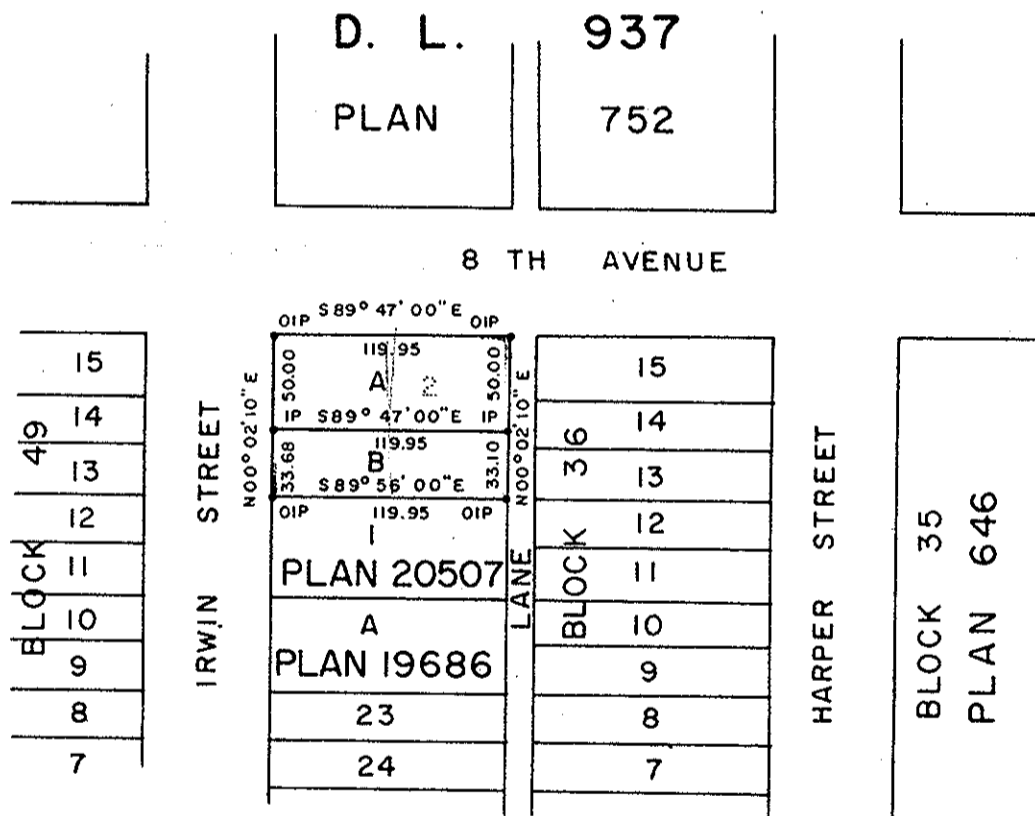
NOTE: Bearings are astronomic, derived from the
East boundary of Lot 2, Plan 20507.

Deposited in the Land Registry
Office at Prince George, B.C. this
13. day of JUNE, 1973.

LEGEND: •OIP denotes an old iron pin found.
•IP denotes an iron pin set.

E.T. SCHOOLEY
Registrar

per: *J. J. Finstade*
(SURVEYOR L.R.O.)



I, DONALD A. DUFFY of the City of Prince George,
a British Columbia Land Surveyor, make oath and say
that I was present at and did personally superintend
the survey represented by this plan and that the survey
and plan are correct. The said survey was completed
on the 1st day of June, 1973.

[Signature]
B.C.L.S.

Sworn before me this 7TH
day of JUNE, 1973

[Signature]
A, Commissioner for taking Affidavits
for British Columbia.

Owner *Enrico Massini*

Approved under the Land Registry Act
this 6TH day of JUNE, 1973

Witness *Rosa Bugliarini C. E. Ost.*

Approving Officer, City of Prince George

This plan lies within the Fraser-Fort George
Regional District.