

563-0501

PLAN OF SUBDIVISION OF
PARCEL A, (E 3620), PLAN 6135
DISTRICT LOT 931
CARIBOO DISTRICT, BRITISH COLUMBIA

SCALE: 1" = 100'

NOTE: Bearings are astronomic, derived from the South boundary of Twentieth Avenue as shown on Plan 7544.

LEGEND: •OIP denotes an old iron pin found.
•IP denotes an iron pin set.

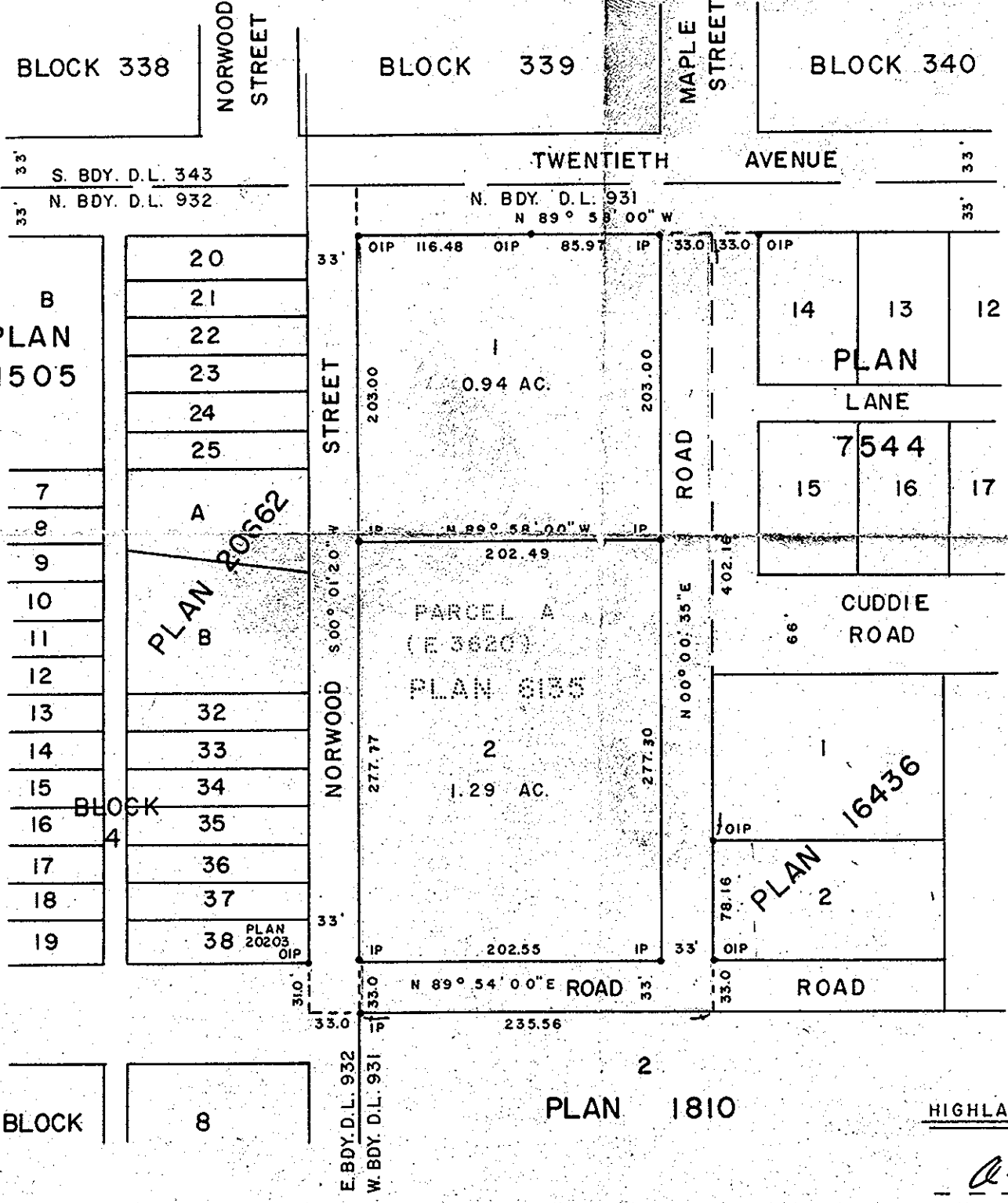
PLAN N^o **20939**

Deposited in the Land Registry Office at Prince George, B.C. this 4. day of JUNE, 1973.

E.T. SCHOOLEY
Registrar

per: *J. Finstade*
(SURVEYOR L.R.O.)

PLAN 1268 - D.L. 343



PLAN 796 - D.L. 932

D.L. 931

HIGHLANDS HOLDINGS LTD.

A. E. P. Adair

Mortgagee

Witness

CENTRE CITY TOWERS LTD.

Approved under the Land Registry Act this 14 day of April, 1973

Deanna W. Johnson
Approving Officer, Village South Fort George

This plan lies within the Fraser-Fort George Regional District.

I, DONALD A. DUFFY of the City of Prince George, a British Columbia Land Surveyor, make oath and say that I was present at and did personally supervise the survey represented by this plan and that the survey and plan are correct. The said survey was completed on the 19th day of April, 1973

Sworn before me this 19th day of April, 1973

I E. J. ...
A Commissioner for taking Affidavits for British Columbia.

W. D. USHER & ASSOCIATES
LAND SURVEYORS
PRINCE GEORGE - B.C.
GC 15 4986