

Roll 28114

RECEIVED

JUN 20 1973

CITY ASSESSOR
PRINCE GEORGE

PLAN N^o 20937

Deposited in the Land Registry
Office at Prince George, B.C. this
1st day of JUNE, 1973.

Copy sent to
Records June 26/73

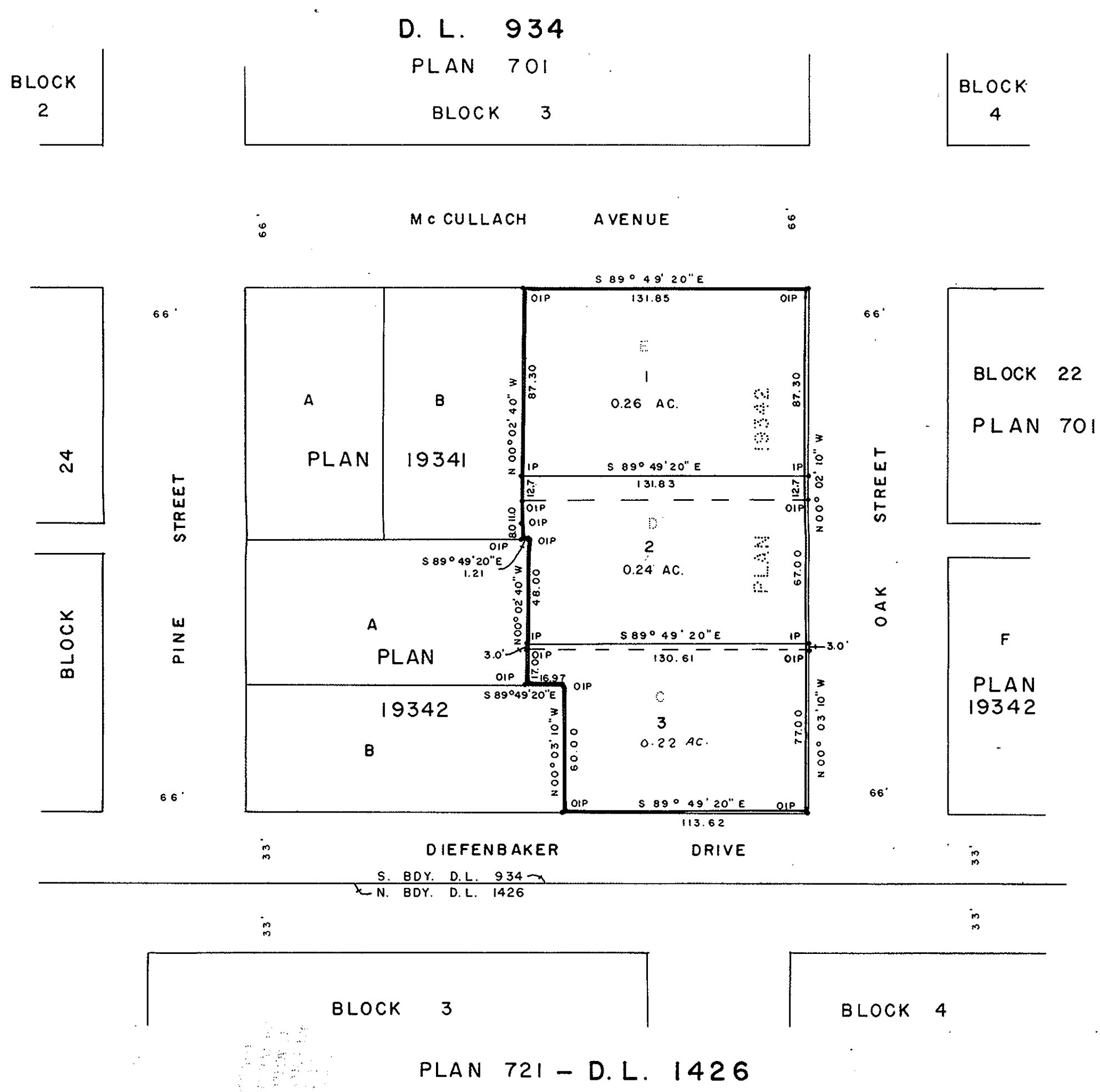
C. T. SCHOOLEY
Registrar

PLAN OF SUBDIVISION OF
LOTS C, D & E, PLAN 19342
DISTRICT LOT 934
CARIBOO DISTRICT, BRITISH COLUMBIA

SCALE: 1" = 50'

NOTE: Bearings are astronomic, derived from the
North boundary of Lot E, Plan 19342.

LEGEND: • OIP denotes an old iron pin found.
• IP denotes an iron pin set.



I, DONALD A. DUFFY of the City of Prince George,
a British Columbia Land Surveyor, make oath and say
that I was present at and did personally superintend
the survey represented by this plan and that the survey
and plan are correct. The said survey was completed
on the 9th day of APRIL, 1973.

BIDDLE HOLDINGS LTD.
[Signature]

Mortgagee -----
Witness -----

Approved under the Land Registry Act
this 14th day of APRIL, 1973

[Signature]
Approving Officer, City of Prince George

Sworn before me this 11th
day of APRIL, 1973

[Signature]
A Commissioner for taking Affidavits
for British Columbia.

This plan lies within the Fraser-Fort George
Regional District.

W. D. USHER & ASSOCIATES
LAND SURVEYORS
PRINCE GEORGE B.C.
FK 56 3 225 D