

PLAN OF SUBDIVISION OF PART OF
 LOT 1, PLAN 16708
DISTRICT LOT 2433
 CARIBOO DISTRICT, BRITISH COLUMBIA

SCALE: 1" = 100'

NOTE: Bearings are astronomic, derived from the West boundary of Lot 1, Plan 16708.

LEGEND: •OIP denotes an old iron pin found.
 •IP denotes an iron pin set.

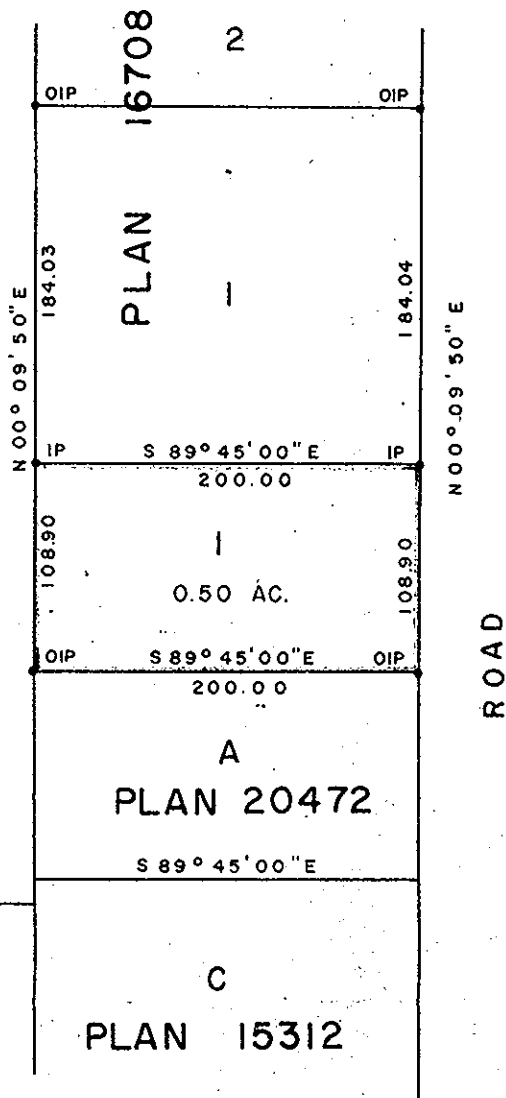
PLAN N^o **20914**

Deposited in the Land Registry Office at Prince George, B.C. this 18 day of MAY, 1973.

E.T. SCHOOLEY
 Registrar

Per: *I. S. Finlayson*
 (SURVEYOR L.R.O.)

D. L. 2433
 A
 PLAN 15312



I, DONALD A. DUFFY, of the City of Prince George, a British Columbia Land Surveyor, make oath and say that I was present at and did personally superintend the survey represented by this plan and that the survey and plan are correct. The said survey was completed on the 7 day of SEP., 1972.

Donald A. Duffy
 B.C.L.S.

Sworn before me this 15 day of DEC., 1972

[Signature]
 A Commissioner for taking Affidavits for British Columbia.

Owner *Alban*

Witness *Robbie*

REAPPROVED
 This 15th day of MAY, 1973.

[Signature]
 Approving Officer, Dept. of Highways

Approved under the Land Registry Act this 15 day of DECEMBER, 1972.

[Signature]
 Approving Officer, Dept. of Highways.

This plan lies within the Fraser-Fort George Regional District.