

# EXPLANATORY PLAN OF RIGHT OF WAY OVER PART OF LOTS 11 AND 12, DISTRICT LOT 2101 CARIBOO DISTRICT, PLAN 19954

## PLAN 20908

Scale :- 1 inch = 30 feet .

Bearings are astronomic, referred to Plan 19954.

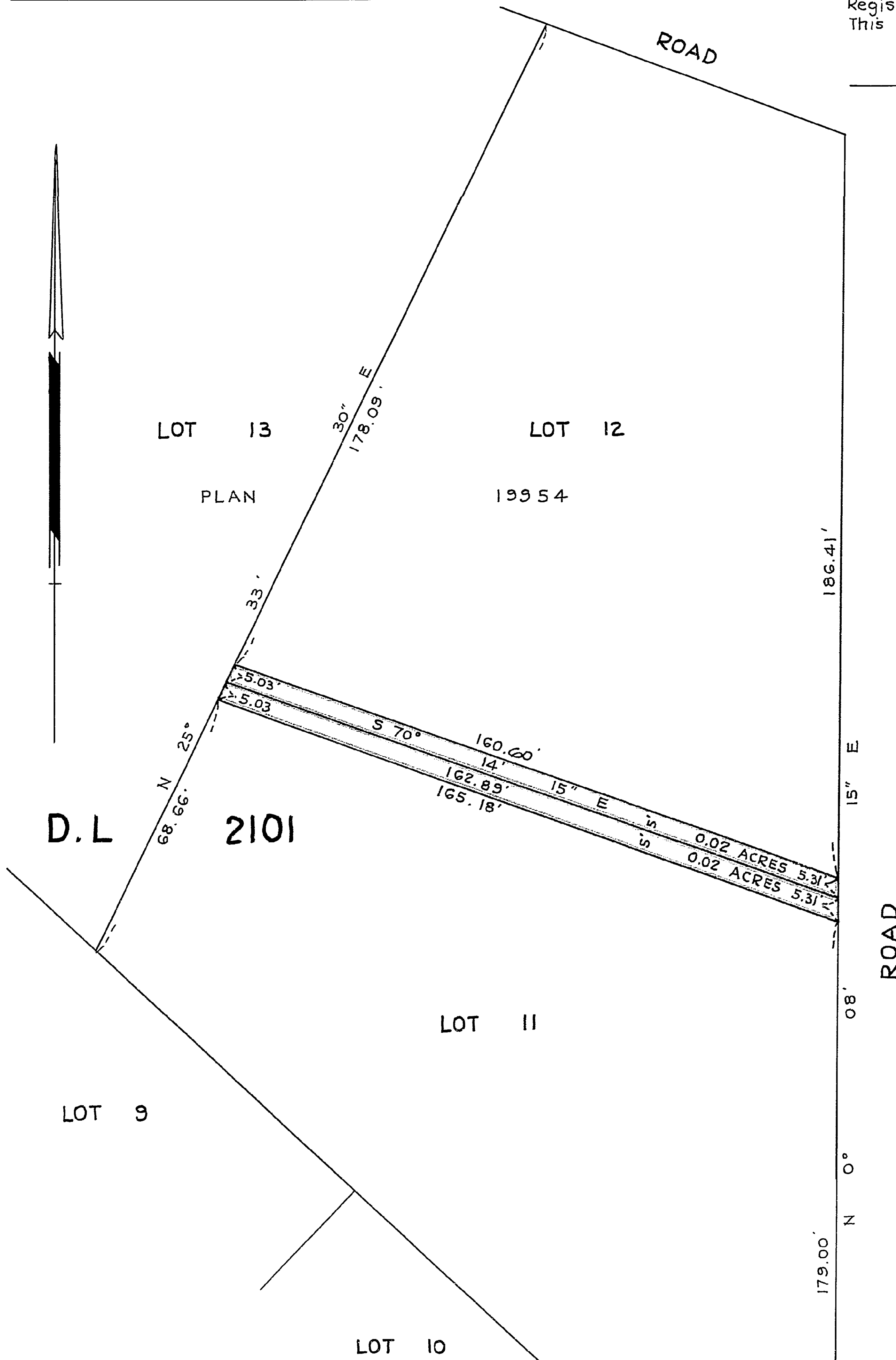
FOR PURPOSES OF ELECTRICAL POWER DISTRIBUTION.

Deposited in the Land Registry  
Office at Prince George, B.C.  
under Section 118h(i), Land  
Registry Act.  
This 18. day of MAY 1973 .

E.T. SCHOOLEY

Registrar

Per: *[Signature]*  
(SURVEYOR L.R.O.)



BOOK OF REFERENCE	
DESCRIPTION	AREA .
LOT 11, D.L 2101, CARIBOO DISTRICT, PL. 19954 .	0.02 ACRES .
LOT 12, D.L. 2101, CARIBOO DISTRICT, PL. 19954	0.02 ACRES .

Certified correct according to  
Land Registry Office Records.  
This 17<sup>th</sup> day of April ,1973.

*[Signature]*  
B.C.L.S.

THIS PLAN LIES WITHIN THE FRASER-  
FORT GEORGE REGIONAL DISTRICT.

LAND SURVEY SECTION,  
B.C. HYDRO & POWER AUTHORITY,  
8751- 124 TH STREET, SURREY.