

PLAN OF SUBDIVISION OF PART OF
 S. E. 1/4 OF DISTRICT LOT 4047
 CARIBOO DISTRICT, BRITISH COLUMBIA

SCALE: 1" = 100'

NOTE: Bearings are astronomic, derived from the South boundary of Lot R, Plan 17915.

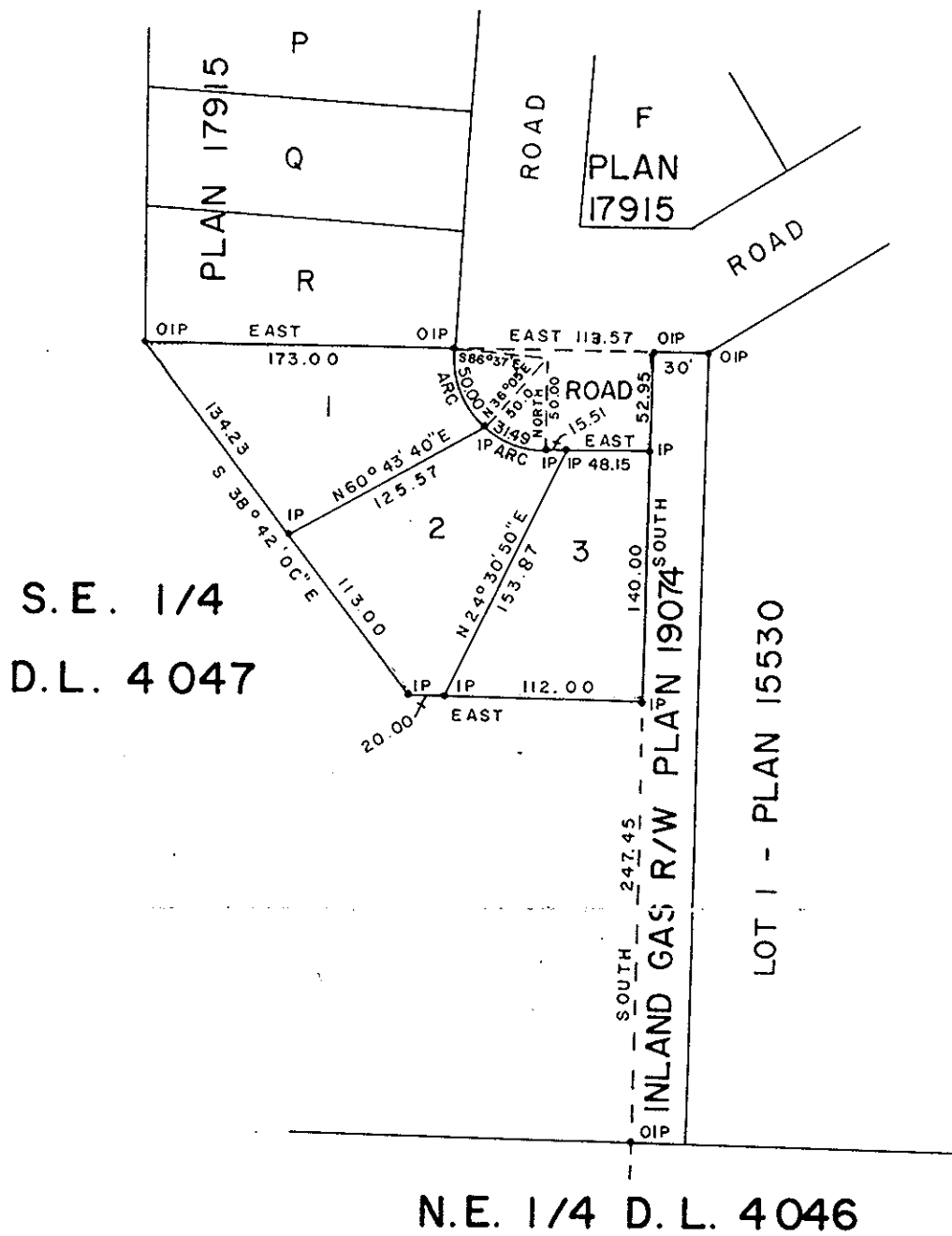
LEGEND: •OIP denotes an old iron pin found.
 •IP denotes an iron pin set.

PLAN N^o **20884**

Deposited in the Land Registry Office at Prince George, B.C. this 3 day of MAY, 1973.

•E.T. SCHOOLEY
 Registrar

Per: J. S. Finlay
 (SURVEYOR L.R.O.)



I, DONALD A. DUFFY of the City of Prince George, a British Columbia Land Surveyor, make oath and say that I was present at and did personally superintend the survey represented by this plan and that the survey and plan are correct. The said survey was completed on the 6th day of Nov., 1972.

BIRCHWOOD HOLDINGS LTD.

Approved under the Land Registry Act this 5th day of April, 1973

[Signature]
 B.C.L.S.

[Signature]
[Signature]

[Signature]
 Approving Officer, Dept. of Highways.

Sworn before me this 6 day of April, 1973

This plan lies within the Fraser-Fort George Regional District.

A Commissioner for taking Affidavits for British Columbia

W. D. USHER & ASSOCIATES
 LAND SURVEYORS
 PRINCE GEORGE - B.C.
 FP 20 4343