

PLAN of SUBDIVISION
of PART of CLOSED ROAD PLAN 19206
and LOTS 13 & 14 BLOCK 104, PLAN 752,
DISTRICT LOT 937
Cariboo District.

Scale : 1" = 100'

PLAN NO.: **20874**

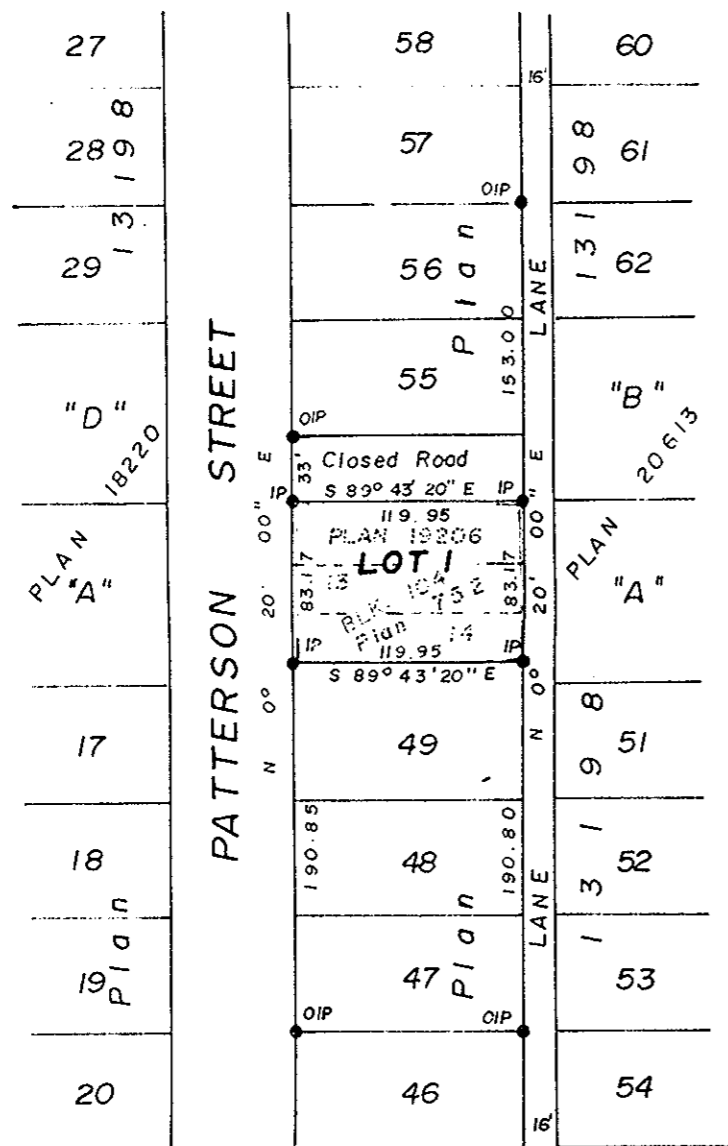
Deposited in the Land Registry Office at
Prince George on the 26. day of APRIL 1973.

RECEIVED

JUN 8 1973

CITY ASSESSOR
PRINCE GEORGE

E.T. SHOOLEY
Registrar
Per: *[Signature]*
(SURVEYOR L.R.O.)



This plan lies within the
FRASER - FORT GEORGE
Regional District.

The seal of the City of Prince George
was affixed hereto in the presence of

Mayor *[Signature]*

City Clerk *[Signature]*

Bearings are astronomic, derived from
OIPs on Easterly Bdy. of Patterson
Street, shown as N 0° 20' E on
Plan 13198.

● IP..... Standard Iron Post.
O..... Denoting "Old."

Approved under the Land Registry Act
on the 16th day of APRIL 1973.

[Signature]
Approving Officer - City Engineer
City of Prince George

I, D. KEOWN of the City of Prince George
British Columbia Land Surveyor, make oath
and say that I was present at and did personally
superintend the survey represented by this
plan and that the survey and plan are
correct.

The said survey was completed on
the 6 day of April 1973

[Signature]
D. Keown, B.C.L.S.

Sworn before me at Prince George
this 19th day of April 1973

A commissioner for taking affidavits
for British Columbia

Mc. WILLIAM, WHYTE, GOBLE & ASSOCIATES
B. C. LAND SURVEYORS
PRINCE GEORGE, KAMLOOPS, SMITHERS

REF. NO.: 73100-8