

PLAN OF SUBDIVISION OF
 LOTS 14 TO 18 INCLUSIVE,
 BLOCK 148, PLAN 1268
 DISTRICT LOT 343
 CARIBOO DISTRICT, BRITISH COLUMBIA

SCALE: 1" = 100'

NOTE: Bearings are astronomic, derived from the North boundary of Block 167, as shown on Plan DF 43238.

LEGEND: • OLP denotes an old lead plug found.
 • OIP denotes an old iron pin found.
 • IP denotes an iron pin set.

PLAN No **20857**

Deposited in the Land Registry Office at Prince George, B.C. this 16 day of APRIL, 1973.

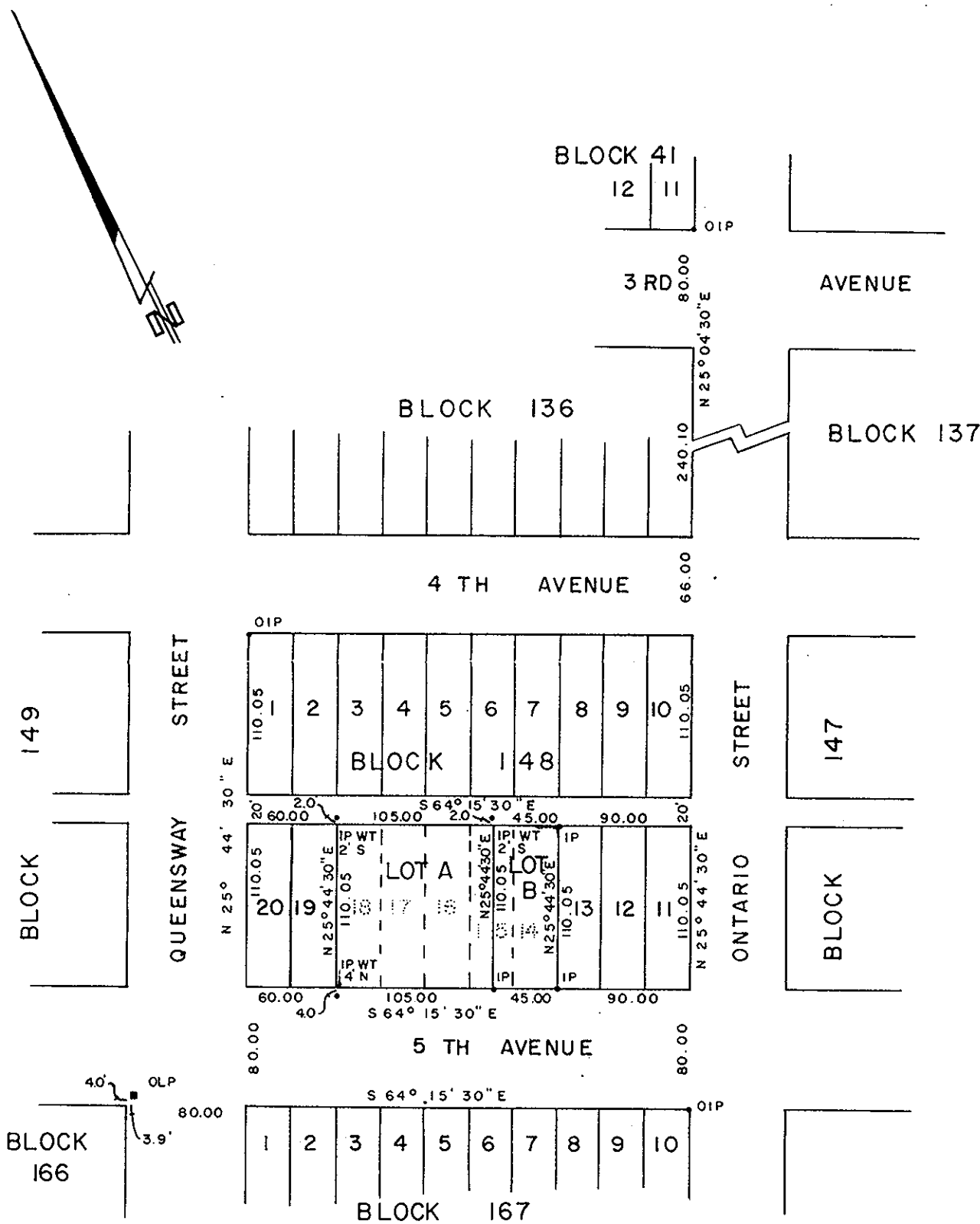
C.T. SCHOOLEY
 Registrar

Per: *J. Finlay*
 (SURVEYOR L.R.O.)

RECEIVED

JUN 8 1973

CITY ASSESSOR
 PRINCE GEORGE



REAPPROVED
 This 13th day of APRIL, 1973.

C. E. Olt.
 Approving Officer, City of Prince George

Approved under the Land Registry Act
 this 6th day of FEB, 1973

C. E. Olt.
 Approving Officer, City of Prince George

This plan lies within the Fraser-Fort George
 Regional District.

I, DONALD A. DUFFY of the City of Prince George, a British Columbia Land Surveyor, make oath and say that I was present at and did personally superintend the survey represented by this plan and that the survey and plan are correct. The said survey was completed on the 11th day of DEC, 1972.

Owner *Stephen Smith*

Witness *Don Duffy*

Sworn before me this 15th
 day of DEC, 1972

B.C.L.S.

A Commissioner for taking Affidavits
 for British Columbia.

W. D. USHER & ASSOCIATES
 LAND SURVEYORS
 PRINCE GEORGE - B.C.
 FF 43 4818