

PLAN OF SUBDIVISION OF PART OF  
DISTRICT LOT 7637  
CARIBOO DISTRICT, BRITISH COLUMBIA

SCALE: 1" = 300'

NOTE: Bearings are astronomic, derived from the North boundary of D.L. 7637 as shown on Plan 20383.

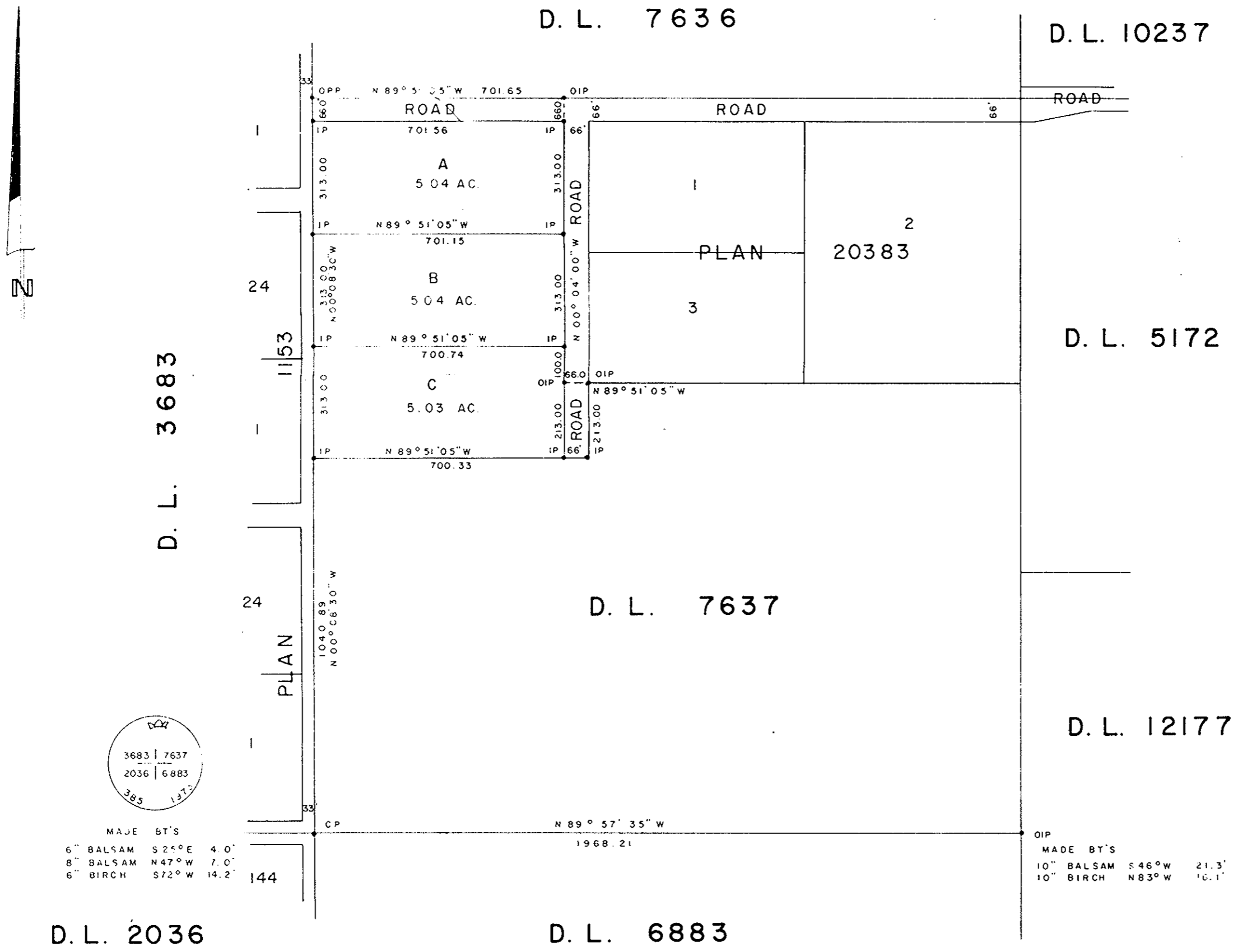
LEGEND: •CP denotes a capped iron pin set.  
•OPP denotes an old pipe post found.  
•OIP denotes an old iron pin found.  
•IP denotes an iron pin set.

PLAN N<sup>o</sup> 20810

Deposited in the Land Registry Office at Prince George, B.C. this 29th day of MARCH, 1973.

E. T. SCHOOLEY,  
Registrar

per: *J. Spink*  
(SURVEYOR L.R.O.)



MADE BY'S  
6" BALSAM S 25° E 4.0'  
8" BALSAM N 47° W 7.0'  
6" BIRCH S 72° W 14.2'

OIP  
MADE BY'S  
10" BALSAM S 46° W 21.3'  
10" BIRCH N 83° W 10.1'

DONALD A. DUFFY  
19TH JAN 1973

WESTRIDGE HEIGHTS ENTERPRISES LTD.

*Alton (Chairman) M. Pearson (Sec)*

HOMEPLAN REALTY LTD.  
*Jean ...*  
*...*

9 MARCH 73