

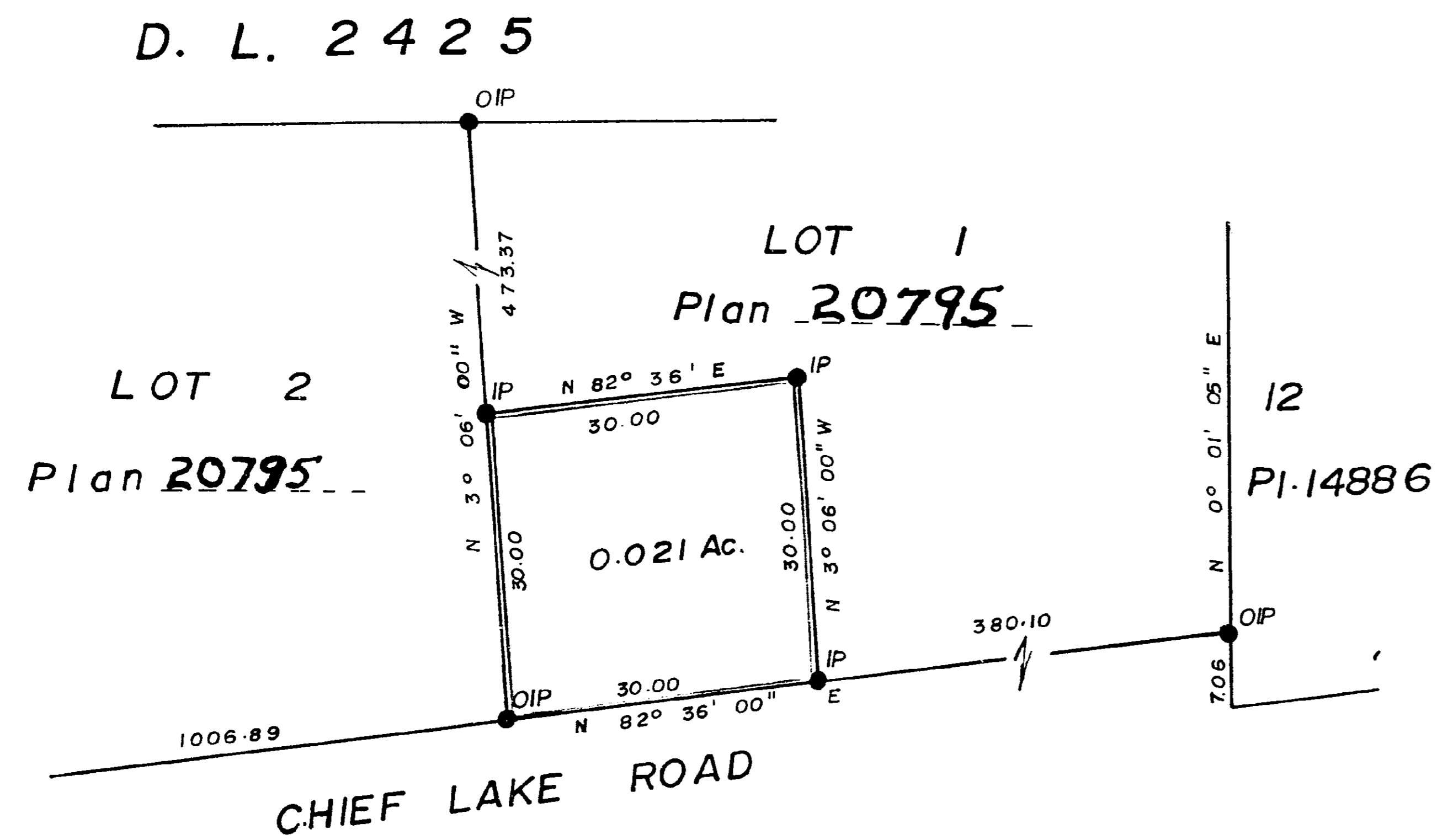
PLAN OF EASEMENT  
IN LOT 1, PLAN 20795  
DISTRICT LOT 2424  
CARIBOO DISTRICT

PLAN No 20796  
Deposited in the Land Registry Office at  
PRINCE GEORGE on the 20. day of MARCH 1973.

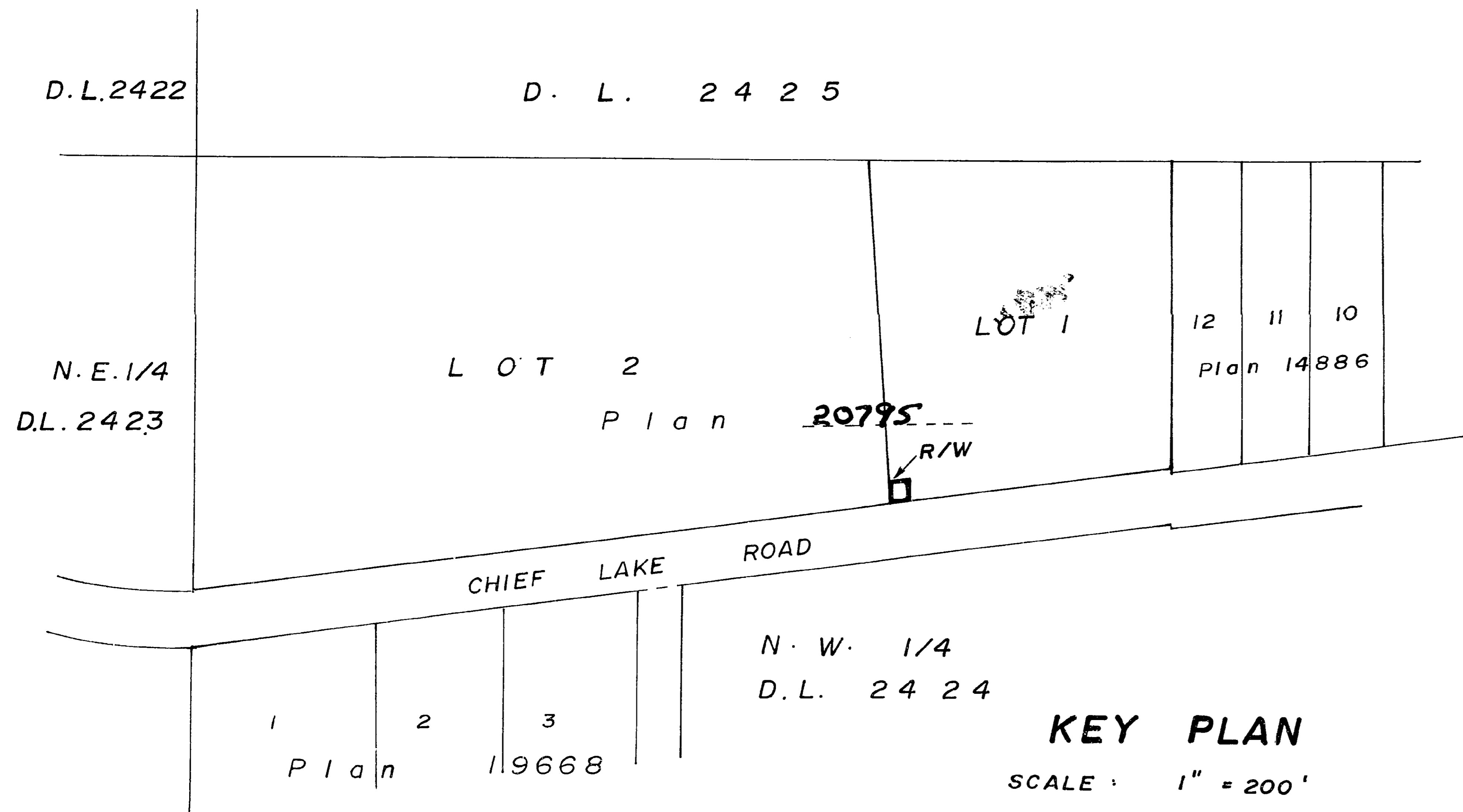
E.T. SCHOOLEY  
Registrar

per: J. Finlayson  
(SURVEYOR L.R.O.)

Scale: 1" = 20'



BOOK OF REFERENCE	
LOT 1, PLAN 20795	0.021 Ac.



Bearings are astronomic and are derived from South Boundary of Lot "A", Plan 18338 shown as N 82° 36' E

- P.con. .... Standard Concrete Post.
- P.Rock ..... Standard Rock Post.
- PP ..... Standard Pipe Post.
- I.P. .... Standard Iron Post.
- P. .... Wooden Post.
- L.P. .... Lead Plug.
- ..... Denoting "Old"
- WT. .... Denoting "Witness"
- CIP ..... Capped Iron Post

I, V. BARTELL of the CITY OF PRINCE GEORGE British Columbia Land Surveyor, make oath and say that I was present at and did personally superintend the survey represented by this plan and that the survey and plan are correct. The said survey was completed on the 13. day of November 1972.

*Victor Bartell*  
V. BARTELL B.C.L.S.

Sworn before me at PRINCE GEORGE this 16. day of November 1972.

*J. Wilson*  
A commissioner for taking affidavits for British Columbia.

Approved under the Land Registry Act on the 12. day of MARCH 1973.

*J. Finlayson*  
Approving Officer  
DEP. OF HIGHWAYS

This plan lies within the FRASER FORT GEORGE Regional District.

McWilliam—Whyte—Goble & Associates  
B.C. LAND SURVEYORS  
PRINCE GEORGE | SMITHERS | KAMLOOPS  
REF No: 68260-2