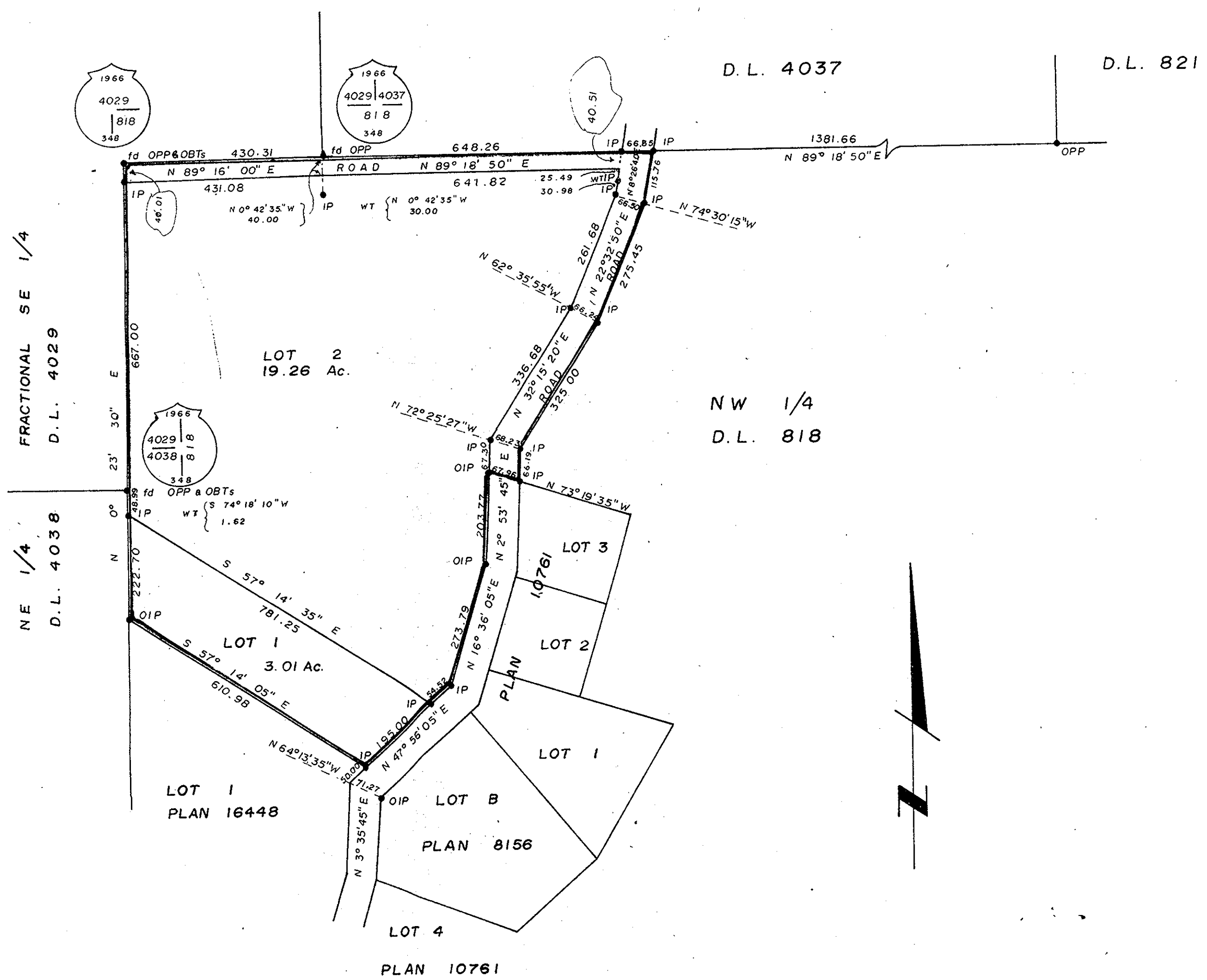


**PLAN No 20783**  
 Deposited in the Land Registry Office at  
 Prince George on the 6<sup>th</sup> day of March, 1973.

*E. G. Healey*  
 Registrar. *per Jpr*

PLAN OF SUBDIVISION  
 OF PART OF NW 1/4  
 D.L. 818 CARIBOO DISTRICT  
 SCALE: 1" = 200'



- Bearings are astronomic and are derived from North bdy D.L. 818 shown as N 89° 16' 00" E in Plan 16448
- P.con. .... Standard Concrete Post.
  - P.Rock .... Standard Rock Post.
  - PP .... Standard Pipe Post.
  - I.P. .... Standard Iron Post.
  - P. .... Wooden Post.
  - L.P. .... Lead Plug.
  - O .... Denoting "Old"
  - WT. .... Denoting "Witness"
  - CIP .... Capped Iron Post

I, Dale Keown... of the City of Prince George British Columbia Land Surveyor, make oath and say that I was present at and did personally superintend the survey represented by this plan and that the survey and plan are correct. The said survey was completed on the... day of December 192...

*Dale Keown*  
 DALE KEOWN B.C.L.S.

Sworn before me at... Prince George... this 18<sup>th</sup> day of December, 1972.

*[Signature]*  
 A Commissioner for taking affidavits for British Columbia.

Owner *K. M. [Signature]*

Witness *[Signature]*

Approved under the Land Registry Act on the 5<sup>th</sup> day of FEBRUARY, 1973.

*[Signature]*  
 Approving Officer

This plan lies within the Fraser... Fort... George... Regional District.

McWilliam—Whyte—Goble & Associates  
 B.C. LAND SURVEYORS  
 PRINCE GEORGE | SMITHERS | KAMLOOPS  
 REF No: 72221