

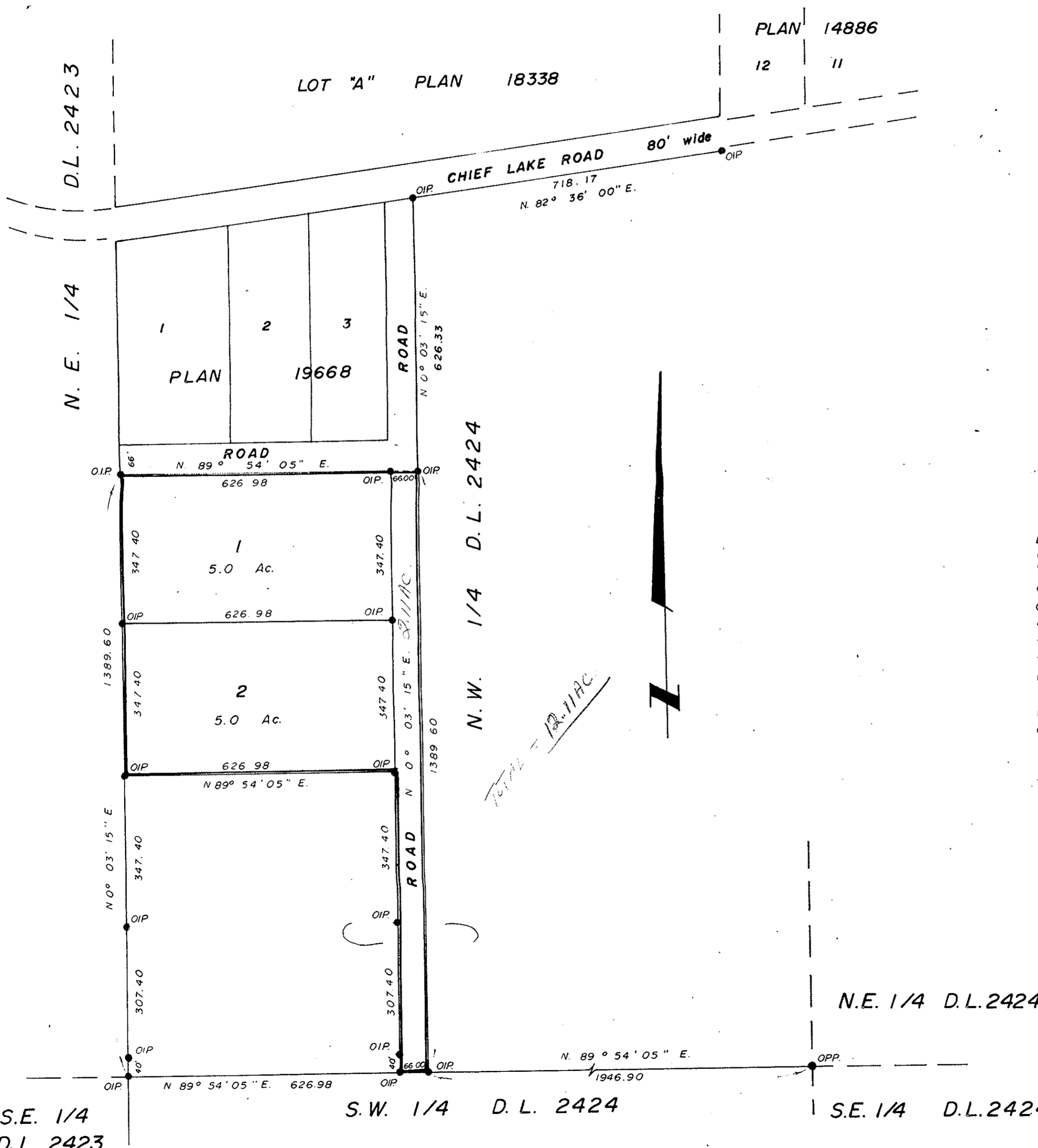
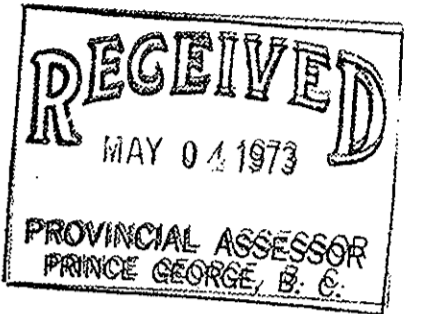
WMB
14/4/73

2228/050
055

PLAN OF SUBDIVISION OF
PART OF THE N.W. 1/4
DISTRICT LOT 2424, CARIBOO DISTRICT.
SCALE: 1" = 200'

PLAN No 20767
Deposited in the Land Registry Office at
Prince George on the 27th day of FEBRUARY, 1973.

E.T. SCHOOLEY
Registrar



- Bearings are astronomic and are derived from OIPs on South Bdy. of Chief Lake Road shown as N. 82° 36' 00" E. on Plan 19668
- ⊙ P.con. Standard Concrete Post.
 - ⊙ P.Rock Standard Rock Post.
 - P.P. Standard Pipe Post.
 - I.P. Standard Iron Post.
 - P. Wooden Post.
 - L.P. Lead Plug.
 - Denoting "Old"
 - WT. Denoting "Witness"
 - ⊙ CIP. Capped Iron Post

I, A. Daniluck... of the City of Prince George, British Columbia Land Surveyor, make oath and say that I was present at and did personally superintend the survey represented by this plan and that the survey and plan are correct. The said survey was completed on the 29th day of May, 1972.

Sworn before me at Prince George, B.C., this 22nd day of May, 1972.

Approved under the Land Registry Act on the 23rd day of FEBRUARY 1973.
[Signature]
Approving Officer

A commissioner for taking affidavits for British Columbia.

Owner *Ted Douglas*
Witness *R.W. Spaldman*

This plan lies within the Fraser, Fort - George Regional District.

McWilliam-Whyte-Goble & Associates
B.C. LAND SURVEYORS
PRINCE GEORGE | SMITHERS | KAMLOOPS
REF N: 72131