

W. J. Schaefer
 Registrar

PLAN OF SUBDIVISION OF
 S. E. 1/4 OF DISTRICT LOT 2426
 CARIBOO DISTRICT, BRITISH COLUMBIA

SCALE: 1" = 200'

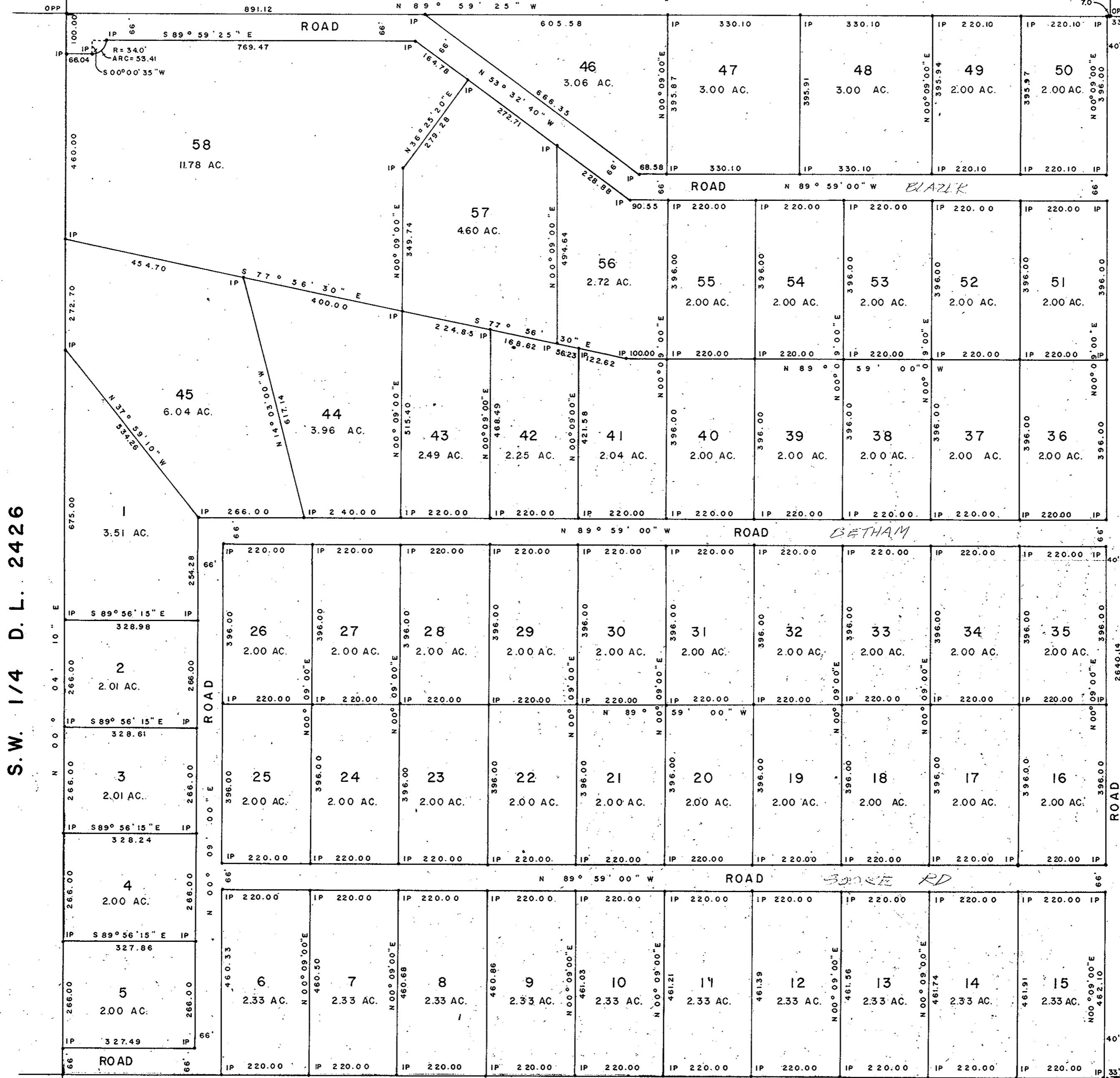
NOTE: Bearings are astronomic, derived from the South boundary of S. E. 1/4 D. L. 2426, as shown on Plan 17443.

LEGEND: *OPP denotes an old pipe post found.
 *OIP denotes an old iron pin found.
 *IP denotes an iron pin set.

S.W. 1/4
 D.L. 2427

LOT A PLAN 17819
 N. E. 1/4 D. L. 2426

N. W. 1/4
 D. L. 2431



S. W. 1/4 D. L. 2426

S. W. 1/4 D. L. 2431

PLAN 13794

LOT 4
 PLAN 17413
 D. L. 2425

N. W. 1/4
 D. L. 2432

I, DONALD A. DUFFY of the City of Prince George, a British Columbia Land Surveyor, make oath and say that I was present at and did personally superintend the survey represented by this plan and that the survey and plan are correct. The said survey was completed on the 21 day of DEC., 1972.

Donald A. Duffy
 B.C.L.S.

Sworn before me this 21 day of FEB., 1973

E. Manton
 A Commissioner for Taking Affidavits for British Columbia.

GLENVIEW ESTATES LTD.

Colman S. Ganger
Patricia Ganger

MORTGAGEE *Walter Lee*

WITNESS *Walter Lee*

Approved under the Land Registry Act this 30 day of JANUARY, 1973.

W. J. Schaefer
 Approving Officer, Dept. of Highways

This plan lies within the Fraser-Fort George Regional District.