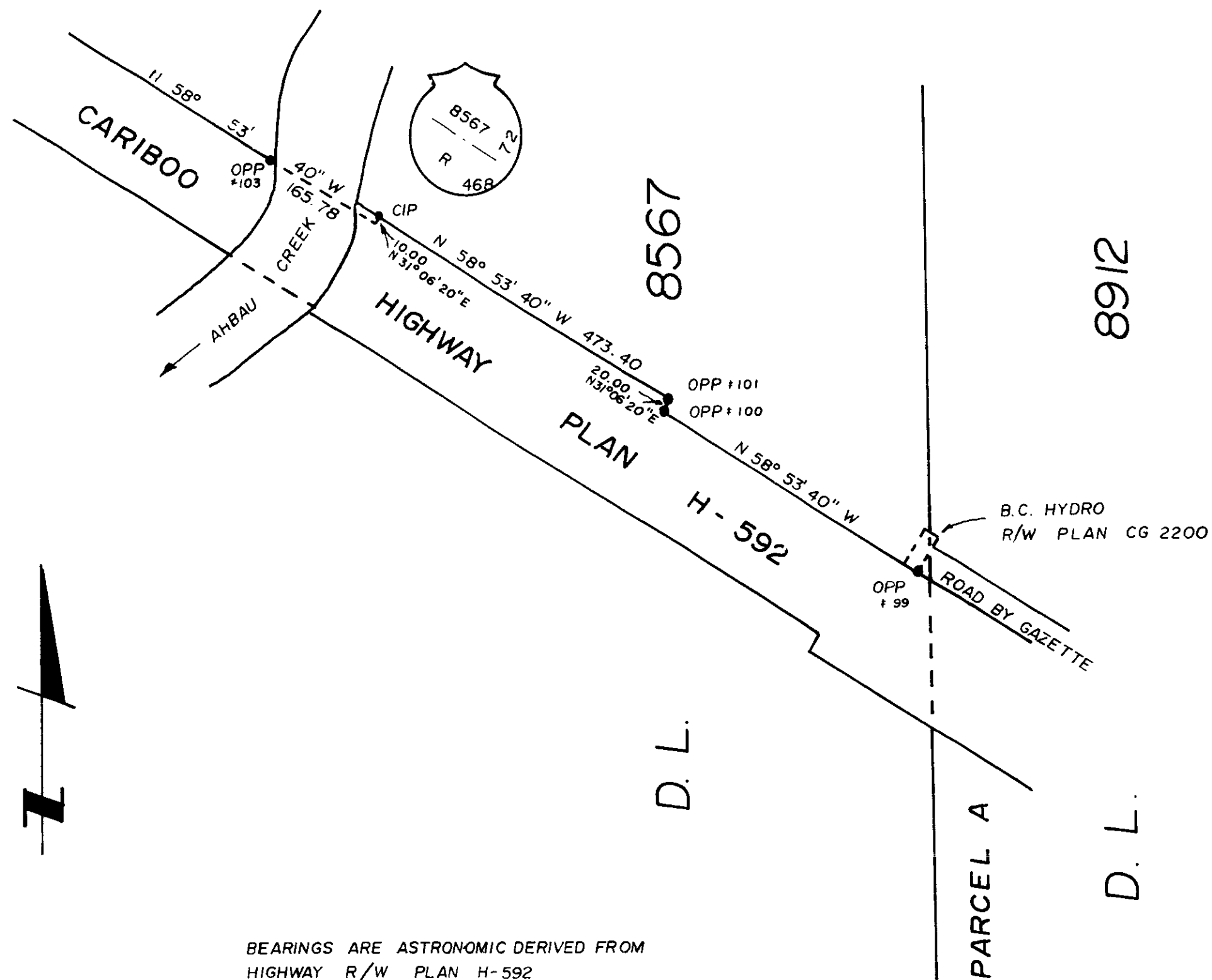


POSTING PLAN OF MONUMENT No.102
 SHOWN ON HIGHWAY RIGHT-OF-WAY PLAN H-592
 WITHIN D.L. 8567, CARIBOO DISTRICT.

SCALE: 1" = 200'

PLAN No 20710

DEPOSITED IN THE LAND REGISTRY
 OFFICE AT PRINCE GEORGE.
 ON THE 8. DAY OF FEBRUARY 1973.



BEARINGS ARE ASTRONOMIC DERIVED FROM
 HIGHWAY R/W PLAN H-592

- PP_ --- STANDARD PIPE POST
- CIP_ --- CAPPED IRON POST
- O --- DENOTING "OLD"

THIS PLAN LIES WITHIN THE
 CARIBOO REGIONAL DISTRICT.

CERTIFIED CORRECT
 THIS 18 DAY OF DECEMBER 1972

Dale Keown
 DALE KEOWN B.C.L.S.

McWILLIAM-WHYTE-GOBLE-ASSOCIATES
 B.C. LAND SURVEYORS
 PRINCE GEORGE-SMITHERS-KAMLOOPS

REF No 72358 - J