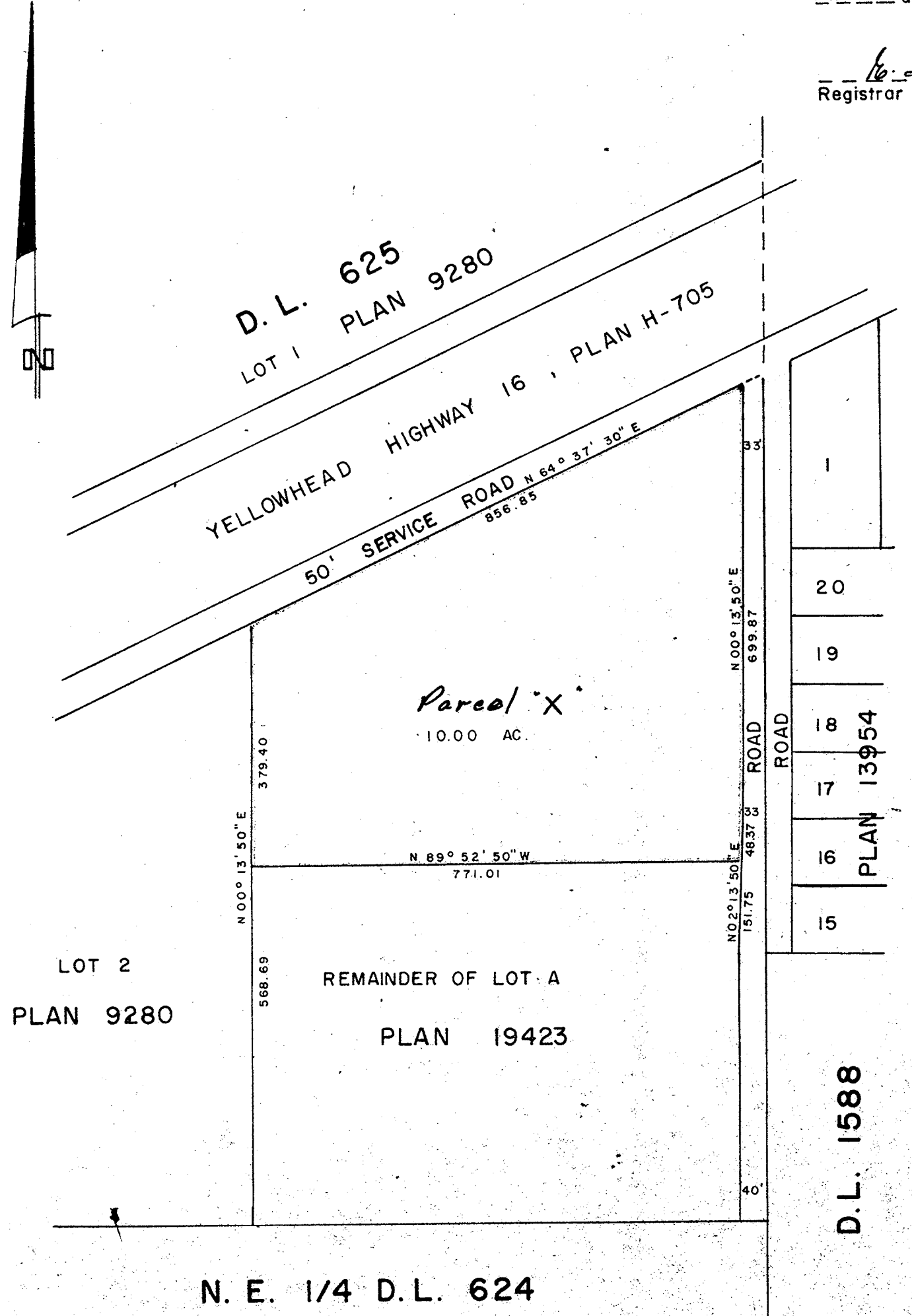


EXPLANATORY PLAN OF PART OF  
 LOT A, PLAN 19423  
**DISTRICT LOT 625**  
 CARIBOO DISTRICT, BRITISH COLUMBIA

SCALE: 1" = 200'

PLAN No. **20675**  
 Deposited in the Land Registry  
 Office at Prince George, B.C. this  
 17th day of January, 1973

*W. J. Duffy*  
 Registrar



|    |
|----|
| 1  |
| 20 |
| 19 |
| 18 |
| 17 |
| 16 |
| 15 |

D.L. 1588

Approved under the Land Registry Act  
 this 17 day of JANUARY, 1973

*W. J. Duffy*  
 Approving Officer, Dept. of Highways

This plan lies within the Fraser-Fort George  
 Regional District.

CERTIFIED CORRECT  
 According to information shown on  
 Plan 19423, this 17th day of  
 October, 1972.  
*W. J. Duffy*  
 D.A. DUFFY, B.C.L.S.

W.D. USHER & ASSOCIATES  
 LAND SURVEYORS  
 PRINCE GEORGE — B.C.