

**EXPLANATORY PLAN OF RIGHT OF WAY OVER
A PORTION OF LOTS 1 AND 2, DISTRICT LOT 2101,
CARIBOO DISTRICT, PLAN 19954.**

Scale: - 1 inch = 100 feet.
Bearings are astronomic, derived from Plan 19954

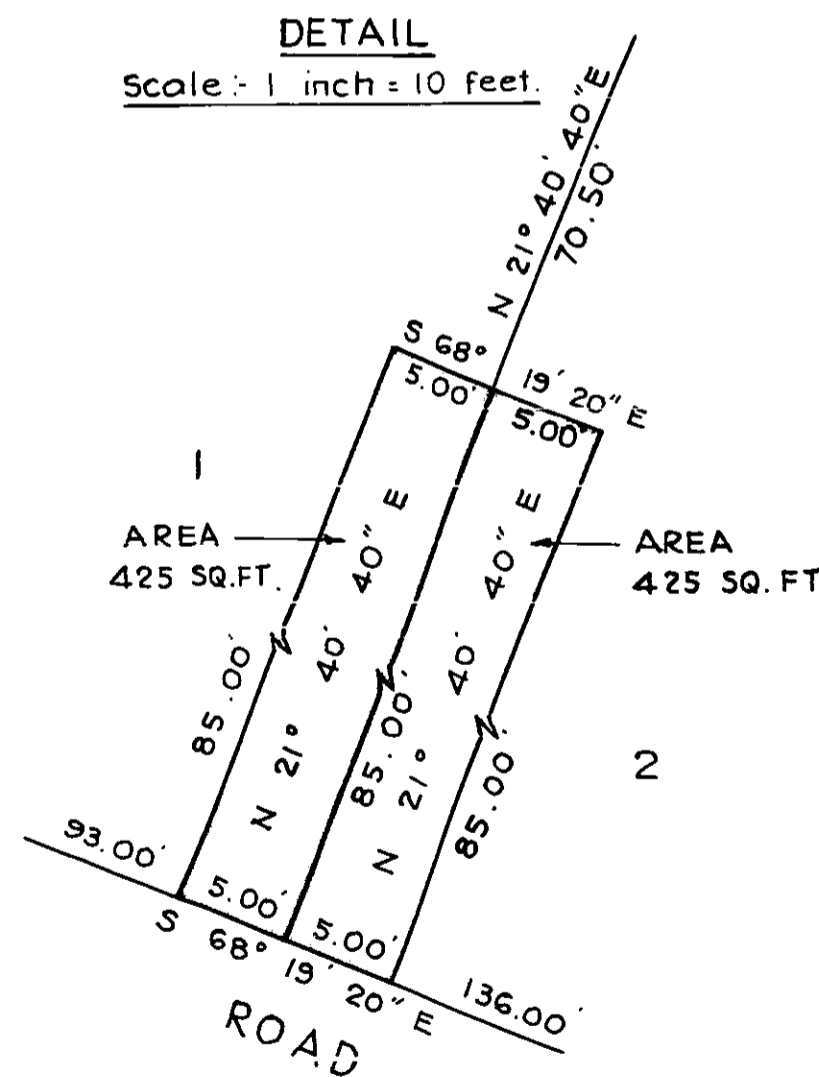
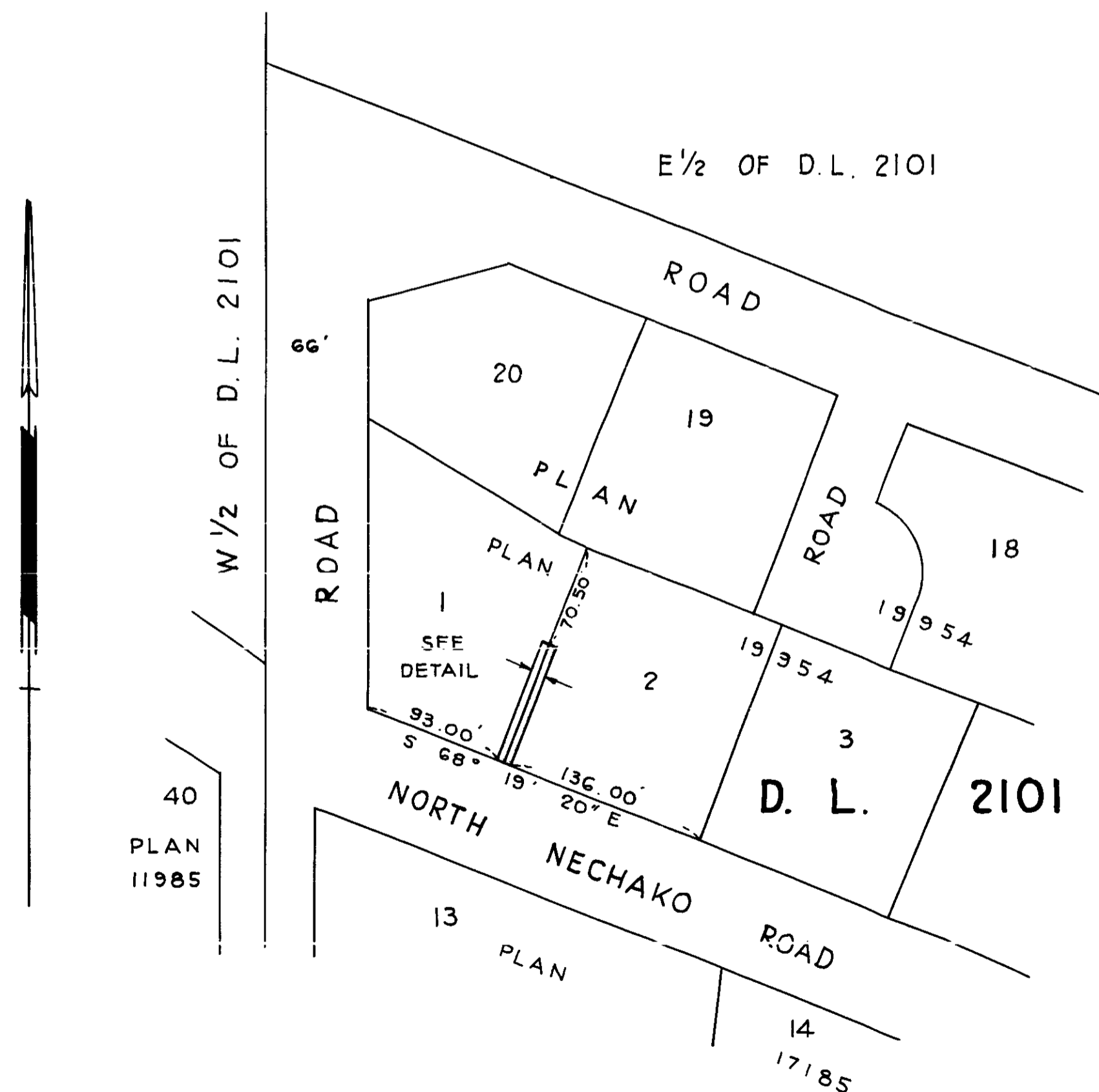
DEPOSITED UNDER SECTION
117 OF THE LAND REGISTRY ACT.

PLAN 20660

Deposited in the Land Registry
Office at Prince George, B.C.
This 26. day of JANUARY, 1973

per: *[Signature]*
E.T. SHODLEY (SURVEYOR L.R.O.)
Registrar

Pursuant to section 118h(i)



BOOK OF REFERENCE.	
DESCRIPTION	AREA
LOT 1, D.L. 2101 CARIBOO DISTRICT, PLAN 19954	425 SQ. FT.
LOT 2, D.L. 2101, CARIBOO DISTRICT, PLAN 19954	425 SQ. FT.

Certified correct according to
Land Registry Office Records.
This 26th day of January, 1973.

Colin W. Bracey B.C.L.S.