

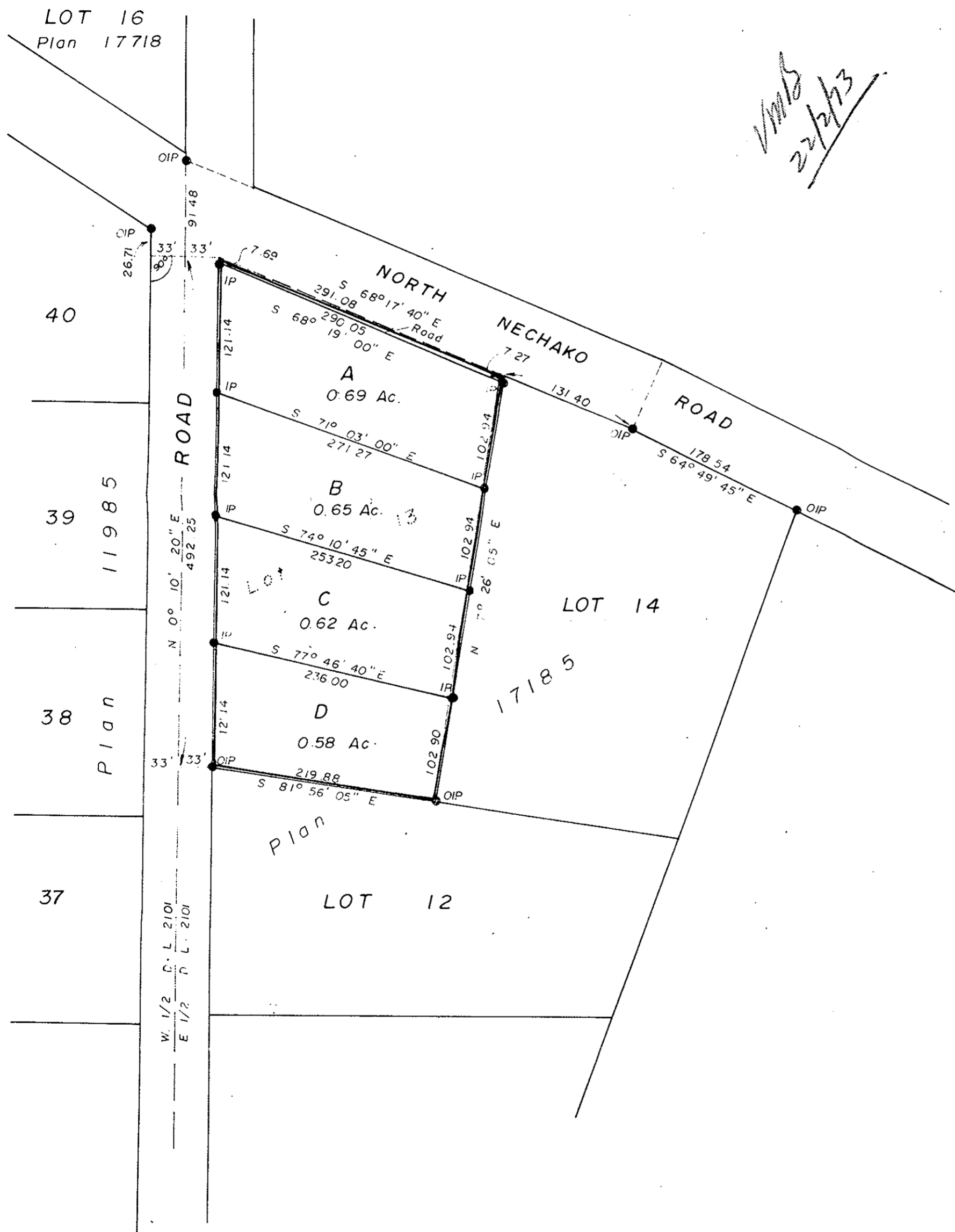
20185.505-  
520  
PLAN OF SUBDIVISION  
OF LOT 13, PLAN 17185  
E. 1/2 D.L. 2101  
CARIBOO DISTRICT

Scale: 1" = 100'

PLAN No 20609  
Deposited in the Land Registry Office at  
PRINCE GEORGE on the 15<sup>th</sup> day of January 1973.

*C. J. Schaeley*  
Registrar  
*R. J. J.*

RECEIVED  
FEB 14 1973  
PROVINCIAL ASSESSOR  
PRINCE GEORGE, B. C.



- Bearings are astronomic and are derived from west Boundary Lot 13, Plan 17185, shown as N 0° 10' 20" E
- P.con. .... Standard Concrete Post.
  - P.Rock .... Standard Rock Post.
  - PP .... Standard Pipe Post.
  - I.P. .... Standard Iron Post
  - P. .... Wooden Post
  - L.P. .... Lead Plug.
  - .... Denoting "Old"
  - WT. .... Denoting "Witness"
  - CIP .... Capped Iron Post

Approved under the Land Registry Act  
on the 11<sup>th</sup> day of December 1972

*W. J. J.*  
Approving Officer  
Dep. of Highways

This plan lies within the FRASER  
FORT GEORGE Regional District.

I, V. BARTELL, of the City of Prince George, British Columbia Land Surveyor, make oath and say that I was present at and did personally superintend the survey represented by this plan and that the survey and plan are correct. The said survey was completed on the 28<sup>th</sup> day of November, 1972.

*V. Bartell*  
V. BARTELL, B.C.L.S.

Sworn before me at Prince George, this 13<sup>th</sup> day of December 1972.

*G. Wilson*  
A Commissioner for taking affidavits  
for British Columbia.

Owner *B. Johnson*

Witness *E. Whyte*

McWilliam—Whyte—Goble & Associates  
B.C. LAND SURVEYORS  
PRINCE GEORGE | SMITHERS | KAMLOOPS  
REF No: 72350