

33205.101-
.148

PLAN OF SUBDIVISION OF REMAINDER OF
S.E. 1/4 OF N.E. 1/4 OF
DISTRICT LOT 4048
CARIBOO DISTRICT, BRITISH COLUMBIA

SCALE: 1" = 100'

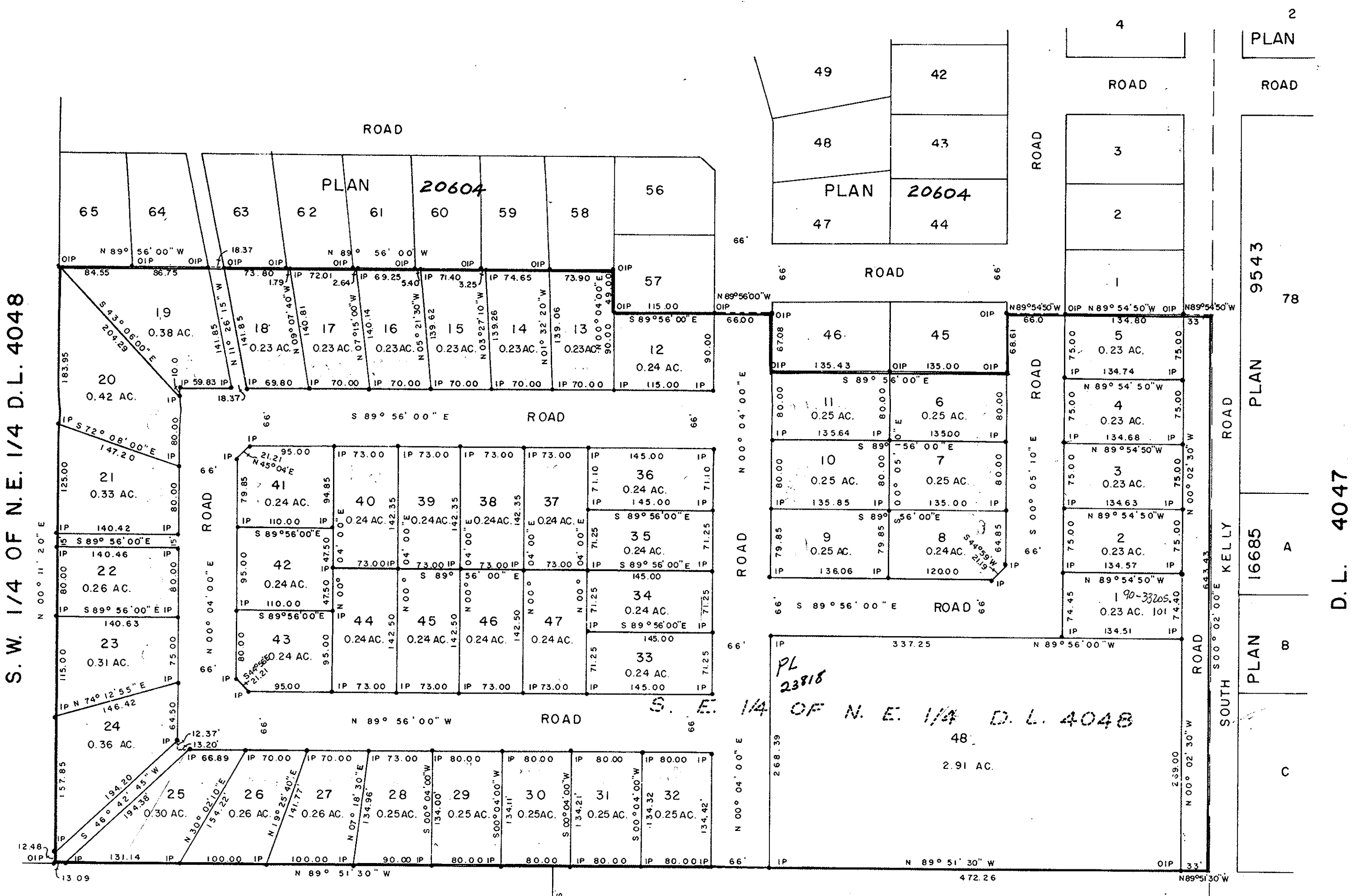
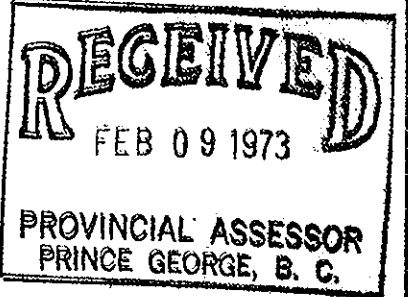
NOTE: Bearings are astronomic, derived from the South boundary
of the S.E. 1/4 D.L. 4048, as shown on Plan 20604

LEGEND: • OIP denotes an old iron pin found.
• IP denotes an iron pin set.

PLAN No 20605

Deposited in the Land Registry
Office of Prince George, B.C. this
11. day of JANUARY, 1973.

E.T. SCHOOLEY
Registrar



S.W. 1/4 OF N.E. 1/4 D.L. 4048

E. 1/2 OF S.E. 1/4 D.L. 4048

LOT A PLAN 16896

E. 1/2 OF
S.E. 1/4
D.L. 4048

26
PLAN
9543

I, DONALD A. DUFFY of the City of Prince George,
a British Columbia Land Surveyor, make oath and say
that I was present at and did personally superintend
the survey represented by this plan and that the survey
and plan are correct. The said survey was completed
on the 25 day of SEPT. 1972

MORTGAGEE
ROYAL BANK OF CANADA
BY THEIR ATTORNEYS

WILLIAM HARRISON POOK
RICHARD HARRISON POOK

GLENVIEW ESTATES LTD.

President

Approved under the Land Registry Act
this 15. day of DECEMBER 1972.

Approving Officer, Dept. of Highways.

Sworn before me this 19.
day of DEC. 1972

A Commissioner for taking Affidavits
for British Columbia.

This plan lies within the Fraser-Fort George
Regional District.

W.D. FISHER & ASSOCIATES
LAND SURVEYORS
PRINCE GEORGE - B.C.