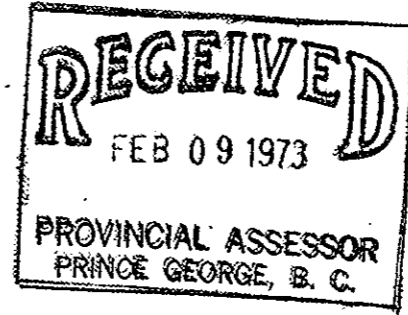


PLAN OF SUBDIVISION OF PARTS OF
LOT 8, PLAN 8970 AND
S.E. 1/4 OF THE N.E. 1/4 OF
DISTRICT LOT 4048
CARIBOO DISTRICT, BRITISH COLUMBIA

33205.001-
.065



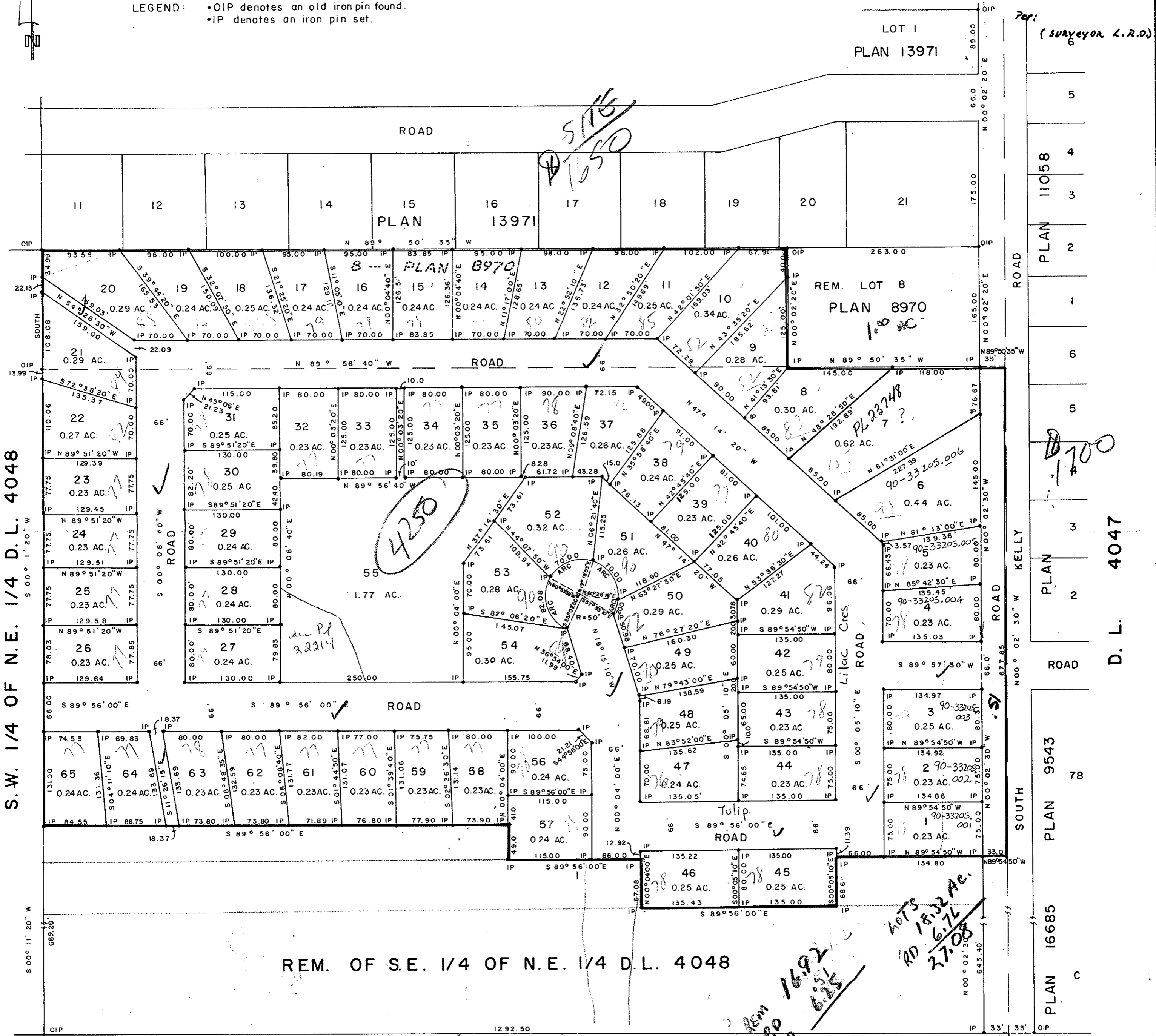
PLAN No 20604
Deposited in the Land Registry
Office at Prince George, B.C. this
11th day of JANUARY, 1973.

E.T. SCHOOLEY
Registrar

SCALE: 1" = 100'

NOTE: Bearings are astronomic, derived from the East boundary
of Lots 1 to 8, as shown on Plan 8970.

LEGEND: •OIP denotes an old iron pin found.
•IP denotes an iron pin set.



S.W. 1/4 OF N.E. 1/4 D.L. 4048

D.L. 4047

REM. OF S.E. 1/4 OF N.E. 1/4 D.L. 4048

I, DONALD A. DUFFY of the City of Prince George, a British Columbia Land Surveyor, make oath and say that I was present at and did personally superintend the survey represented by this plan and that the survey and plan are correct. The said survey was completed on the 25 day of Sept, 1972.

Approved under the Land Registry Act this 15 day of DECEMBER, 1972.

Sworn before me this 19 day of DEC, 1972.
A Commissioner for taking Affidavits for British Columbia.

MORTGAGEE
ROYAL BANK OF CANADA
BY THEIR ATTORNEYS
WILLIAM RALPH CUNNINGHAM
RICHARD HARRISON POOK

GLENVIEW ESTATES LTD.
President

Approving Officer, Dept. of Highways.

This plan lies within the Fraser-Fort George Regional District.

W. D. USHER & ASSOCIATES
LAND SURVEYORS
PRINCE GEORGE - B.C.
EK
FN
3468