

PLAN OF SUBDIVISION OF PART OF
DISTRICT LOT 10238
 CARIBOO DISTRICT, BRITISH COLUMBIA

SCALE: 1" = 200'

NOTE: Bearings are astronomic, derived from the South boundary of Lot 1, Plan 20358.

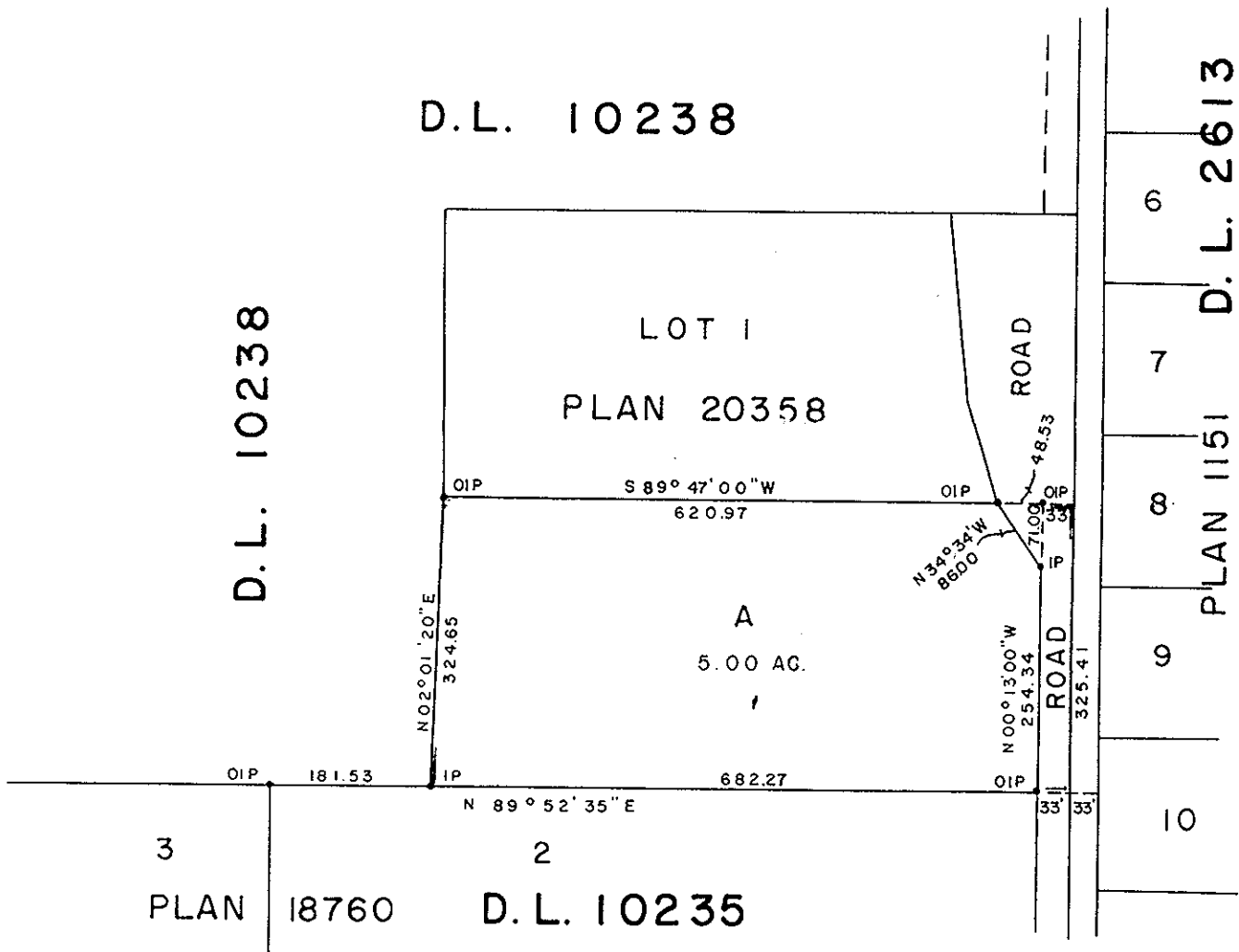
LEGEND: • OIP denotes an old iron pin found.
 • IP denotes an iron pinset.

PLAN N^o **20594**

Deposited in the Land Registry Office at Prince George, B.C. this 5 day of JANUARY, 1973.

> **E.T. SCHOOLEY**
 Registrar

Per: *J. S. Finstade*
 (SURVEYOR L.R.O.)



I, DONALD A. DUFFY of the City of Prince George, a British Columbia Land Surveyor, make oath and say that I was present at and did personally superintend the survey represented by this plan and that the survey and plan are correct. The said survey was completed on the 30th day of October 1972.

[Signature]
 B.C.L.S.

Sworn before me this 30 day of JAN, 1973

A Commissioner for taking Affidavits for British Columbia.

Owner *[Signature]*
 Witness *[Signature]*

Approved under the Land Registry Act this 2nd day of January, 1973
[Signature]
 Approving Officer, Dept. of Highways.

This plan lies within the Fraser-Fort George Regional District.