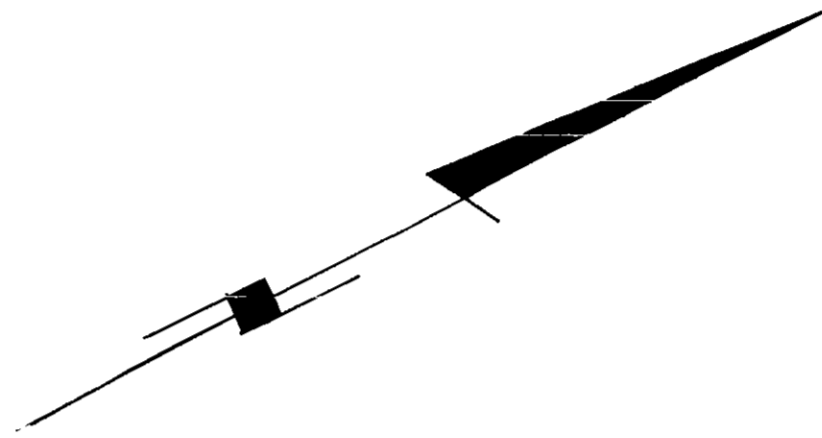


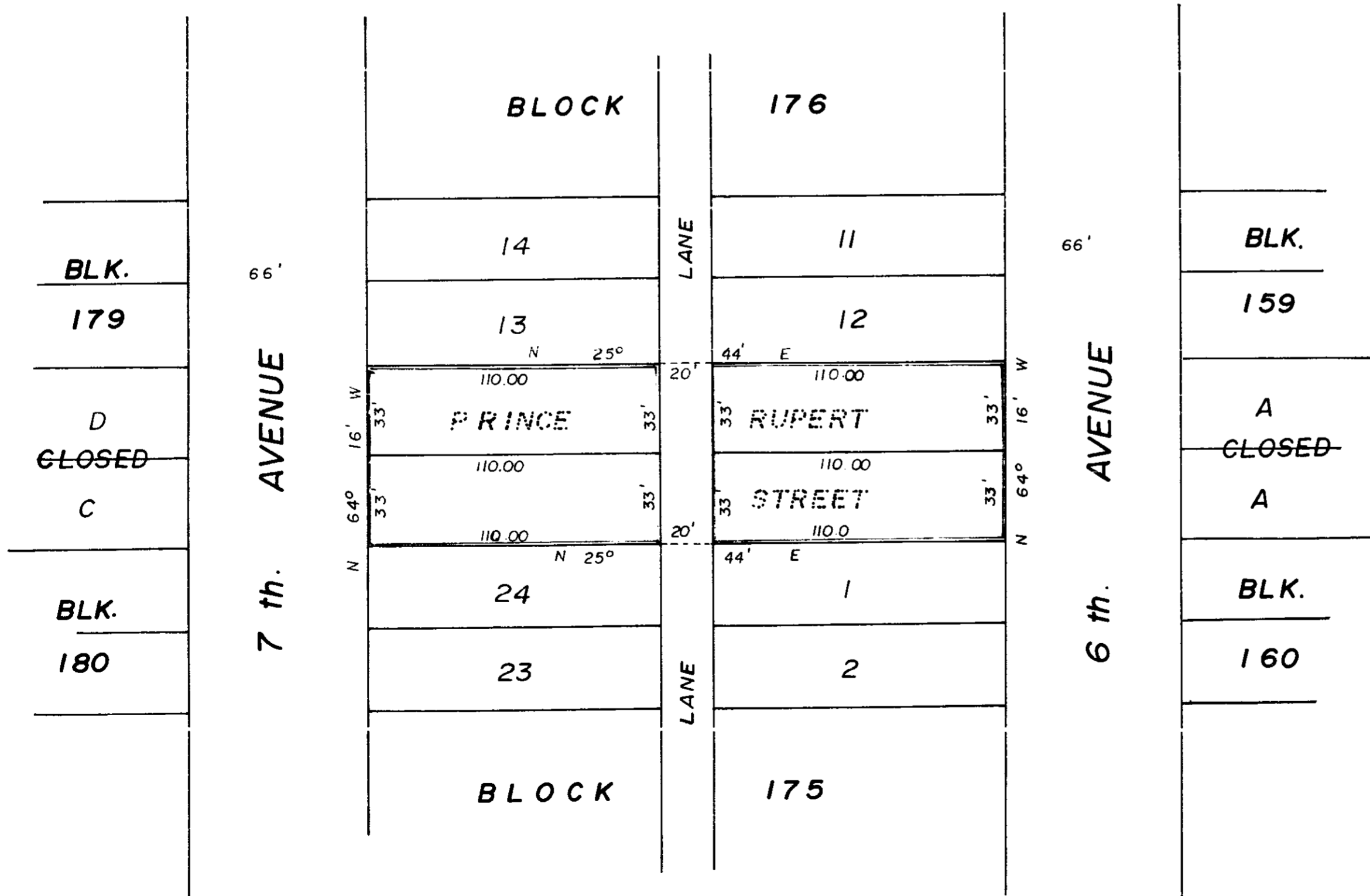
PLAN TO ACCOMPANY BY-LAW 2464  
 CITY OF PRINCE GEORGE  
 CLOSING PART OF PRINCE RUPERT STREET  
 ADJOINING LOTS 12 & 13 , BLOCK 176 and  
 LOTS 1 & 24 , BLOCK 175 , PLAN 1268  
 D. L. 343 , CARIBOO DISTRICT

Scale : 1" = 50'



PLAN NO. : 20591  
 Deposited in the Land Registry Office at  
 Prince George on the 4 day of Jan 1973

REGISTRAR. E. L. Schaefer  
Pw J



CERTIFIED CORRECT  
 According to Land Registry Office Records  
 This 22nd. day of November 1972

V. Bartell  
 V. BARTELL, B.C.L.S.

This plan lies within the Fraser - Fort - George  
 Regional District.

Mc. WILLIAM, WHYTE, GOBLE & ASSOCIATES  
 B. L. LAND SURVEYORS  
 PRINCE GEORGE - KAMLOOPS - SMITHERS

REF. NO. : 72100-20