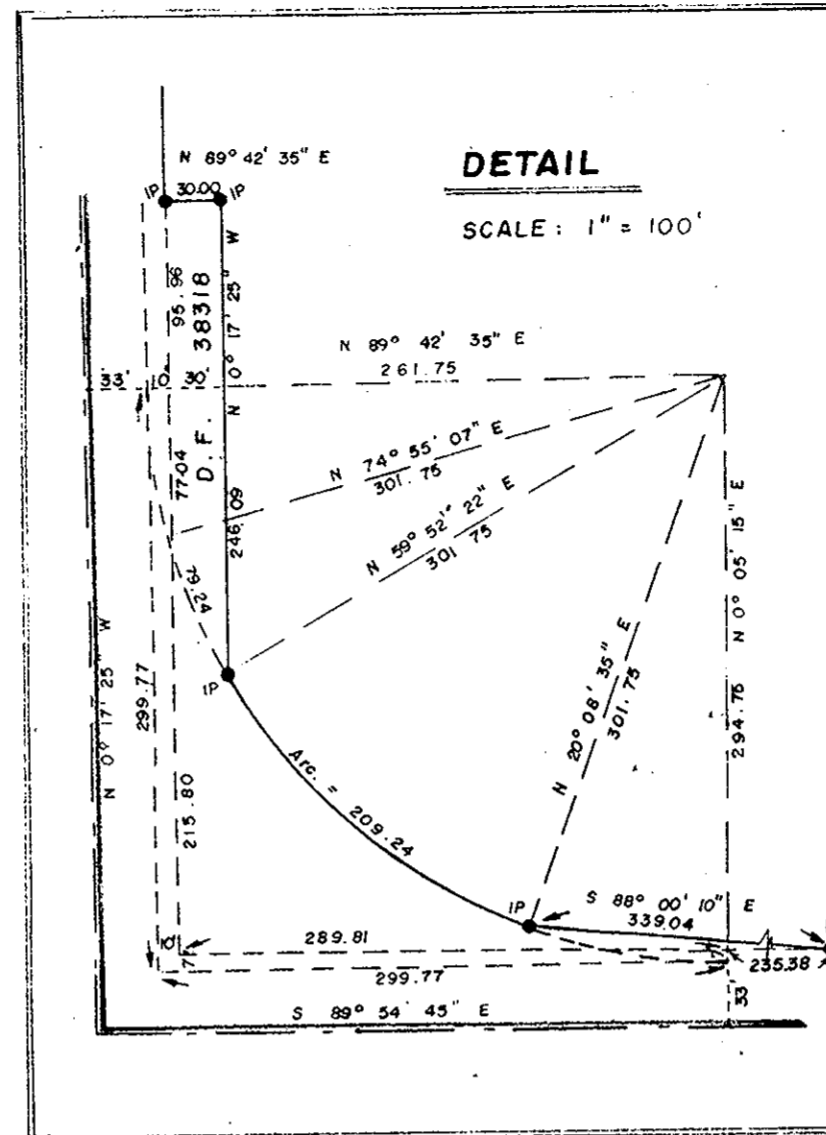


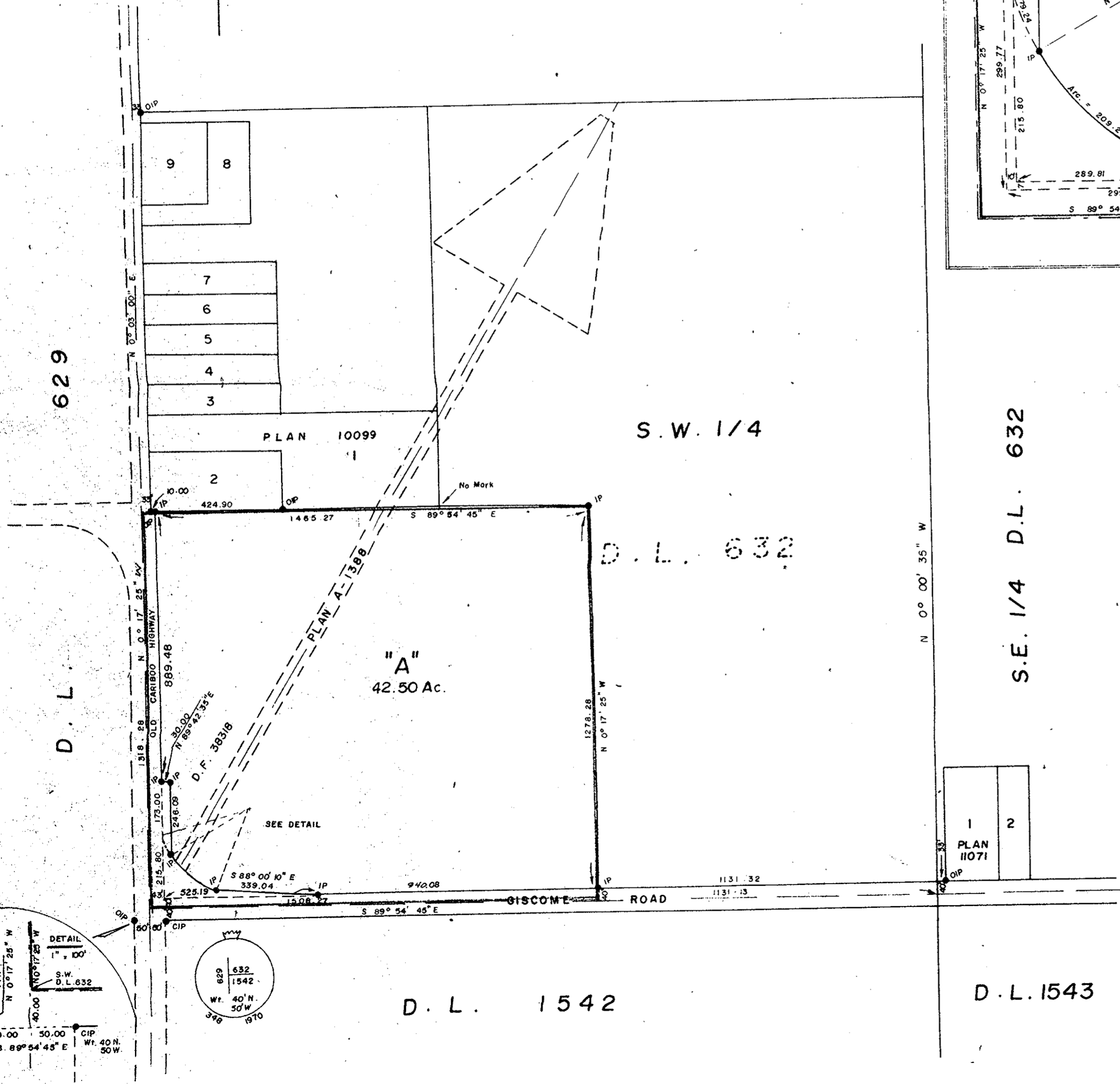
PLAN OF SUBDIVISION
OF PART OF S.W. 1/4,
DISTRICT LOT 632,
CARIBOO DISTRICT

SCALE: 1" = 300'



PLAN No 20590
Deposited in the Land Registry Office
at Kamloops on the 4th day of January 1972

V. Bartell
Registrar



- Bearings are astronomic and are derived from OIPs. along west bdy. D.L. 632 shown as N 0° 03' 00" E on Plan 11071
- ⊙ Rcon. Standard Concrete Post.
 - ⊙ P.Rock Standard Rock Post.
 - PP Standard Pipe Post.
 - IP Standard Iron Post.
 - P Wooden Post.
 - L.P. Lead Plug.
 - Denoting "Old"
 - WT. Denoting "Witness"

I, V. BARTELL of the City of Prince George, British Columbia Land Surveyor, make oath and say that I was present at and did personally superintend the survey represented by this plan and that the survey and plan are correct. The said survey was completed on the 7th day of October, 1970.

V. Bartell
B.C.L.S.

Sworn before me at Prince George this 8th day of October, 1970.

Lucie L. Lison
A commissioner for taking affidavits for British Columbia.

Owner *Albert Bartell*

Witness *Robert B. Carter*
Notary Public

Approved under the Land Registry Act on the 9th day of December 1972
W. J. Whyte
Approving Officer

THIS PLAN LIES WITHIN THE FRASER FORT GEORGE REGIONAL DISTRICT.

REAPPROVED:
W. J. Whyte
DECEMBER 29, 1972.

McWilliam-Whyte-Gable & Associates
B.C. LAND SURVEYORS
PRINCE GEORGE — KAMLOOPS
REF No: 70106