

EXPLANATORY PLAN OF PART OF
S. E. 1/4 DISTRICT LOT 2422
 CARIBOO DISTRICT - BRITISH COLUMBIA

SCALE : 1" = 200'

Bearings are astronomic, derived from Plan 16198.

PLAN No **20588**

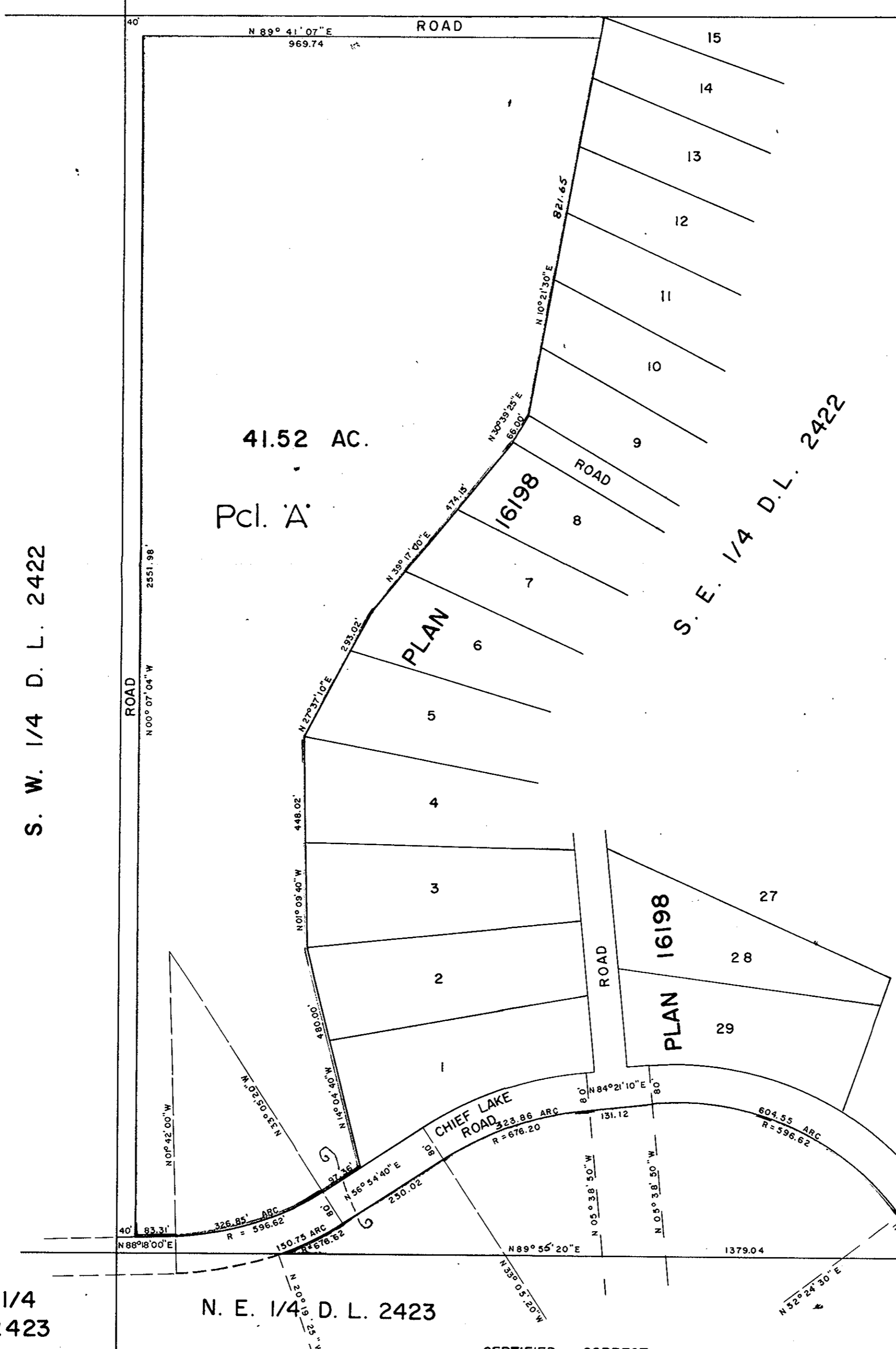
Deposited in the Land Registry
 Office at Prince George, B.C. this
 4 day of JANUARY, 1973.

E.T. SCHOOLEY
 Registrar

per: J. S. Finstok
 (SURVEYOR L.R.O.)

N.W. 1/4
 D. L. 2422

N. E. 1/4 D. L. 2422



N. W. 1/4
 D. L. 2423

N. E. 1/4 D. L. 2423

OWNER _____

WITNESS _____

CERTIFIED CORRECT
 According to information
 as shown on Plan 16198.

D. A. Duffy
 D. A. DUFFY, B.C.L.S.
 August 3, 1970.

Approved under the Land Registry Act
 this 22 day of DECEMBER, 1970.

E.T. Schooley
 Approving Officer, Dept. of Highways.

This plan lies within the Fraser-Fort George
 Regional District.

W.D. USHER & ASSOCIATES
 LAND SURVEYORS
 PRINCE GEORGE - B.C.
 3254