

N.W. 1/4 D.L. 2432

N.E. 1/4 D.L. 2432

OPP
Made BTs.
11" Spruce 19.1' 76°
9" Balsam 17.2' 225°

PLAN OF SUBDIVISION of PARTS of:
S.E. 1/4 D.L. 2432, S.W. 1/4 D.L. 2432,
and N.E. 1/4 D.L. 2433, CARIBOO DISTRICT.
Scale: 1" = 100'

PLAN NO.: 20571

PRINCE GEORGE 14. DECEMBER 1972

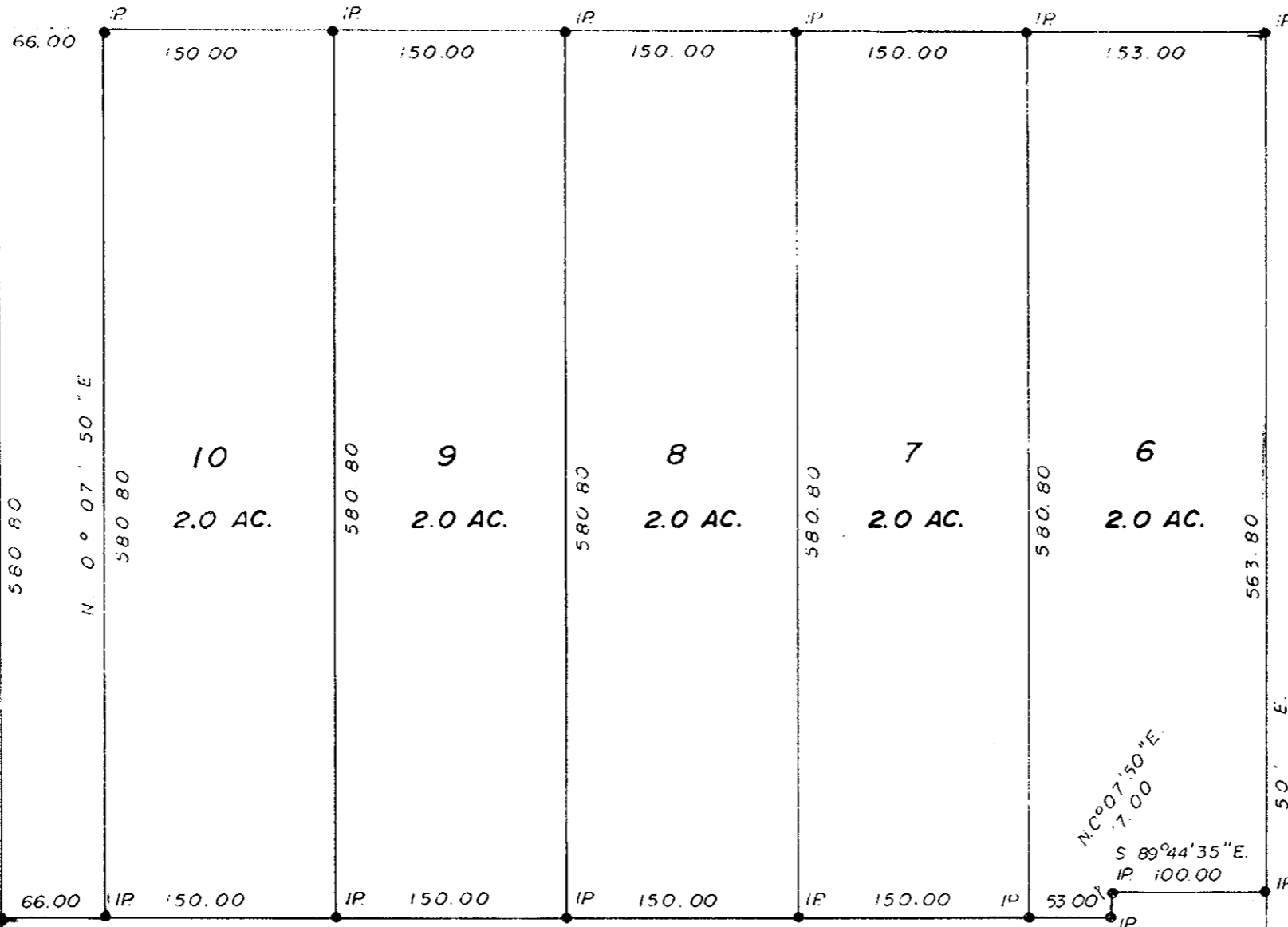
REM. S.E. 1/4 D.L. 2432

S 89° 44' 35" E

E.T. SCHUDLEY

PER:

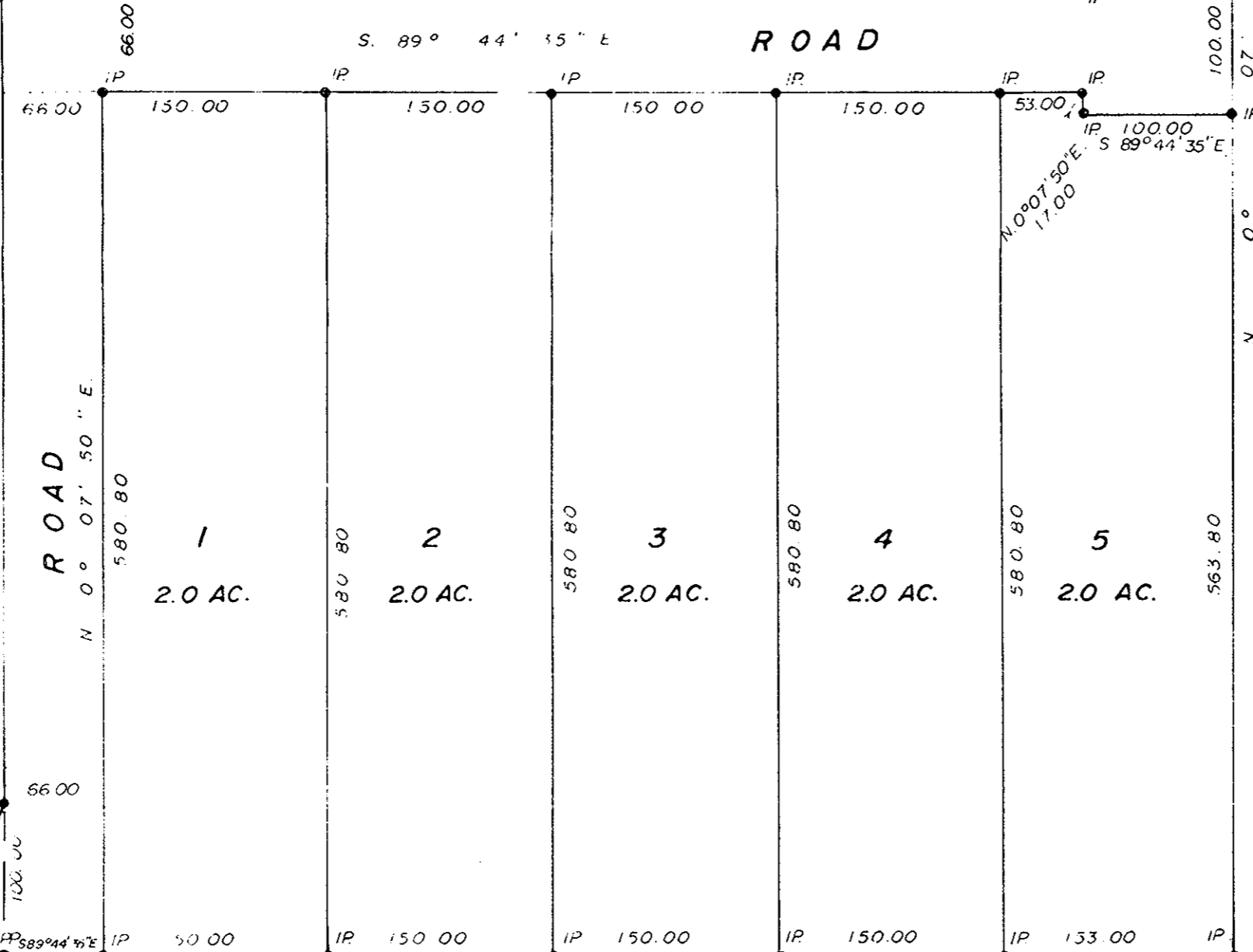
(Surveyor L.R.O.)



S.W. 1/4
D.L. 2432

REM. S.E. 1/4 D.L. 2432

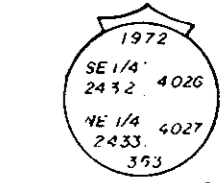
ROAD



PL. 17020
N.W. 1/4
D.L. 2433
ROAD

N.E. 1/4 D.L. 2433

S 89° 44' 35" E
2636.99 OPP to PP

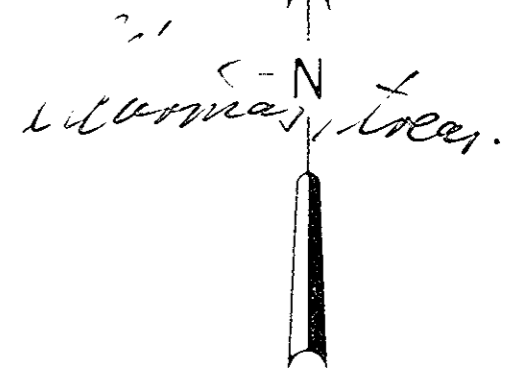


Made BTs.
14" Poplar 5.2' 225°
16" Poplar 20.5' 03°
5" Balsam 13.4' 170°

THIS PLAN LIES WITHIN THE FRASER
FORT-GEORGE REGIONAL DISTRICT.

17 NOVEMBER 1972

17 NOVEMBER 1972



A DANILUCK OF THE CITY OF PRINCE GEORGE
WITNESSES AND SURVEYOR MADE BTs. AND
THAT WILL BE PRESENT AT AND THE SURVEYING
THE SURVEY REFERENCED BY THIS PLAN AND THAT THE
PLAN AND PLAN ARE CORRECT AND THAT THE
WITNESSES AND PLAN ARE CORRECT AND THAT THE
WITNESSES AND PLAN ARE CORRECT AND THAT THE

EAST BOY. OF ROAD SHOWN AS N. 0° 03' 50" E. ON
PLAN 17020.

SWORN BEFORE ME AT PRINCE GEORGE, B.C.
THIS 24th day of July 1972

OWNER Mabel Walter
As to Rem. SW. 1/4 D.L. 2432

OWNER
As to N.E. 1/4 D.L. 2433

WITNESS

WITNESS Stella Schreiner

NEW LAM WHITE GOBLE & ASSOCIATES
SURVEYORS
PRINCE GEORGE

REF NO.: 72060

D.L. 4026
D.L. 4027