

EXPLANATORY PLAN OF RIGHT OF WAY THROUGH THE SOUTHWEST 1/4, OF DISTRICT LOT 750, CARIBOO DISTRICT.

Scale:- 1 inch = 200 feet.

FOR PURPOSE OF ELECTRIC POWER DISTRIBUTION.

Bearings are astronomic, derived from right of way plan A-2892.

Area Required 1.70 Acres

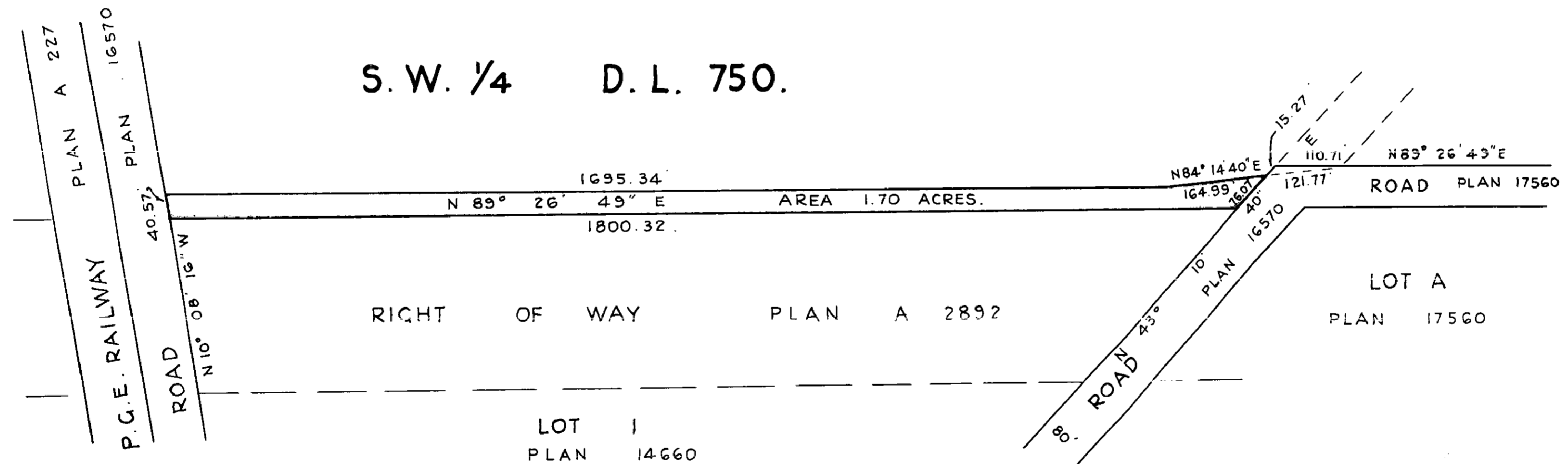
PLAN 20527

Deposited in the Land Registry Office of Prince George, B.C. This 24 day of Nov, 1972.

"E.T. SCHOOLEY"

Registrar

PER: *J. Spintale*
(SURVEYOR I.R.O.)



Certified correct according to Land Registry Office Records. This 31st day of October, 1972.

Calvin H. Bracey B.C.L.S.

LAND SURVEY SECTION,
B.C. HYDRO & POWER AUTHORITY,
8751 - 124TH STREET, SURREY.

THIS PLAN LIES WITHIN THE FRASER-FORT GEORGE REGIONAL DISTRICT.