

EXPLANATORY PLAN OF RIGHT OF WAY THROUGH THE NORTHEAST 1/4 OF DISTRICT LOT 2012, CARIBOO DISTRICT.

PLAN 20526

FOR PURPOSE OF ELECTRIC POWER DISTRIBUTION

Scale: 1 inch = 200 feet

Bearings are astronomic, derived from Right of Way Plan A-2892.

Area Required 2.50 Acres.

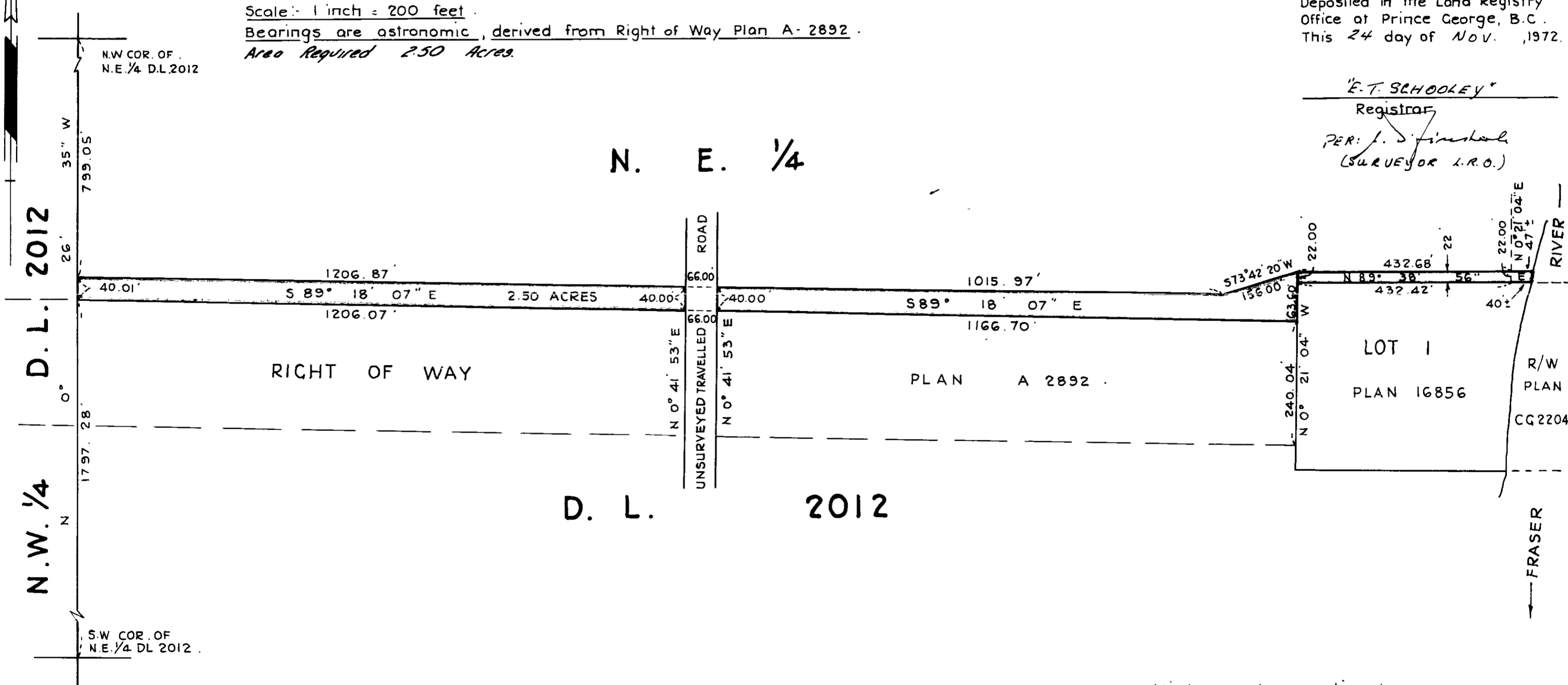
Deposited in the Land Registry Office at Prince George, B.C. This 24 day of Nov. 1972.

E.T. SCHOOLEY

Registrar

PER: *J. S. Finckel*
(SURVEYOR I.R.O.)

N. E. 1/4



D. L. 2012
N. E. 1/4
N. W. 1/4

N.W. COR. OF N.E. 1/4 D.L. 2012

S.W. COR. OF N.E. 1/4 D.L. 2012

RIGHT OF WAY

PLAN A 2892

LOT 1
PLAN 16856

RIVER
R/W PLAN CG2204

D. L. 2012

FRASER

Certified correct according to Land Registry Office Records. This 31st day of October, 1972

Calvin H. Bruce
B.C.L.S.

LAND SURVEY SECTION,
B.C. HYDRO & POWER AUTHORITY,
8751-124th STREET SURREY, B.C.

THIS PLAN LIES WITHIN THE FRASER FORT GEORGE REGIONAL DISTRICT.