

EXPLANATORY PLAN OF RIGHT OF WAY THROUGH THE SOUTHEAST 1/4 OF DISTRICT LOT 750, CARIBOO DISTRICT.

FOR PURPOSE OF ELECTRIC POWER DISTRIBUTION.

Scale:- 1 inch = 200 feet.

Bearings are astronomic, derived from Right of Way Plan A-2892.

PLAN 20525

Deposited in the Land Registry Office at Prince George B.C. This 24 day of Nov. 1972.

"E. T. SCHOOLEY"
Registrar.
PER: *J. S. Finnie*
(SURVEYOR I.R.O.)

S. E. 1/4 D. L. 750

RIGHT OF WAY
PLAN A - 2892

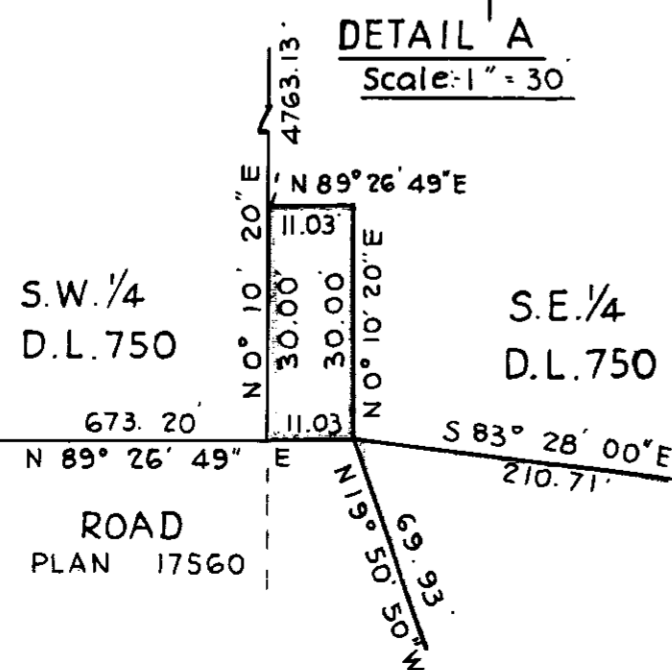
AREA 2.41 ACRES.

50
PLAN 916
D.L. 1564

11
1564

10
D. L.

20



Certified correct according to Land Registry Office Records, This 30th day of October, 1972.

Colin H. Bracey B.C.L.S.

LAND SURVEY SECTION,
B. C. HYDRO & POWER AUTHORITY
8751 - 124TH STREET, SURREY.

THIS PLAN LIES WITHIN THE FRASER FORT GEORGE REGIONAL DISTRICT.