

# EXPLANATORY PLAN OF RIGHT OF WAY THROUGH THE SOUTH 1/2 OF DISTRICT LOT 749, EXCEPT PLAN A-227, CARIBOO DISTRICT.

Scale: 1 inch = 300 feet.

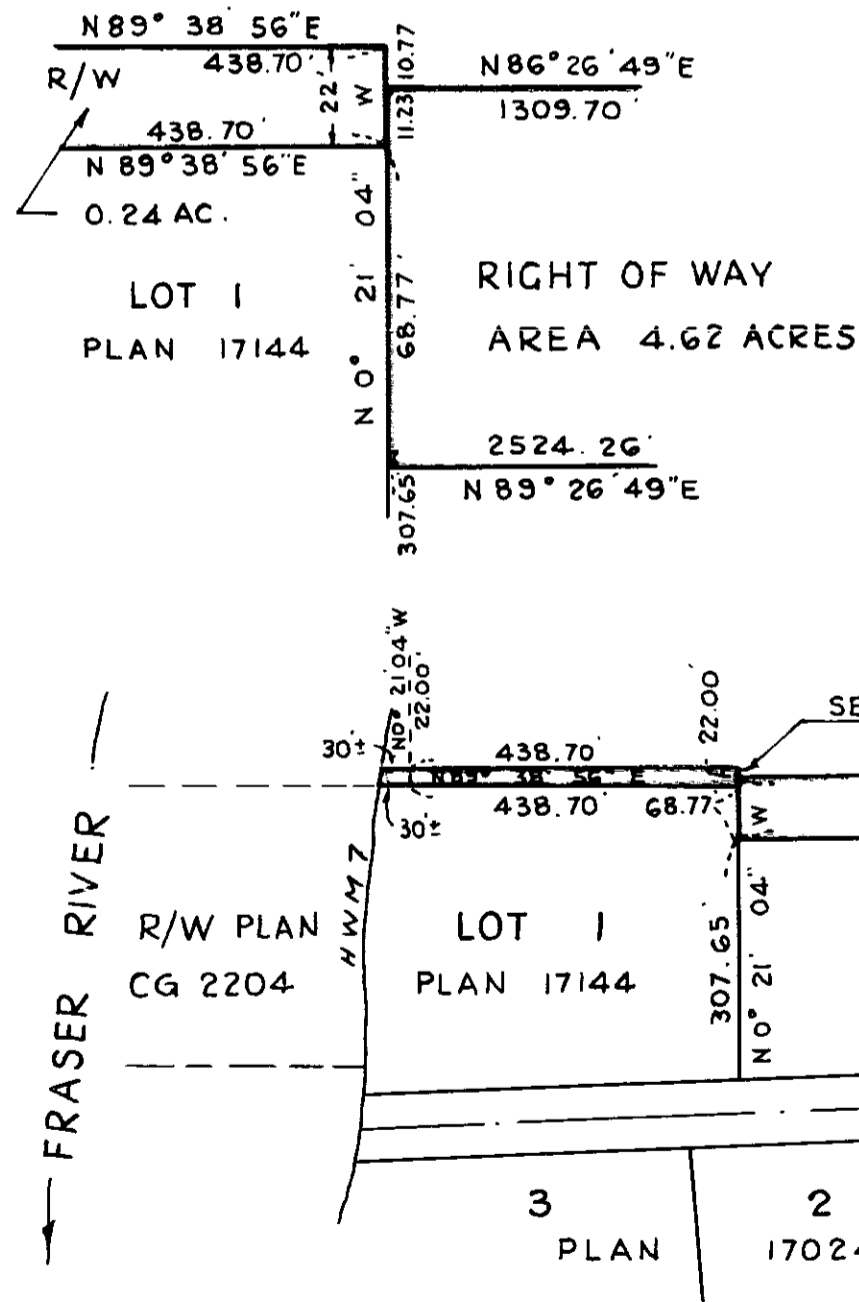
FOR PURPOSE OF ELECTRIC POWER TRANSMISSION.

Bearings are astronomic, derived from Plans A-2892 and 16570.

## PLAN 20524

Deposited in the Land Registry Office at Prince George B.C. This 24 day of NOVEMBER 1972.

DETAIL A  
Scale: 1 inch = 50 feet.



S 1/2  
D.L. 749

"E. T. SCHOOLEY"  
Registrar  
PER: *[Signature]*  
(SURVEYOR I.R.O.)

S.W. 1/4  
D.L. 750

LOT A  
PLAN 16570

RIGHT OF WAY

BLOCK A  
D.L. 751

Certified correct according to Land Registry Office Records. This 31<sup>st</sup> day of October, 1972.

*[Signature]* C.L.S.

LAND SURVEY SECTION  
B.C. HYDRO & POWER AUTHORITY,  
8751-124<sup>TH</sup> STREET, SURREY.

AREA REQUIRED 4.86 ACRES.  
THIS PLAN LIES WITHIN THE FRASER - FORT GEORGE REGIONAL DISTRICT.