

Plotted HQ

PLAN OF SUBDIVISION OF
LOT A, PLAN 8611,
DISTRICT LOT 753
EXCEPT PLAN 19106, LOT A, PLAN 9004,
DISTRICT LOT 753
EXCEPT PLANS 19106, 19163 , 19462 & 16269
AND LOT A, PLAN 16563
DISTRICT LOT 753
CARIBOO DISTRICT, BRITISH COLUMBIA

SCALE : 1" = 100'

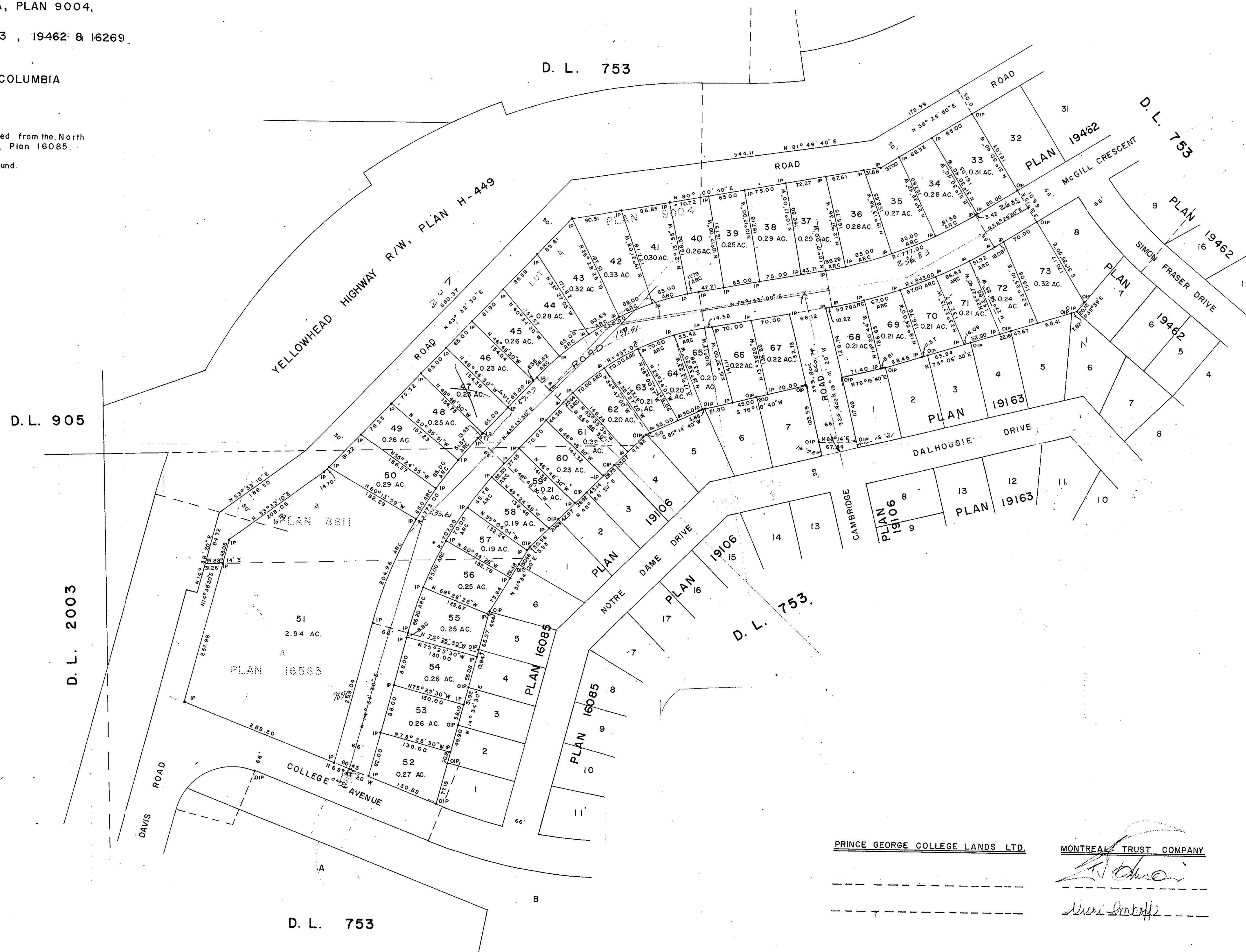
NOTE: Bearings are astronomic, derived from the North boundary of College Avenue, Plan 16085.

LEGEND: •OIP denotes an old iron pin found.
•IP denotes an iron pin set.

PLAN No **20510**
Deposited in the L and Registry
Office at Prince George, B.C. this
-- 20 -- day of NOV., 1972.

E.T. SCHOOLEY
Registrar

PER: *[Signature]*
(SURVEYOR L.F.O.)



I, DONALD A. DUFFY of the City of Prince George,
a British Columbia Land Surveyor, make oath and say
that I was present at and did personally superintend
the survey represented by this plan and that the survey
and plan are correct. The said survey was completed
on the 12th day of JULY 1972.

Sworn before me this 3rd
day of August, 1972.

A Commissioner for taking Affidavits
for British Columbia.

PRINCE GEORGE COLLEGE LANDS LTD.

MONTREAL TRUST COMPANY

Approved under the Land Registry Act
this 17 day of NOVEMBER, 1976

Approving Officer, Dept. of Highways

This plan lies within the Fraser-Fort George Regional District.

W.D. USHER & ASSOCIATES
LAND SURVEYORS
PRINCE GEORGE — B.C.
FA 11-25 3798