

RECEIVED

FEB 2 1978

CITY ASSESSOR
PRINCE GEORGE

PLAN N^o **20509**

Deposited in the Land Registry
Office at Prince George, B.C. this
20th day of NOVEMBER, 1972.

E.T. SCHOOLEY
Registrar

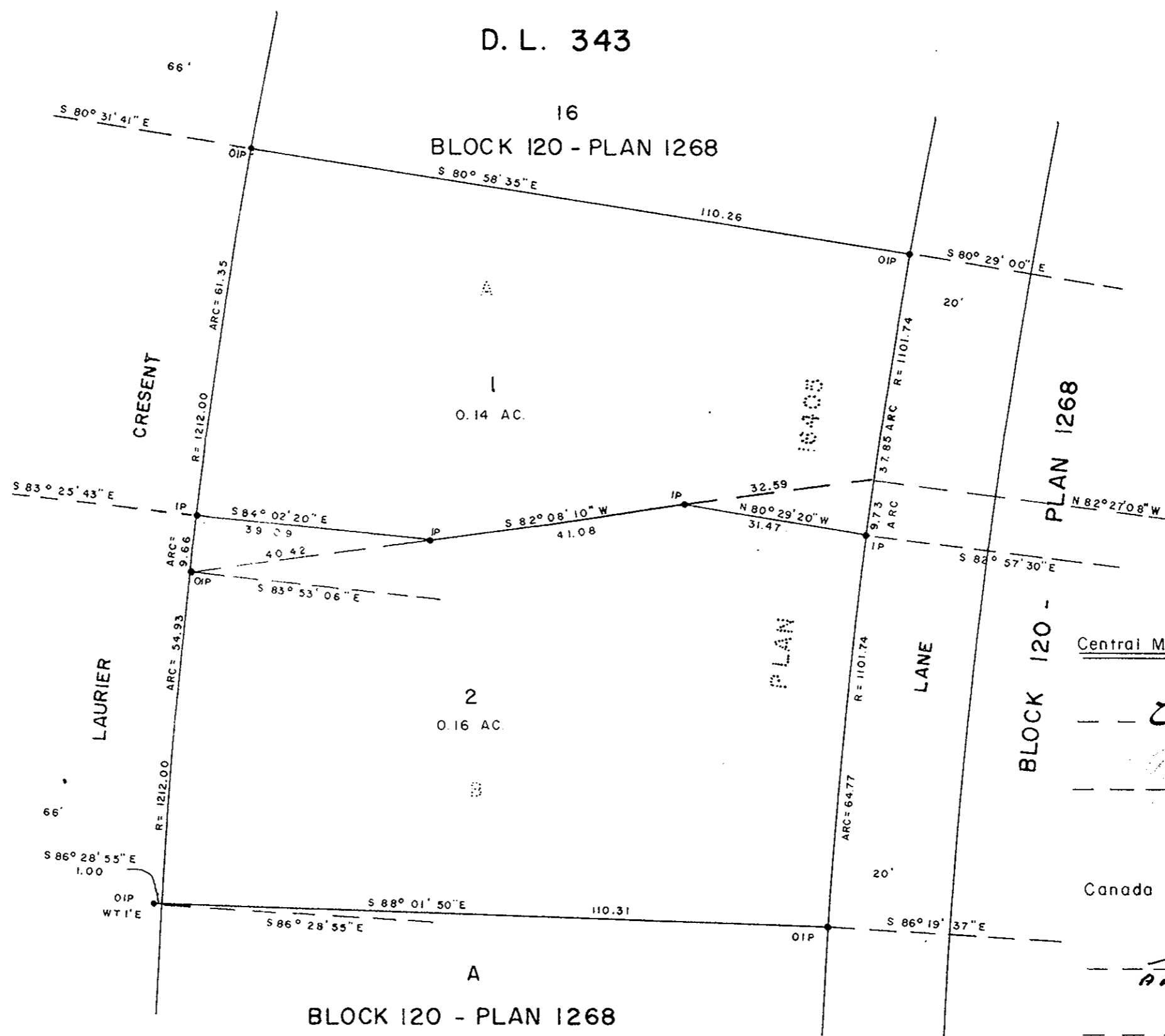
Per: J. J. Finlay
(SURVEYOR L.R.O.)

PLAN OF SUBDIVISION OF
LOTS A AND B, PLAN 16405
DISTRICT LOT 343
CARIBOO DISTRICT, BRITISH COLUMBIA

SCALE: 1" = 20'

NOTE: Bearings are astronomic, derived from the
North boundary of Lot A, Plan 16405.

LEGEND: •OIP denotes an old iron pin found.
•IP denotes an iron pin set.
WT. denotes Witness



D. L. 343

Central Mortgage and Housing Corporation

Charles Brown
for President
General Solicitor

Canada Permanent Mortgage Corporation

A. O. Lewis
AUTHORIZED OFFICER
Shaw
AUTHORIZED OFFICER

I, DONALD A. DUFFY of the City of Prince George,
a British Columbia Land Surveyor, make oath and say
that I was present at and did personally superintend
the survey represented by this plan and that the survey
and plan are correct. The said survey was completed
on the 22nd day of February, 1971.

D. A. Duffy
B.C.L.S.

Sworn before me this 25TH
day of FEB, 1971.

E. D. Monton
A Commissioner for taking Affidavits
for British Columbia.

Charles Brown
Owner

Shaw
Witness

A. O. Lewis
Owner

Shaw
Witness

Reapproved this 16th day of NOV, 1972

C. E. Olot
Approving Officer, City of Prince George

Approved under the Land Registry Act
this 16th day of NOV, 1972

C. E. Olot
Approving Officer, City of Prince George

This plan lies within the Fraser-Fort George
Regional District.