

PLAN OF SUBDIVISION OF PART OF
NORTHWESTERLY 156.73 ACRES OF D.L. 4028
 CARIBOO DISTRICT, BRITISH COLUMBIA

PLAN N^o **20461**

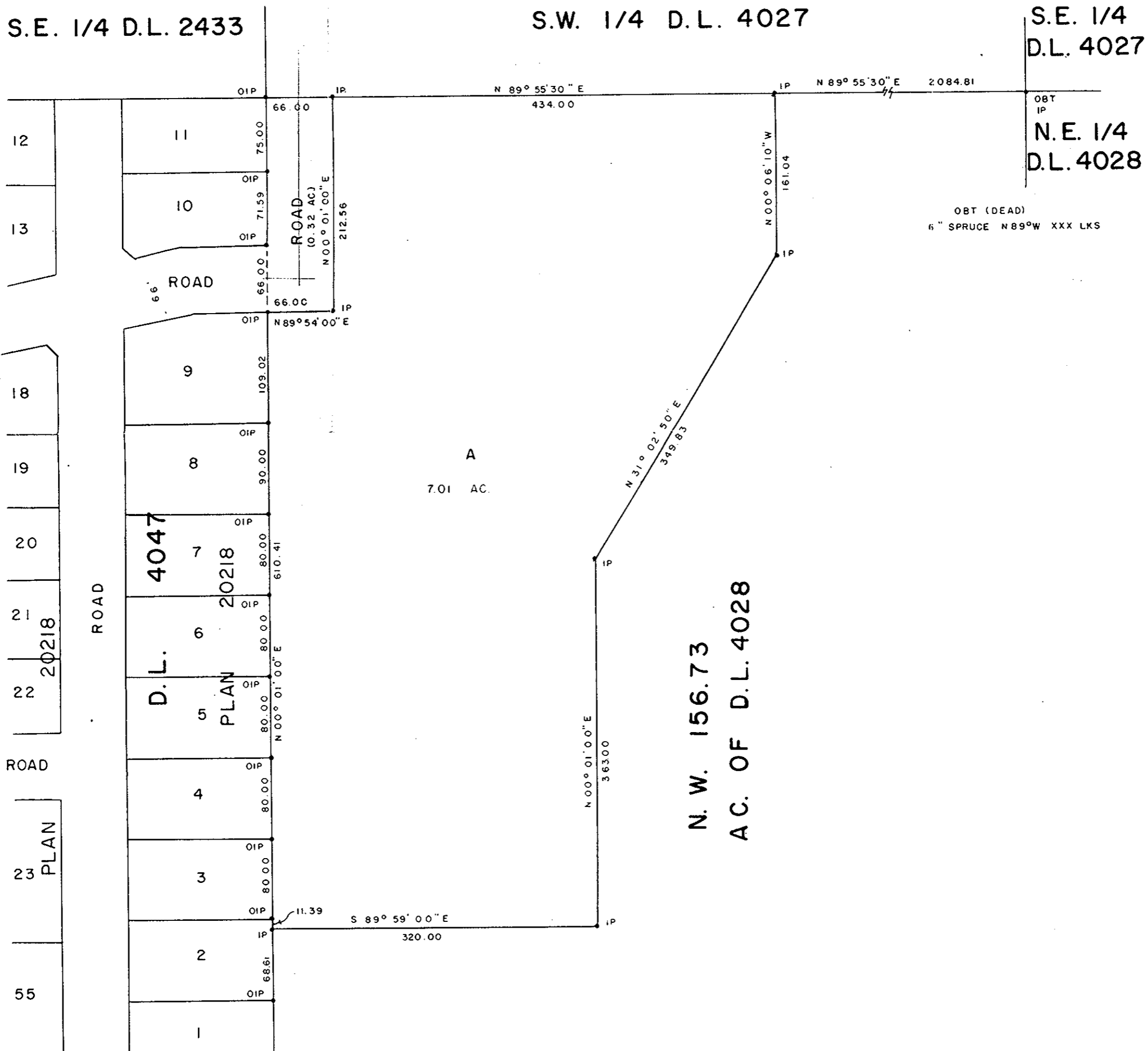
Deposited in the Land Registry
 Office at Prince George, B.C. this
 24th day of October, 1972

SCALE: 1" = 100'

NOTE: Bearings are astronomic, derived from the West
 boundary of N.W. 1/4 D.L. 4028, as shown on
 Plan 20218.

LEGEND: •OIP denotes an old iron pin found.
 •IP denotes an iron pin set.
 •OBT denotes old bearing tree.

E. J. Schooley
 Registrar



I, DONALD A. DUFFY of the City of Prince George, a British Columbia Land Surveyor, make oath and say that I was present at and did personally superintend the survey represented by this plan and that the survey and plan are correct. The said survey was completed on the 25th day of September, 1972.

The Board of School Trustees of
School District No. 57 (Prince George)

Approved under the Land Registry Act
 this 10th day of OCTOBER, 1972.

[Signature]
 B.C.L.S.

Chairman

[Signature]
 Approving Officer, Dept. of Highways.

Secretary-Treasurer

Sworn before me this 12th
 day of OCTOBER, 1972

A Commissioner for taking Affidavits
 for British Columbia.

This plan lies within the Fraser-Fort George
 Regional District.