

Plotted GN

PLAN NO.: 20420

DEPOSITED IN THE LAND REGISTRY OFFICE AT PRINCE GEORGE ON THE 15th DAY OF OCTOBER 1972

# PLAN OF SUBDIVISION OF PART OF D.L. 1427 CARIBOO DISTRICT

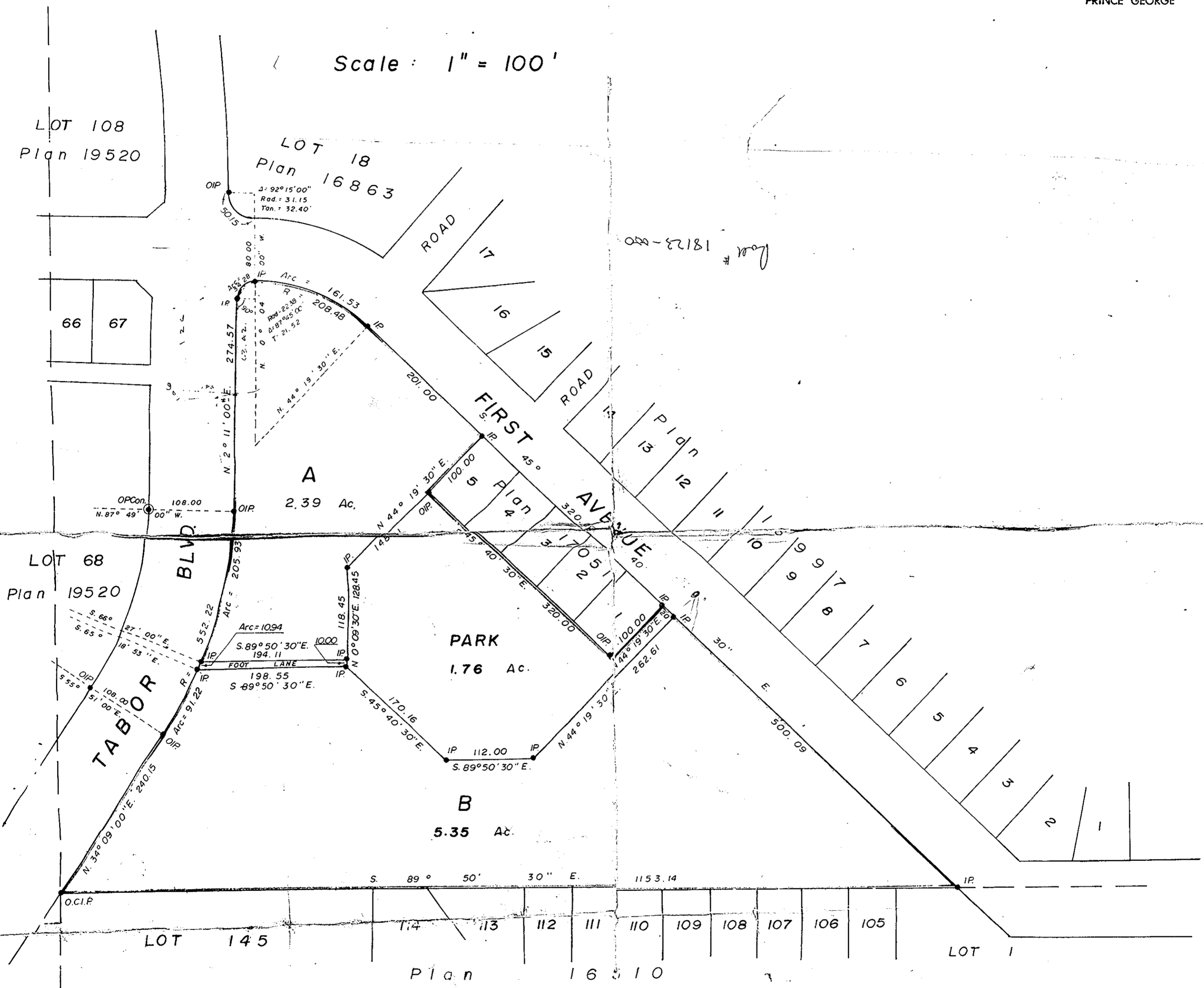
E. J. Schanley  
REGISTRAR  
Rev. J. J.

RECEIVED

DEC 5 1972

CITY ASSESSOR  
PRINCE GEORGE

Scale: 1" = 100'



I, D. KEOWN OF THE CITY OF PRINCE GEORGE BRITISH COLUMBIA LAND SURVEYOR MAKE OATH AND SAY THAT I WAS PRESENT AT AND DID PERSONALLY SUPERINTEND THE SURVEY REPRESENTED BY THIS PLAN, AND THAT THE SURVEY AND PLAN ARE CORRECT THE SAID SURVEY WAS COMPLETED ON THE ... DAY OF ... 1972.

D. KEOWN B.C.L.S.  
SWORN BEFORE ME AT PRINCE GEORGE, B.C. THIS ... DAY OF ... 1972.

BEARINGS ARE ASTRONOMIC AND ARE DERIVED FROM O.I.P.s. SHOWN ON PLAN 17051.

- P.C.P. STANDARD CONCRETE POST
- P.P. STANDARD PIPE POST
- O.C.I.P. STANDARD CAPPED IRON POST
- I.P. STANDARD IRON POST
- B.T. BEARING TREE
- O. DENOTING OLD

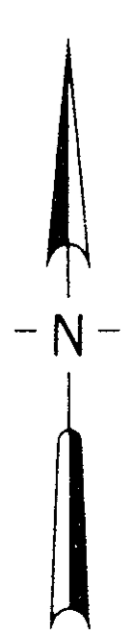
THIS PLAN LIES WITHIN THE FRASER FORT GEORGE REGIONAL DISTRICT.

APPROVED UNDER THE LAND REGISTRY ACT THIS 13th DAY OF SEPT. 1972

C. E. Olat  
APPROVING OFFICER

OWNER

WITNESS



A COMMISSIONER FOR TAKING AFFIDAVITS FOR BRITISH COLUMBIA

McWILLIAM - WHYTE - GOBLE & ASSOCIATES  
B.C. LAND SURVEYORS  
KAMLOOPS - SMITHERS - PRINCE GEORGE  
REF. NO.: 72036