

PLAN OF SUBDIVISION OF  
S.W. 1/4 DISTRICT LOT 2422  
CARIBOO DISTRICT, BRITISH COLUMBIA

SCALE: 1" = 200'

NOTE: Bearings are astronomic, derived from the South boundary of the S.W. 1/4 D.L. 2422 as shown on Plan 16198.

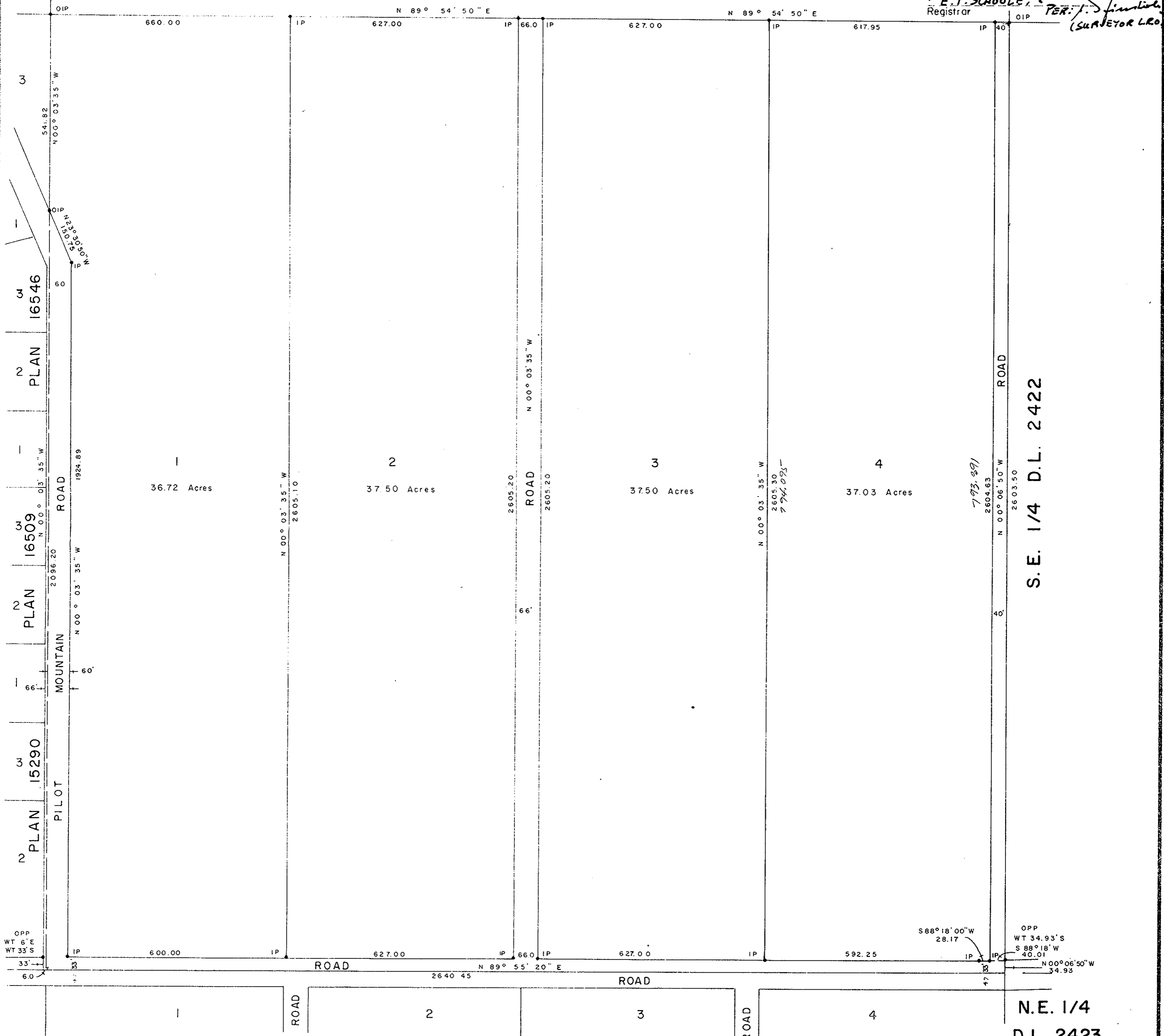
LEGEND: •OPP denotes an old pipe post found.  
•OIP denotes an old iron pin found.  
•IP denotes an iron pin set.  
WT denotes witness.

PLAN N° 20393

Deposited in the Land Registry Office at Prince George, B.C. this 25th day of SEPT., 1972

E.T. SCHOOLEY, Registrar  
PER: J. J. Simola (SURVEYOR L.R.O.)

N.W. 1/4 D.L. 2422



S.E. 1/4 D.L. 2422

PLAN 20279

N.W. 1/4 D.L. 2423

DONALD A. DUFFY of the City of Prince George, British Columbia Land Surveyor, made oath and was present at and did personally supervise the survey represented by this plan and that the survey and data are correct. The said survey was completed on the 23rd day of September, 1972.

F.G.L. DEVELOPMENT LTD.

Leo Fontaine  
PRESIDENT

Approved under the Land Registry Act this 14th day of SEPTEMBER, 1972.

Approving Officer, Dept. of Highways.

This plan lies within the Fraser-Fort George Regional District.