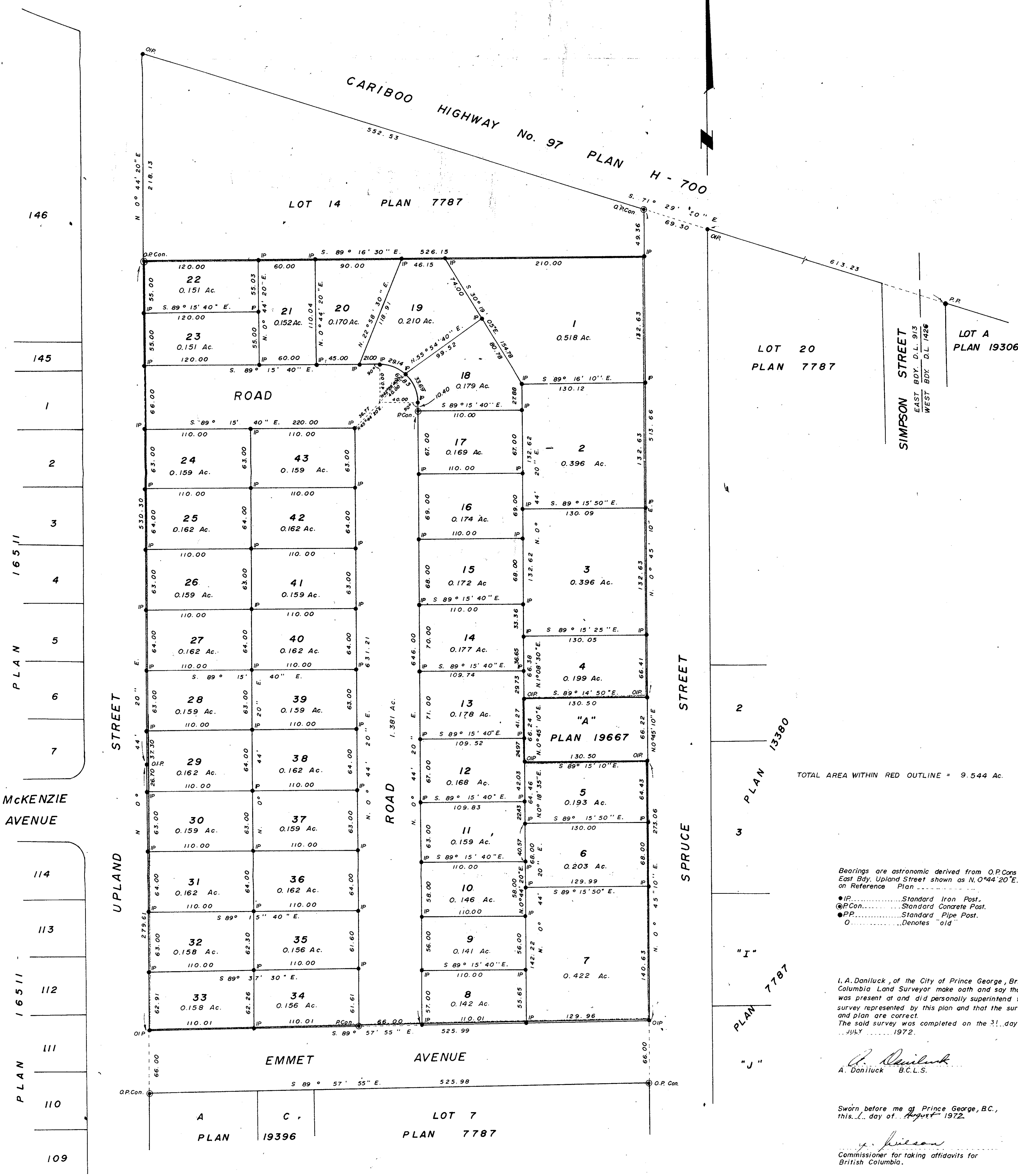


R-2

PLAN OF SUBDIVISION
 PREPARED PURSUANT TO RE-PLOTTING
 PROVISIONS OF THE MUNICIPAL ACT OF:
 ASSIGNED PARCEL A, AS OUTLINED IN RED
 ON REFERENCE PLAN -----
 DISTRICT LOT 913, CARIBOO DISTRICT.
 SCALE: 1" = 50'

Registrar



TOTAL AREA WITHIN RED OUTLINE = 9.544 Ac.

Bearings are astronomic derived from O.P.Cons
 East Bdy. Upland Street shown as N.0°44'20"E.
 on Reference Plan -----
 ●IP.....Standard Iron Post.
 ●PCon.....Standard Concrete Post.
 ●PP.....Standard Pipe Post.
 O.....Denotes "old"

I. A. Daniluck, of the City of Prince George, Brit
 Columbia Land Surveyor make oath and say that
 was present at and did personally superintend the
 survey represented by this plan and that the survy
 and plan are correct.
 The said survey was completed on the 31 day of
 JULY 1972.

I. A. Daniluck
 A. Daniluck B.C.L.S.

Sworn before me at Prince George, B.C.,
 this 1 day of August 1972.

J. Wilson
 Commissioner for taking affidavits for
 British Columbia.

This plan lies within the Fraser-Fort
 George Regional District.

Approved under the Land Registry Act
 on the 2 day of August 1972.

J. Wilson
 Approving Officer
 City of Prince George

The Seal of the City of Prince George