

Plotted (EM) DM

PLAN OF SUBDIVISION OF PARTS OF DISTRICT LOTS 5172, 7637, 10237, 10314 AND 10315 CARIBOO DISTRICT, BRITISH COLUMBIA

PLAN No 20383 Deposited in the Land Registry Office at Prince George, B.C. this 21 day of September 1972

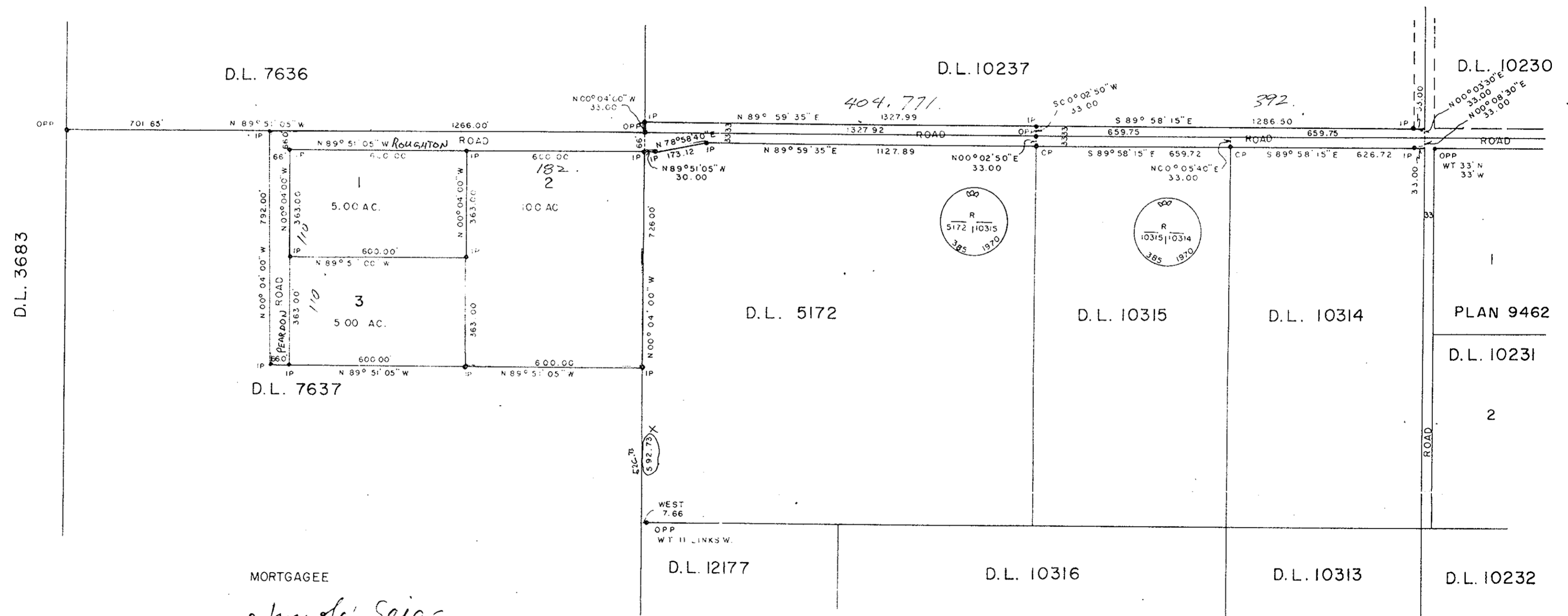
E. L. DeBarley Registrar

SCALE: 1" = 300'

NOTE: Bearings are astronomic, derived from the West Boundary of D.L. 5172.

- LEGEND: • OPP denotes an old pipe post found. • CP denotes a capped iron pin placed on this survey. • IP denotes an iron pin placed on this survey.

20810 21705 23240



I, DONALD A. DUFFY, of the City of Prince George, a British Columbia Land Surveyor, make oath and say that I was present at and did personally superintend the survey represented by this plan and that the survey and plan are correct. The said survey was completed on the 7th day of AUGUST, 1970.

Donald A. Duffy B.C.L.S.

HOMEPLAN REALTY LTD. ADMINISTRATIVE MANAGER TREASURER

Sworn before me this 15th day of August, 1972.

Commissioner for taking Affidavits for British Columbia.

Owner W. R. Jeschke Witness M. Kozma Owner Emilie Schultz Witness M. Kozma

WESTRIDGE HEIGHTS ENTERPRISE LTD.

Approved under the Land Registry Act this 14th day of SEPTEMBER 1972. Approving Officer, Dept. of Highways

This plan lies in the Fraser-Fort George Regional District.

W.D. USHER & ASSOCIATES LAND SURVEYORS PRINCE GEORGE B.C. DG 5-7, 23 2948