

PLAN OF SUBDIVISION
OF PARCEL "X" (G-9435), PLAN -----,
DISTRICT LOTS 8177 and 8178,
CARIBOO DISTRICT.
SCALE: 1" = 100'

PLAN NO. 20375
Deposited in the Land Registry Office at
Prince George this... day of... 1972.

Registrar

SUBJECT TO CONDITIONS IMPOSED BY MY ORDER DATED -----
I ALLOW THIS SUBDIVISION TO BE MADE AND EVIDENCED IN THE MANNER PRESCRIBED
BY SECTION 80 (9), LAND REGISTRY ACT CHAPTER 201, R.S.B.C. 1960.
DATED AT VICTORIA, B.C. THIS... DAY OF... A.D., 1972.

SURVEYOR - GENERAL

THE CONDITIONS OF THE ABOVE MENTIONED ORDER ARE ACCEPTED.
NAME OF SUBDIVIDER: ATLA HOMES LTD.

THE ORDER OF THE SURVEYOR GENERAL DATED -----
HAS BEEN FILED IN THE LAND REGISTRY OFFICE ----- B.C.
AS NUMBER -----

REGISTRAR OF TITLES

A	Δ = 90° 01' 40" T = 20.00 R = 19.99 Arc = 31.41	H	Δ = 72° 33' 10" T = 16.89 R = 25.01 Arc = 29.14
B	Δ = 89° 58' 20" T = 20.00 R = 20.01 Arc = 31.42	I	Δ = 89° 56' 30" T = 20.00 R = 20.02 Arc = 31.43
C	Δ = 105° 49' 18" T = 24.45 R = 19.60 Arc = 36.94	J	Δ = 91° 09' 30" T = 20.00 R = 19.60 Arc = 31.43
D	Δ = 87° 59' 06" T = 18.46 R = 20.00 Arc = 30.71	K	Δ = 88° 50' 30" T = 20.00 R = 20.41 Arc = 31.64
E	Δ = 78° 55' 31" T = 16.46 R = 20.00 Arc = 27.55	L	Δ = 102° 38' 10" T = 24.99 R = 20.00 Arc = 55.83
F	Δ = 90° 00' 00" T = 20.00 R = 20.00 Arc = 31.42	M	Δ = 89° 31' 30" T = 20.00 R = 20.05 Arc = 31.44
G	Δ = 89° 56' 00" T = 20.00 R = 20.02 Arc = 31.43		

NO.	BEARING	DISTANCE
1	S. 45° 14' 35" E.	46.64
2	N. 48° 25' 40" W.	50.00
3	N. 0° 38' 10" W.	50.00
4	N. 10° 54' 03" E.	50.00
5	N. 56° 21' 50" E.	50.00
6	S. 41° 05' 10" E.	50.00
7	N. 45° 13' 55" W.	47.15
8	N. 40° 29' 20" E.	50.00
9	N. 59° 21' 50" E.	50.00
10	S. 60° 38' 10" E.	50.00
11	S. 12° 10' 25" E.	50.00
12	S. 0° 39' 10" E.	50.00
13	S. 49° 02' 50" W.	50.00
14	N. 64° 45' 40" W.	46.70
15	S. 45° 14' 20" W.	46.64

Bearings are astronomic derived from
Reference Plan 20063.

- P Con. Standard Concrete Post
- PP Standard Pipe Post
- I.P. Standard Iron Post
- C.I.P. Capped Iron Post
- O Denoting "old"
- Wt. Denoting "witness"

I, A. Daniluck, of the City of Prince George,
British Columbia Land Surveyor, make oath and
say that I was present at and did personally
superintend the survey represented by this
plan and that the survey and plan are correct.
The said survey was completed on the
1st day of August, 1972.

A. Daniluck
A. Daniluck, B.C.L.S.

Approved under the Land Registry Act
this 12th day of AUG., 1972.

[Signature]
Approving Officer
City of Prince George

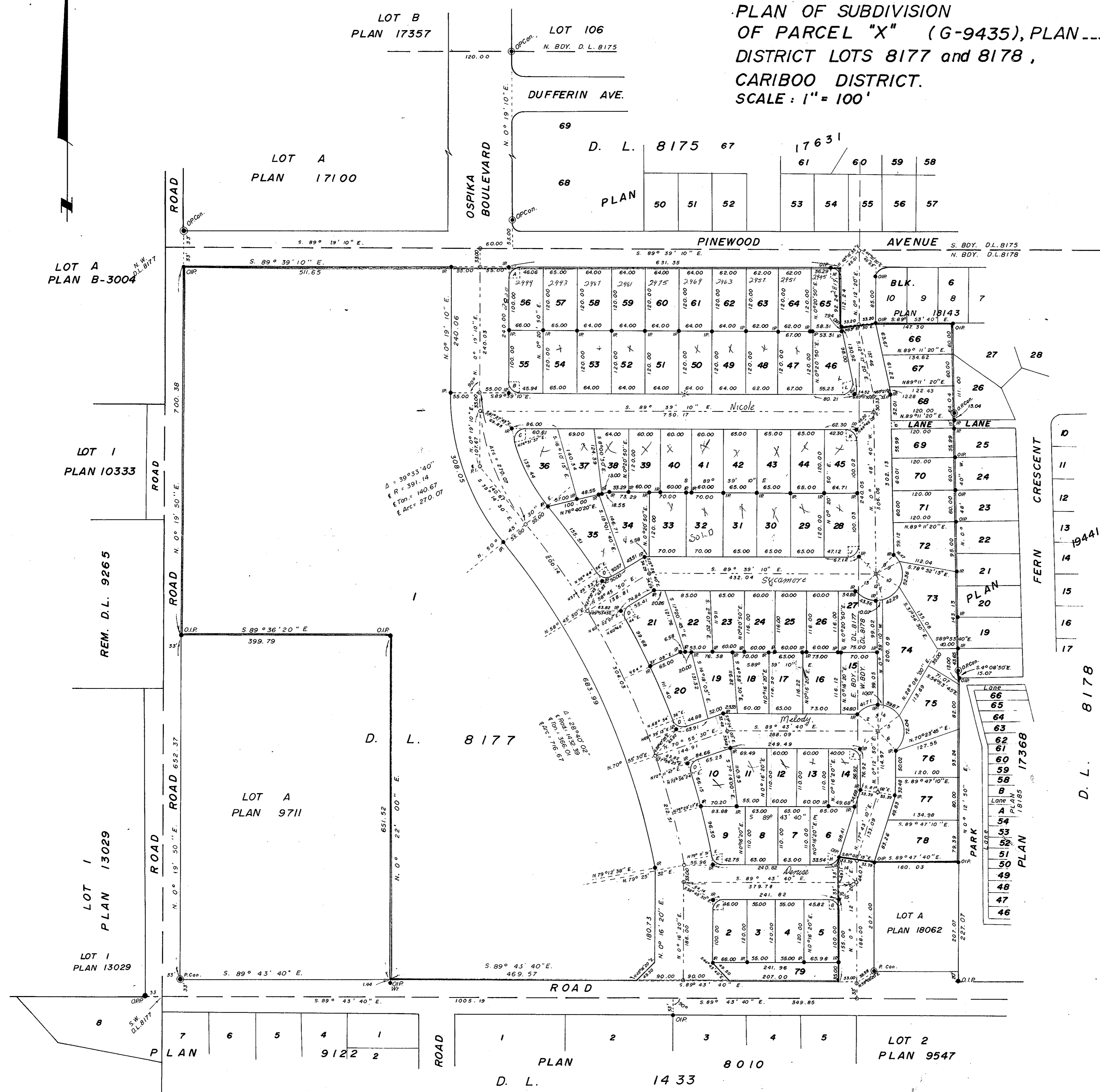
Sworn before me at Prince George, B.C.,
this 2nd day of August, 1972.

[Signature]
Commissioner for taking affidavits within
British Columbia.

Registered Owner
Atla Homes Ltd. *[Signature]*

This plan lies within the Fraser Fort-George
Regional District.

McWilliam, Whyte, Goble, & Associates,
B.C. Land Surveyors,
Prince George - Kamloops - Smithers.
REF. NO. 72064-C



LOT A
PLAN B-3004

LOT I
PLAN 10333

REM. D.L. 9265

LOT I
PLAN 13029

LOT A
PLAN 9711

LOT 2
PLAN 9547

PLAN
D. L. 1433

D
11
12
13
14
15
16
17
FERN CRESCENT
D. L. 8178