

Plotted (ED) (FD)

PLAN OF SUBDIVISION OF  
N. 1/2 OF DISTRICT LOT 1571  
EXCEPT PLANS 14923 & 15590 & 16586  
CARIBOO DISTRICT - BRITISH COLUMBIA

SCALE: 1" = 200'

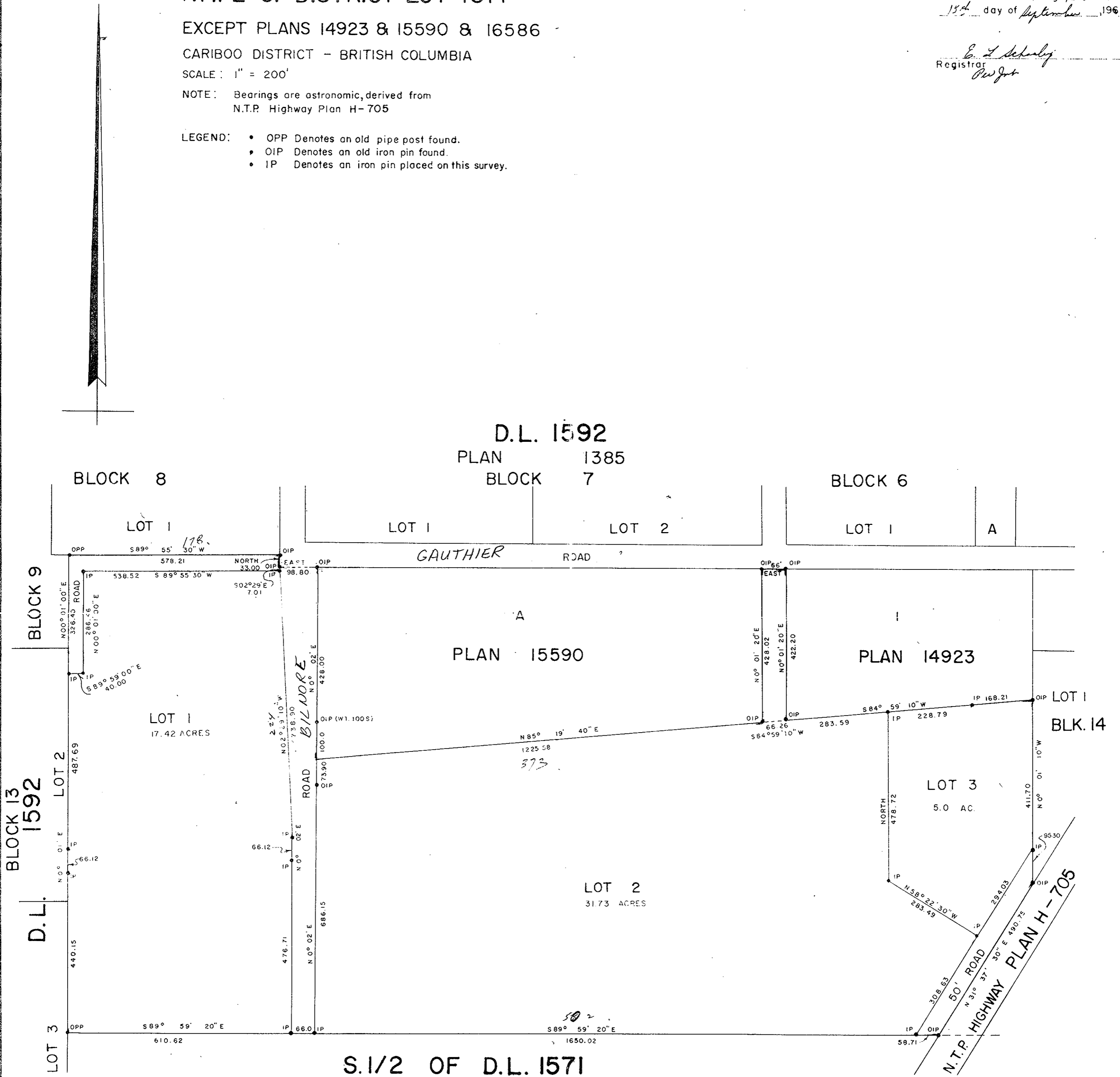
NOTE: Bearings are astronomic, derived from  
N.T.P. Highway Plan H-705

- LEGEND:
- OPP Denotes an old pipe post found.
  - OIP Denotes an old iron pin found.
  - IP Denotes an iron pin placed on this survey.

~~NO METRIC~~  
~~SCALE~~

PLAN No. **20371**  
Deposited in the Land Registry  
Office at Prince George, B.C. this  
13<sup>th</sup> day of September, 1967

*E. L. Schaefer*  
Registrar



I, DONALD A. DUFFY, of the City of Prince George, a British Columbia Land Surveyor make oath and say that I was present at and did personally superintend the survey represented by this plan and that the survey and plan are correct. The said survey was completed on the 3rd day of September 1968.

*D. A. Duffy*  
B.C.L.S.

Sworn before me this 15<sup>th</sup> day of December, 1968.

*[Signature]*  
A Commissioner for taking Affidavits within the Province of British Columbia.

Owner \_\_\_\_\_

Witness \_\_\_\_\_

REAPPROVED  
This 3<sup>rd</sup> day of July, 1971

*[Signature]*  
Approving Officer, Dept. of Highways

Approved under the Land Registry Act  
this 1 day of DECEMBER, 1971

*[Signature]*  
Approving Officer, Dept. of Highways.

THIS PLAN LIES WITHIN THE  
FRASER-FORT GEORGE REGIONAL DIST.

W. D. USHER & ASSOCIATES  
LAND SURVEYORS  
PRINCE GEORGE - B.C.  
CO 9-12 2639.  
FB 48