

Plotted GS.

PLAN OF SUBDIVISION OF PART OF
N.E. 1/4 DISTRICT LOT 4046
CARIBOO DISTRICT, BRITISH COLUMBIA

SCALE: 1" = 200'

NOTE: Bearings are astronomic, derived from the South boundary of the N.E. 1/4 of D.L. 4046 as shown on Plan 13460.

LEGEND: •CIP denotes a capped iron pin set.
•OPP denotes an old pipe post found.
•OIP denotes an old iron pin found.
•IP denotes an iron pin set.
WT denotes a witness.

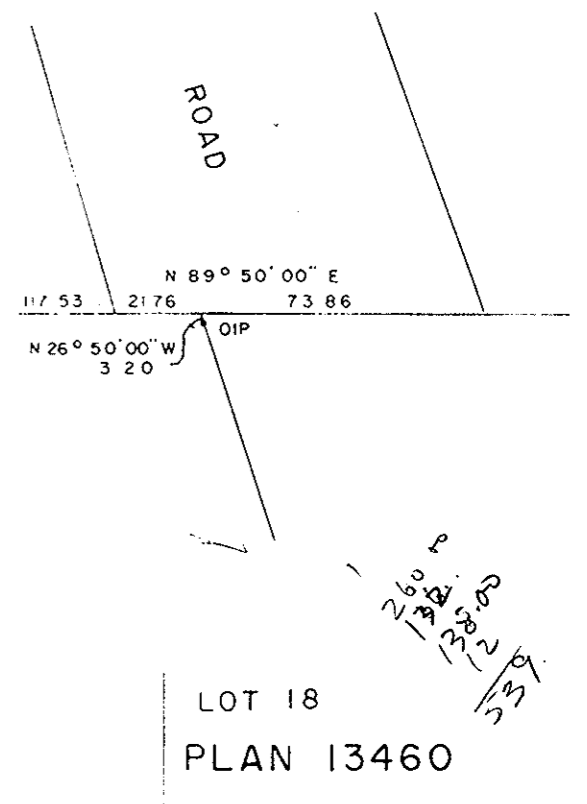
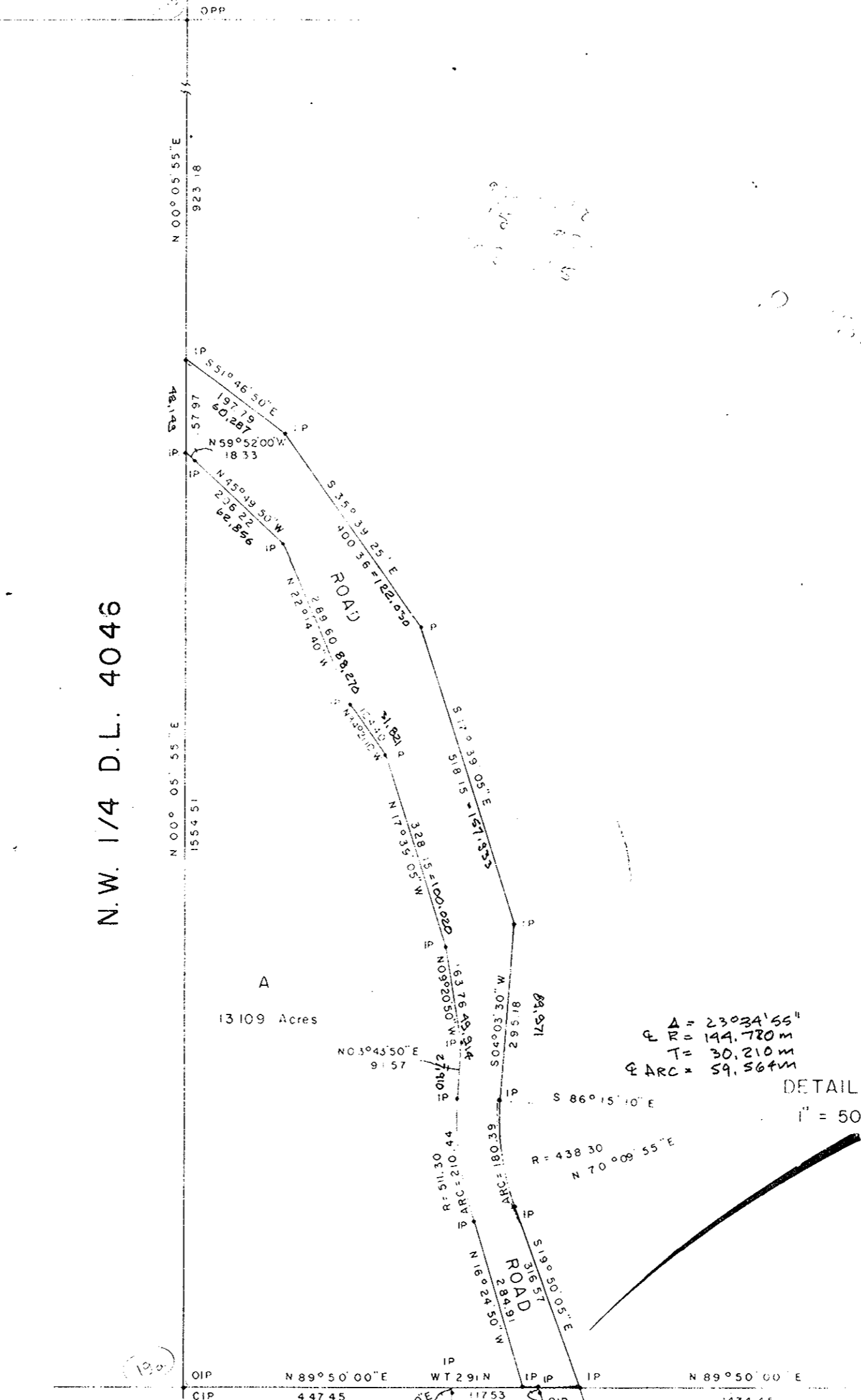
PLAN N^o 20360

Deposited in the Land Registry Office at Prince George, B.C. this 9 day of Sept, 1972

E. J. Separky
Registrar

S.W. 1/4 S.E. 1/4
D.L. 4047 D.L. 4047

N.W. 1/4 D.L. 4046



I, DONALD A. DUFFY of the City of Prince George, a British Columbia Land Surveyor, make oath and say that I was present at and did personally superintend the survey represented by this plan and that the survey and plan are correct. The said survey was completed on the 13th day of August, 1972

Sworn before me this 14th day of August, 1972

A Commissioner for taking Affidavits for British Columbia.

S.W. 1/4 D.L. 4046



LOT 8 PLAN 9294

S.E. 1/4 D.L. 4046

Owner _____

Witness _____

Approved under the Land Registry Act this 4 day of August, 1972

D. A. Duffy
Approving Officer, Dept. of Highways.

This plan lies within the Fraser-Fort George Regional District.

W D USHER & ASSOCIATES
LAND SURVEYORS
PRINCE GEORGE - B.C.