

PLAN OF SUBDIVISION OF PART OF DISTRICT LOT 10238 CARIBOO DISTRICT, BRITISH COLUMBIA

PLAN N^o 20358

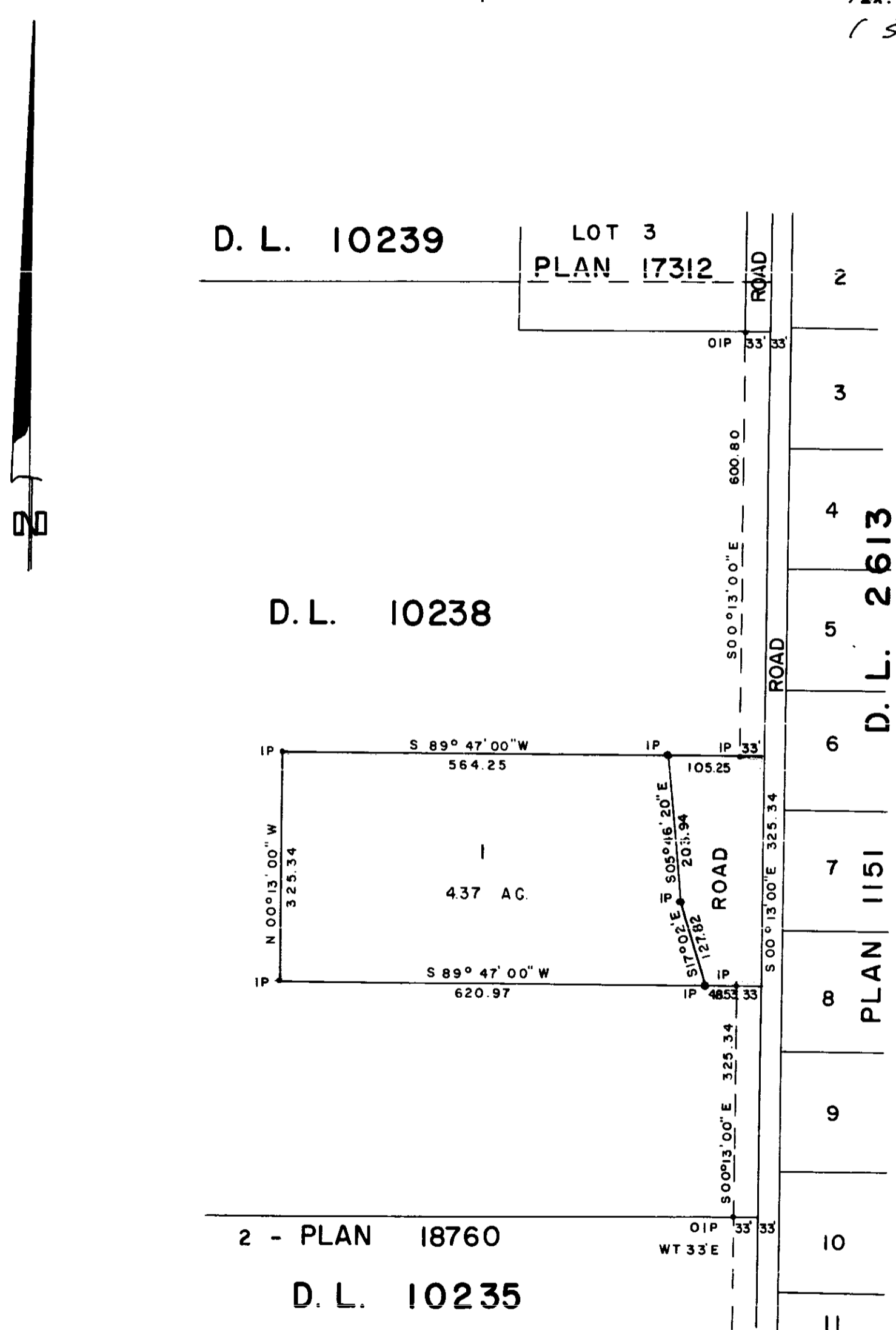
SCALE: 1" = 200'

Deposited in the Land Registry Office at Prince George, B.C. this 7 day of SEPT., 1972

NOTE: Bearings are astronomic, derived from the East boundary of D.L. 10238 as shown on Plan 17312.

LEGEND: •OIP denotes an old iron pin found. •IP denotes an iron pin set.

E.T. SCHADLEY Registrar PER: J. J. Simons (SURVEYOR L.R.O.)



I, DONALD A. DUFFY of the City of Prince George, a British Columbia Land Surveyor, make oath and say that I was present at and did personally superintend the survey represented by this plan and that the survey and plan are correct. The said survey was completed on the 26th day of MAY, 1972.

[Signature of Donald A. Duffy]

Sworn before me this 6 day of SEPT., 1972

[Signature of Commissioner] A Commissioner for taking Affidavits for British Columbia.

Owner: [Signature of Elma Teselke]

Witness: [Signature]

Approved under the Land Registry Act this 29 day of AUGUST, 1972

[Signature of Approving Officer] Approving Officer, Dept. of Highways.

This plan lies within the Fraser-Fort George Regional District.

W. D. USHER & ASSOCIATES LAND SURVEYORS PRINCE GEORGE - B.C. ER 72 EX 64 3679