

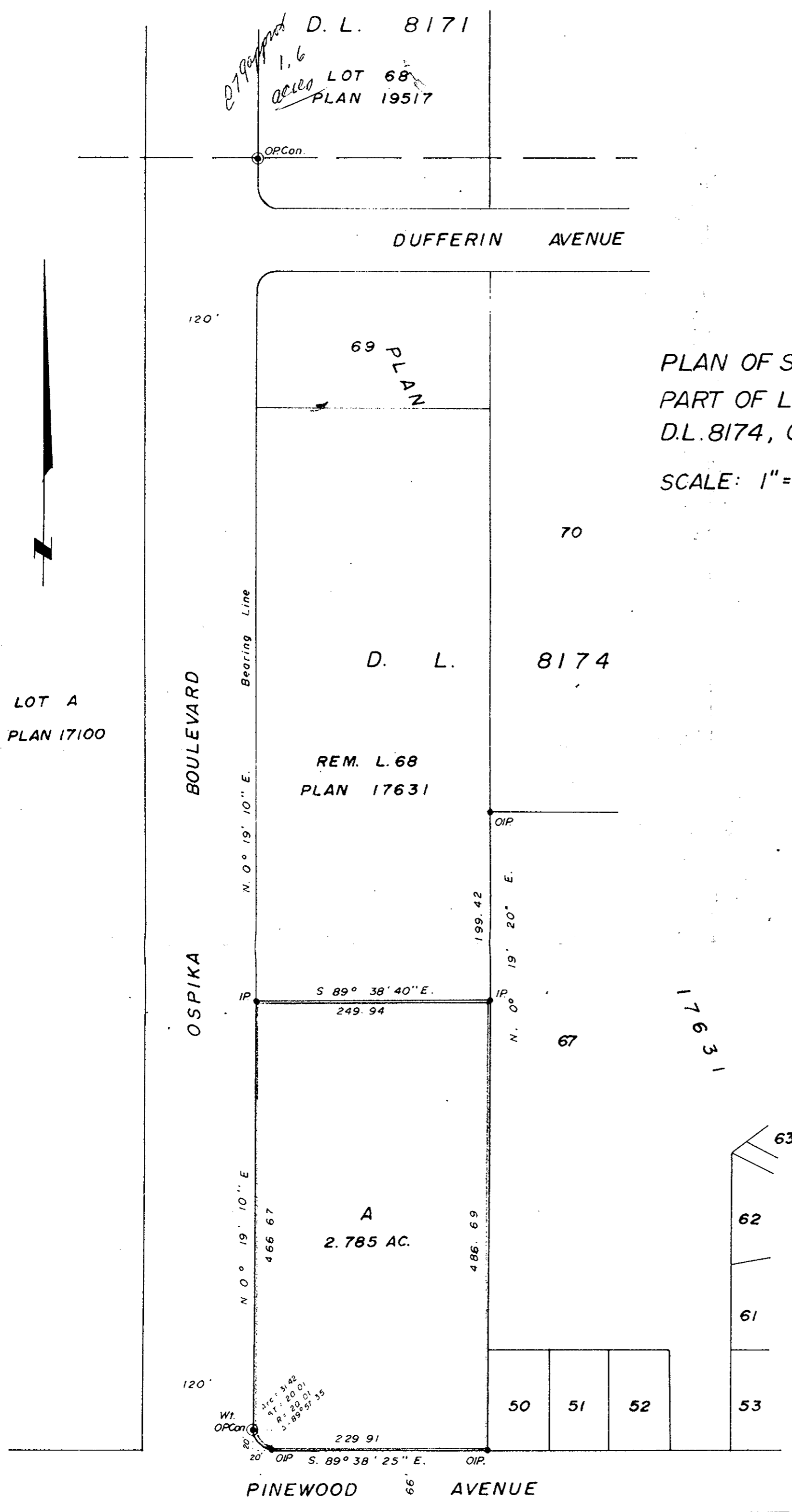
PLAN NO: 20335

REGISTERED IN THE LAND REGISTRY OFFICE AT
PRINCE GEORGE THIS DAY OF

REGISTRAR

PLAN OF SUBDIVISION OF
PART OF LOT 68, PLAN 17631,
D.L. 8174, CARIBOO DISTRICT.

SCALE: 1" = 100'



D. L. 8177

A. DANILUCK OF THE CITY OF PRINCE GEORGE
BRITISH COLUMBIA, LAND SURVEYOR MAKE JURY AND SAY
THAT HE WAS PRESENT AT AND DID PERSONALLY SUPERINTEND
THE SURVEY REPRESENTED BY THIS PLAN, AND THAT THE
SURVEY AND PLAN ARE CORRECT. THE SAID SURVEY WAS
COMPLETED ON THE 9 DAY OF AUGUST 1972

A. Daniluck
B.C.S.

TWORN BEFORE ME AT PRINCE GEORGE, B.C.
THIS 17 DAY OF August 1972

A. COMMISSIONER FOR TAKING AFFIDAVITS
FOR BRITISH COLUMBIA

REPRESENTED BY THE CITY OF PRINCE GEORGE
PLAN 17631

- STANDARD SURVEY METHOD
- PLAN 17631
- PLAN 17631
- PLAN 17631
- PLAN 17631

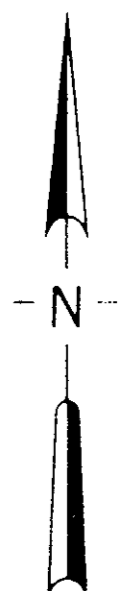
THIS PLAN LIES WITHIN THE FRASER
FORT GEORGE REGIONAL DISTRICT

THIS PLAN LIES WITHIN THE FRASER
FORT GEORGE REGIONAL DISTRICT

[Signature]
CITY OF PRINCE GEORGE

THE SEAL OF THE CITY OF PRINCE GEORGE
WAS AFFIXED HERETO IN THE PRESENCE OF

MAYOR *[Signature]*
CITY CLERK *[Signature]*



McWILLIAM - WHYTE - GOBLE & ASSOCIATES
B.C. LAND SURVEYORS
KAMLOOPS - SMITHERS - PRINCE GEORGE

REF. NO.: 72100-11