

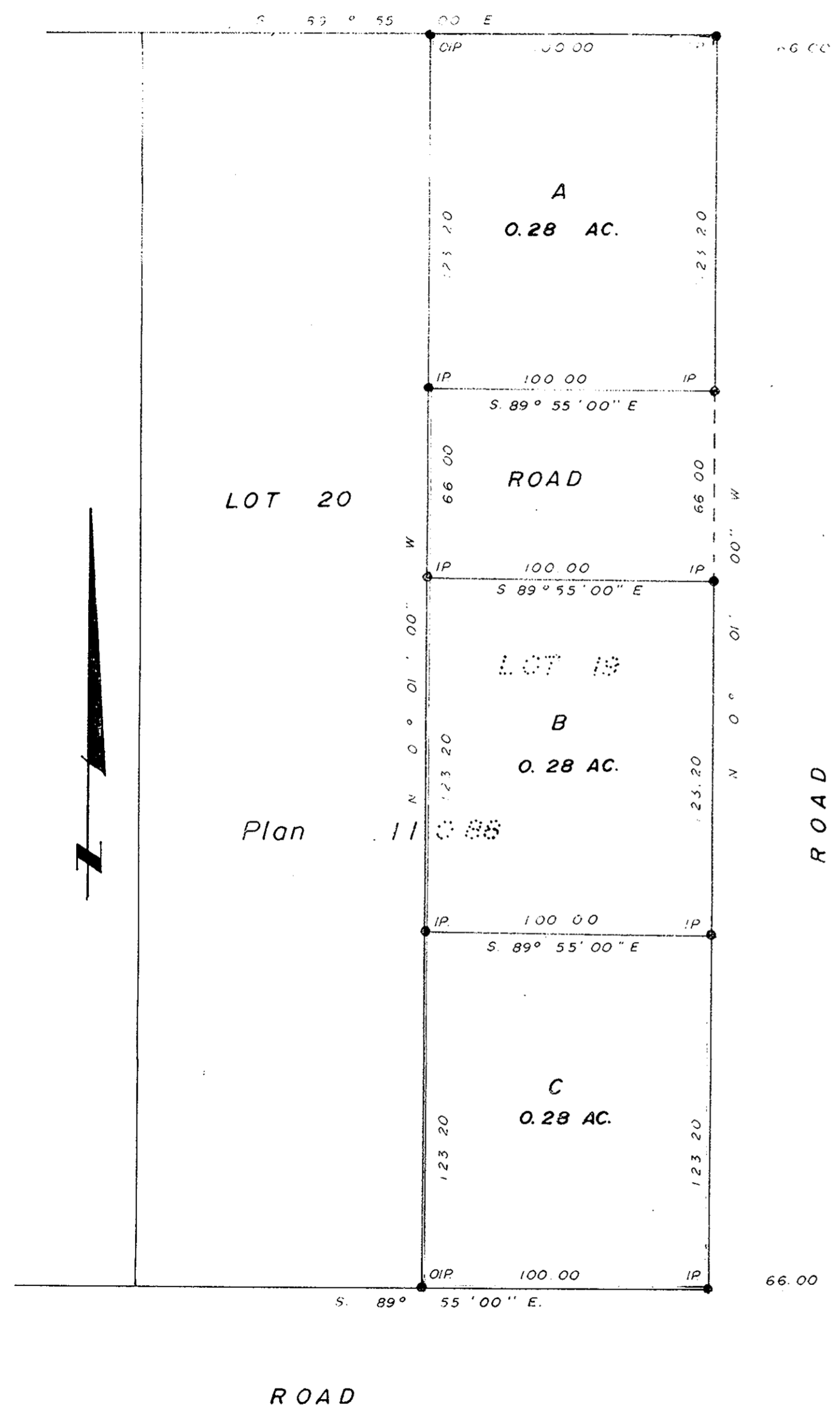
N.E. 1/4 D.L. 4047

PLAN No. 20299

Deposited in the Land Registry Office at Prince George on the 17. day of AUG. 1972

E.T. SCHOOLEY
Registrar
PER: J. Spindler
(SURVEYOR, L.R.O.)

PLAN OF SUBDIVISION OF
LOT 19, PLAN 11088, D.L. 4047,
CARIBOO DISTRICT.
Scale : 1" = 40'



D. L. 4028

- Bearings are astronomic and are derived from East Bdy. Lot 19, shown as N. 0° 01' 00" W. on Plan 11088.
- ⊙ P.con. Standard Concrete Post.
 - ⊙ P.Rock Standard Rock Post.
 - P.P. Standard Pipe Post.
 - I.P. Standard Iron Post.
 - P. Wooden Post.
 - L.P. Lead Plug.
 - Denoting "Old"
 - WT. Denoting "Witness"
 - CIP Capped Iron Post

I, A. Daniuck of the City of Prince George, British Columbia, Land Surveyor, make oath and say that I was present at and did personally superintend the survey represented by this plan and that the survey and plan are correct. The said survey was completed on the 24 day of JULY 1972.

A. Daniuck

Sworn before me at Prince George, B.C. this 24 day of July 1972.

A. Wilson
A Commissioner for taking affidavits for British Columbia.

Owner *Joseph MacL. Nevin*

Witness *Dale L. Brown*

Approved under the Land Registry Act on the 14. day of August 1972.
[Signature]
Approving Officer
Dept. of Highways

This plan lies within the Fraser Regional District.

17	18
PLAN	11088

McWilliam—Whyte—Gable & Associates
B.C. LAND SURVEYORS
PRINCE GEORGE | SMITHERS | KAMLOOPS
REF No. 71134