

PLOTTED, EW, EU

PLAN OF SUBDIVISION OF  
N.W. 1/4 DISTRICT LOT 2423  
CARIBOO DISTRICT, BRITISH COLUMBIA

SCALE: 1" = 200'

NOTE: Bearings are astronomic, derived from the North boundary of the N.W. 1/4 D.L. 2423, as shown on Plan 16198.

LEGEND: \*OPP denotes an old pipe post found.  
\*OIP denotes an old iron pin found.  
\*IP denotes an iron pin set.

PLAN No 20279

Deposited in the Land Registry Office at Prince George, B.C. this 8 day of Aug 1972

E. L. H. [Signature]  
Registrar

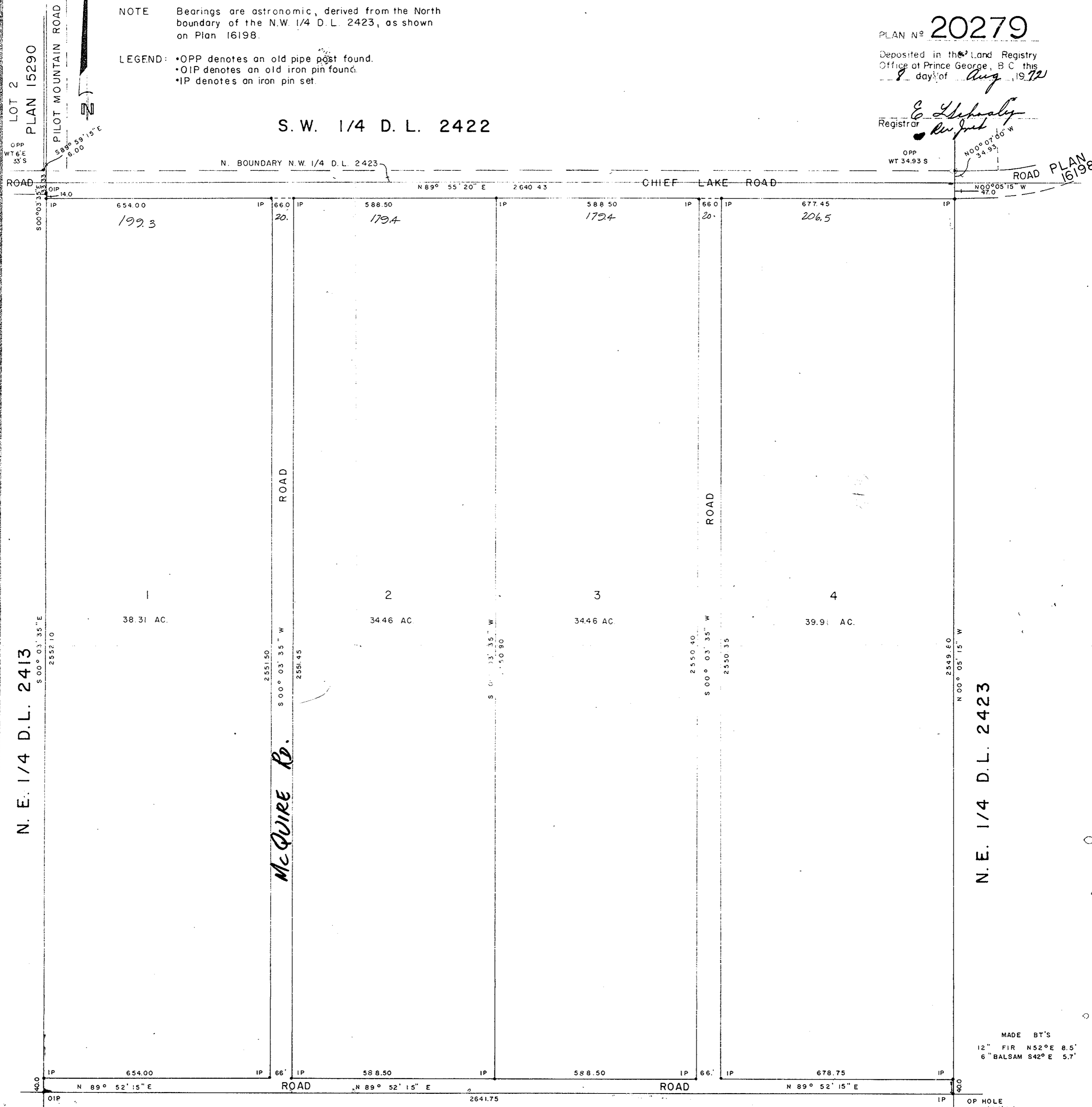
OPP WT 34.93 S

N 00° 07' 00" W  
34.93

ROAD PLAN 16198

S.W. 1/4 D.L. 2422

N. BOUNDARY N.W. 1/4 D.L. 2423



N. E. 1/4 D.L. 2413

N. E. 1/4 D.L. 2423

MADE BT'S  
12" FIR N52°E 8.5'  
6" BALSAM S42°E 5.7'

OP HOLE  
OBT (DOWN)

S.W. 1/4 D.L. 2423

I, DONALD A. DUFFY of the City of Prince George, a British Columbia Land Surveyor, make oath and say that I was present at and did personally superintend the survey represented by this plan and that the survey and plan are correct. The said survey was completed on the 26th day of JULY, 1972.

[Signature]  
B.C.L.S.

Sworn before me this 7th day of August, 1972

[Signature]  
A Commissioner for taking Affidavits for British Columbia.

FGL DEVELOPMENTS LTD.

[Signature]  
PRESIDENT

Approved under the Land Registry Act this 8 day of August, 1972

[Signature]  
Approving Officer, Dept. of Highways.

This plan lies within the Fraser-Fort George Regional District.

W D USHER & ASSOCIATES  
LAND SURVEYORS  
PRINCE GEORGE - B.C.  
FF  
FD 4131 A