

PLAN OF SUBDIVISION OF PARTS OF
 LOT 3, PLAN 9205
 DISTRICT LOT 753 AND FRACTIONAL S.E.
 1/4 & E. 1/2 OF DISTRICT LOT 753
 CARIBOO DISTRICT, BRITISH COLUMBIA

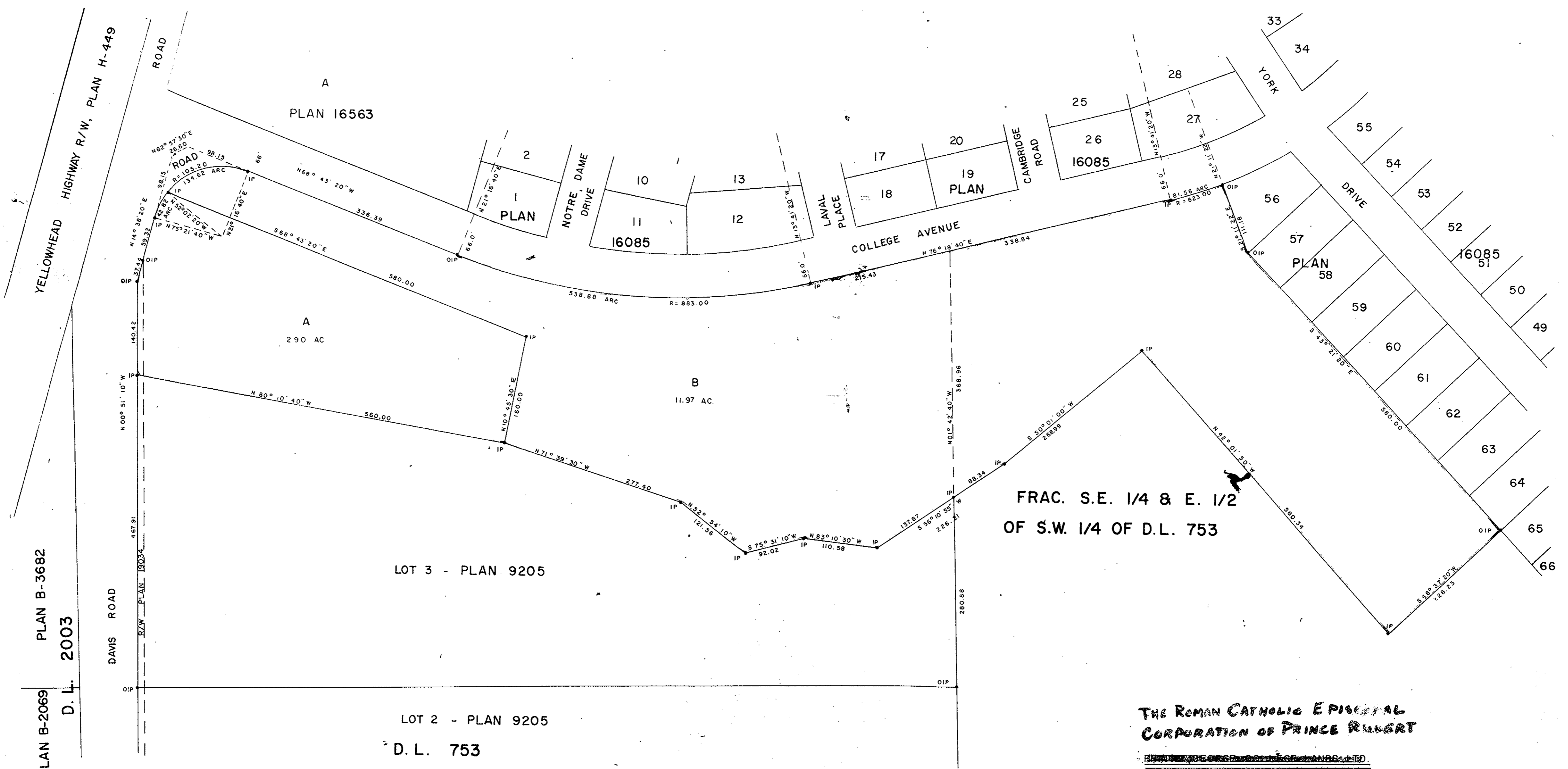
SCALE: 1" = 100'

NOTE: Bearings are astronomic, derived from the West boundary
 of Lot 3, Plan 9205, as shown on Plan 16085.

LEGEND: • OIP denotes an old iron pin found.
 • IP denotes an iron pin set.

PLAN No 20275
 Deposited in the Land Registry
 Office at Prince George, B.C. this
 day of May, 1972

E. J. Schaefer
 Registrar



I, DONALD A. DUFFY of the City of Prince George,
 a British Columbia Land Surveyor, make oath and say
 that I was present at and did personally superintend
 the survey represented by this plan and that the survey
 and plan are correct. The said survey was completed
 on the 17th day of May, 1971.

D. Duffy
 B. C. L. S.

Sworn before me this 15TH
 day of June, 1972
Stib
 A Commissioner for taking Affidavits
 for British Columbia.

THE ROMAN CATHOLIC EPISCOPAL
 CORPORATION OF PRINCE GEORGE

Fergus O'Grady
 President

Approved under the Land Registry Act
 this 5th day of June, 1972

M. G. Elston
 Approving Officer, Dept. of Highways

This plan lies within the Fraser-Fort George
 Regional District.