

PLAN OF RIGHT-OF-WAY THROUGH  
DISTRICT LOT 4047  
CARIBOO DISTRICT, BRITISH COLUMBIA

SCALE 1" = 100'

NOTE: Bearings are astronomic, derived from the South boundary of Lot 1, Plan 20271

LEGEND: •OIP denotes an old iron pin found  
•IP denotes an iron pin set.

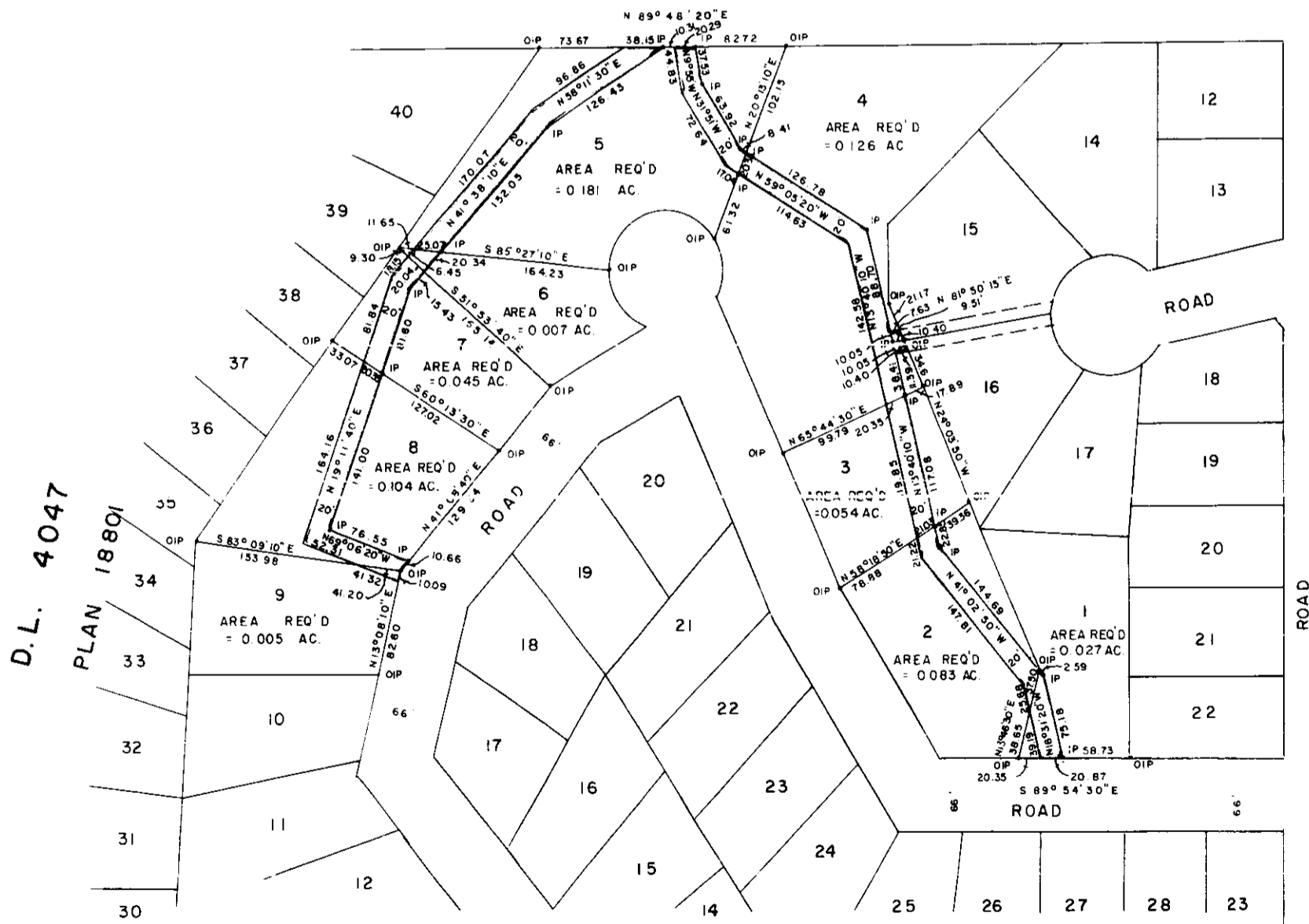
PLAN No. 20273  
Deposited in the Land Registry  
Office at Prince George, B.C. this  
day of Aug, 1972.  
*[Signature]*  
Registrar

BOOK OF REFERENCE

PARCEL	AREA REQ'D
LOT 1, PLAN " D.L. 4047	0.027 AC.
LOT 2, PLAN " D.L. 4047	0.083 AC.
LOT 3, PLAN " D.L. 4047	0.054 AC.
LOT 4, PLAN " D.L. 4047	0.126 AC.
LOT 5, PLAN " D.L. 4047	0.181 AC.
LOT 6, PLAN " D.L. 4047	0.007 AC.
LOT 7, PLAN " D.L. 4047	0.045 AC.
LOT 8, PLAN " D.L. 4047	0.104 AC.
LOT 9, PLAN " D.L. 4047	0.005 AC.



S. E. 1/4 D.L. 2433



I, DONALD A. DUFFY of the City of Prince George, a British Columbia Land Surveyor, make oath and say that I was present at and did personally superintend the survey represented by this plan and that the survey and plan are correct. The said survey was completed on the 15th day of July, 1972.

*[Signature]*  
B.C.L.S.

Sworn before me this 24  
day of July, 1972.

*[Signature]*  
A Commissioner for taking Affidavits  
for British Columbia.

D. L. 4047

This plan lies within the Fraser-Fort George  
Regional District.

A. L. LEHR & ASSOCIATES  
LAND SURVEYORS  
PRINCE GEORGE, B.C.  
EX 54-55 3069 H  
60-62

