

PLAN OF SUBDIVISION OF
 N.E. 1/4 DISTRICT LOT 4047
 CARIBOO DISTRICT, BRITISH COLUMBIA
 EXCEPT PLANS 9543, H226, H1088, 14806,
 17047, 18570, 18719, 18801, 19473, 19550 & 20218

PLOTTED (GU)(HU)

SCALE: 1" = 100

NOTE: Bearings are astronomic, derived from the
 North boundary of Lots 50-55, Plan 19550.

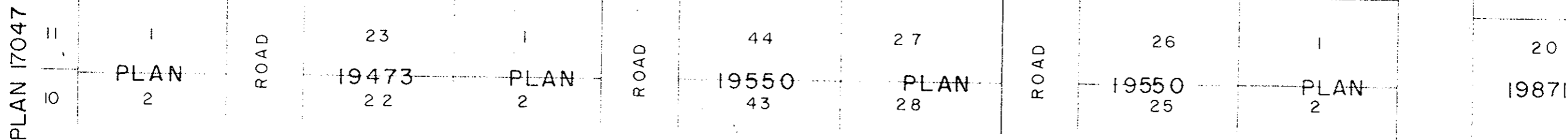
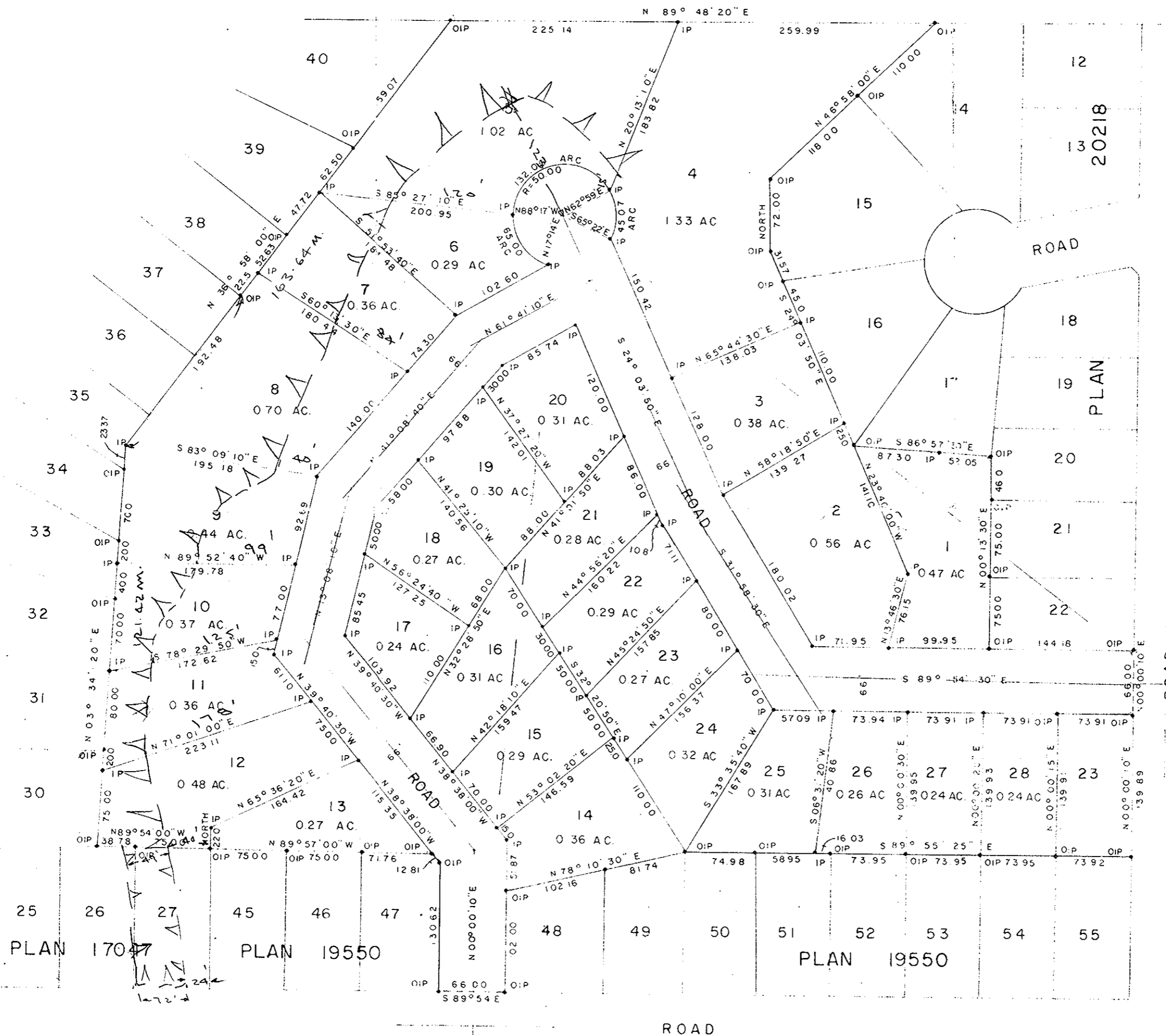
LEGEND: *OIP denotes an iron pin found.
 *IP denotes an iron pin set.

PLAN No **20271**

Deposited in the Land Registry
 Office at Prince George, B.C. this
 4 day of **AUGUST**, 1972

By E.T. SCHOOLEY
 Registrar
 PER: I. S. Finlayson
 (SURVEYOR L.R.O.)

SE 1/4 D.L. 2433



I, DONALD A. DUFFY of the City of Prince George,
 a British Columbia Land Surveyor, make oath and say
 that I was present at and did personally superintend
 the survey represented by this plan and that the survey
 and plan are correct. The said survey was completed
 on the 13 day of July, 1972.

GLENVIEW ESTATES LTD.

MORTGAGEE
CENTRAL WHOLESALE
IMPORTING CO. LTD.

Approved under the Land Registry Act
 this 3 day of AUGUST, 1972

Donald A. Duffy
 President

I. S. Finlayson
 President

W.D. Usher
 Approving Officer, Dept. of Highways.

Sworn before me this 17
 day of August, 1972.

B.C.L.S.

This plan lies within the Fraser-Fort George
 Regional District.

A Commissioner for taking Affidavits
 for British Columbia.

W.D. USHER & ASSOCIATES
 LAND SURVEYORS
 PRINCE GEORGE - B.C.