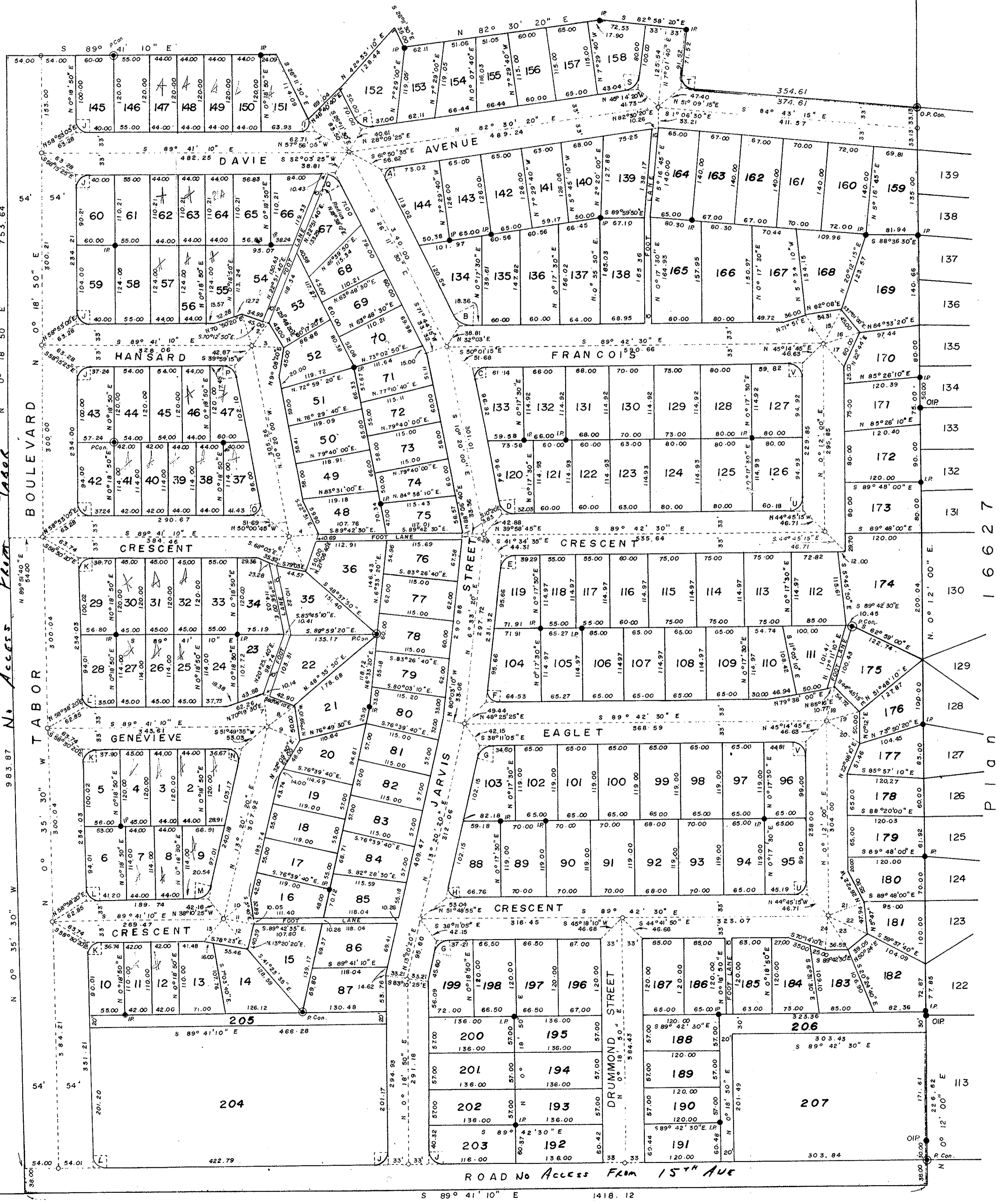


PREPARED PURSUANT TO RE-PLOTTING PROVISIONS
OF THE MUNICIPAL ACT
OF PART OF ASSIGNED PARCEL "A" OF
REFERENCE PLAN -----
DISTRICT LOT 2507, CARIBOO DISTRICT.
SCALE : 1" = 100'

Remainder Assigned Parcel "A"
Ref. Plan -----



No	BEARING	DISTANCE
1	N 17° 05' 55" W	50.30
2	N 39° 55' 10" E	42.87
3	S 82° 55' 15" E	50.30
4	N 87° 13' 10" E	46.39
5	S 24° 14' 20" E	59.63
6	S 22° 47' 05" W	49.78
7	N 3° 46' 45" W	54.42
8	N 56° 41' 05" E	50.73
9	S 66° 18' 30" E	53.88
10	N 50° 20' 50" E	54.85
11	S 80° 34' 20" E	47.10
12	S 38° 09' 30" E	60.04
13	S 49° 04' 10" W	46.47
14	N 29° 09' 05" W	50.97
15	N 29° 09' 00" E	59.48
16	N 74° 02' 50" E	58.28
17	S 39° 53' 10" E	51.24
18	N 15° 25' 40" E	53.75
19	N 76° 13' 30" E	54.39
20	S 54° 51' 50" E	64.38
21	N 7° 30' 35" E	61.23
22	S 65° 47' 30" E	68.96
23	S 31° 40' 40" E	62.48
24	S 4° 04' 50" W	53.11

R = 14.35 Arc = 27.82 ST. = 20.00 Δ = 108° 41' 50"	R = 32.31 Arc = 35.82 ST. = 20.00 Δ = 63° 51' 00"
R = 16.60 Arc = 29.15 ST. = 20.00 Δ = 100° 57' 30"	R = 24.10 Arc = 33.39 ST. = 20.00 Δ = 79° 22' 30"
R = 22.52 Arc = 32.62 ST. = 20.00 Δ = 83° 44' 10"	R = 17.92 Arc = 30.11 ST. = 20.00 Δ = 96° 15' 50"
R = 25.17 Arc = 33.61 ST. = 20.00 Δ = 76° 57' 10"	R = 15.90 Arc = 26.60 ST. = 20.00 Δ = 103° 02' 50"
R = 12.38 Arc = 25.17 ST. = 20.00 Δ = 116° 30' 20"	R = 20.00 Arc = 31.42 ST. = 20.00 Δ = 90° 00' 00"
R = 19.69 Arc = 31.24 ST. = 20.00 Δ = 90° 54' 20"	R = 20.32 Arc = 31.60 ST. = 20.00 Δ = 89° 05' 40"
R = 25.15 Arc = 33.79 ST. = 20.00 Δ = 76° 58' 30"	R = 15.90 Arc = 26.60 ST. = 20.00 Δ = 103° 02' 50"
R = 16.59 Arc = 29.14 ST. = 20.00 Δ = 100° 30' 50"	R = 24.11 Arc = 33.30 ST. = 20.00 Δ = 79° 22' 10"
R = 32.32 Arc = 35.82 ST. = 20.00 Δ = 63° 29' 40"	R = 27.88 Arc = 34.70 ST. = 20.00 Δ = 71° 18' 10"
R = 25.94 Arc = 34.04 ST. = 20.00 Δ = 75° 28' 40"	R = 19.40 Arc = 31.07 ST. = 20.00 Δ = 96° 44' 55"
R = 19.97 Arc = 31.40 ST. = 20.00 Δ = 90° 05' 30"	R = 20.03 Arc = 31.43 ST. = 20.00 Δ = 89° 54' 30"

SUBJECT TO CONDITIONS IMPOSED BY MY ORDER DATED JULY 6, 1972
I ALLOW THIS SUBDIVISION TO BE MADE AND EVIDENCED IN THE MANNER PRESCRIBED
BY SECTION 80 (9), LAND REGISTRY ACT CHAPTER 201, R.S.B.C., 1960.
DATED AT VICTORIA, B.C. THIS 5th DAY OF JULY A.D. 1972.

[Signature]
SURVEYOR GENERAL

THE CONDITIONS OF THE ABOVE MENTIONED ORDER ARE ACCEPTED.
NAME OF SUBDIVIDER : CITY OF PRINCE GEORGE

[Signature]
MAYOR
[Signature]
CITY CLERK

THE ORDER OF THE SURVEYOR GENERAL DATED: _____ B.C.,
HAS BEEN FILED IN THE LAND REGISTRY OFFICE,
AS NUMBER _____

REGISTRAR OF TITLES

BEARINGS ARE ASTRONOMIC AND ARE DERIVED FROM OIPs and O.P.CON
ON WEST BDY. PLAN 16227 SHOWN AS N 0° 12' 00" E.

- IP STANDARD IRON POST
- CIP CAPPED IRON POST
- PP STANDARD PIPE POST
- PCON STANDARD CONCRETE POST.
- DENOTES "OLD"

I, A. DANILUCK, OF THE CITY OF PRINCE GEORGE, BRITISH COLUMBIA
LAND SURVEYOR MAKE OATH AND SAY THAT I WAS PRESENT AT AND
DID PERSONALLY SUPERINTEND THE SURVEY REPRESENTED BY THIS PLAN
AND THAT THE SURVEY AND PLAN ARE CORRECT.
THE SAID SURVEY WAS COMPLETED ON THE 16th DAY OF May 1972.

[Signature]
A. DANILUCK, B.C.L.S.

APPROVED UNDER THE LAND REGISTRY ACT
THIS 24th DAY OF JULY 1972.

[Signature]
APPROVING OFFICER

SWORN BEFORE ME AT PRINCE GEORGE, B.C.
THIS 16th DAY OF May 1972.

COMMISSIONER FOR TAKING AFFIDAVITS FOR
BRITISH COLUMBIA

TOTAL AREA WITHIN RED OUTLINE
57,768 AC.

D.L. 2607
LOT B
PLAN 17284
D.L. 2609
West Bdy. D.L. 2507