

PLAN OF SUBDIVISION OF PART OF
 LOT B - PLAN 16524
 DISTRICT LOT 936
 CARIBOO DISTRICT - BRITISH COLUMBIA

PLAN N^o 20255
 Deposited in the Land Registry
 Office at Prince George, B.C. this
 ___ day of _____, 1972

SCALE: 1" = 100'

NOTE: Bearings are astronomic, derived from the
 West boundary of Lot B, Plan 16524.

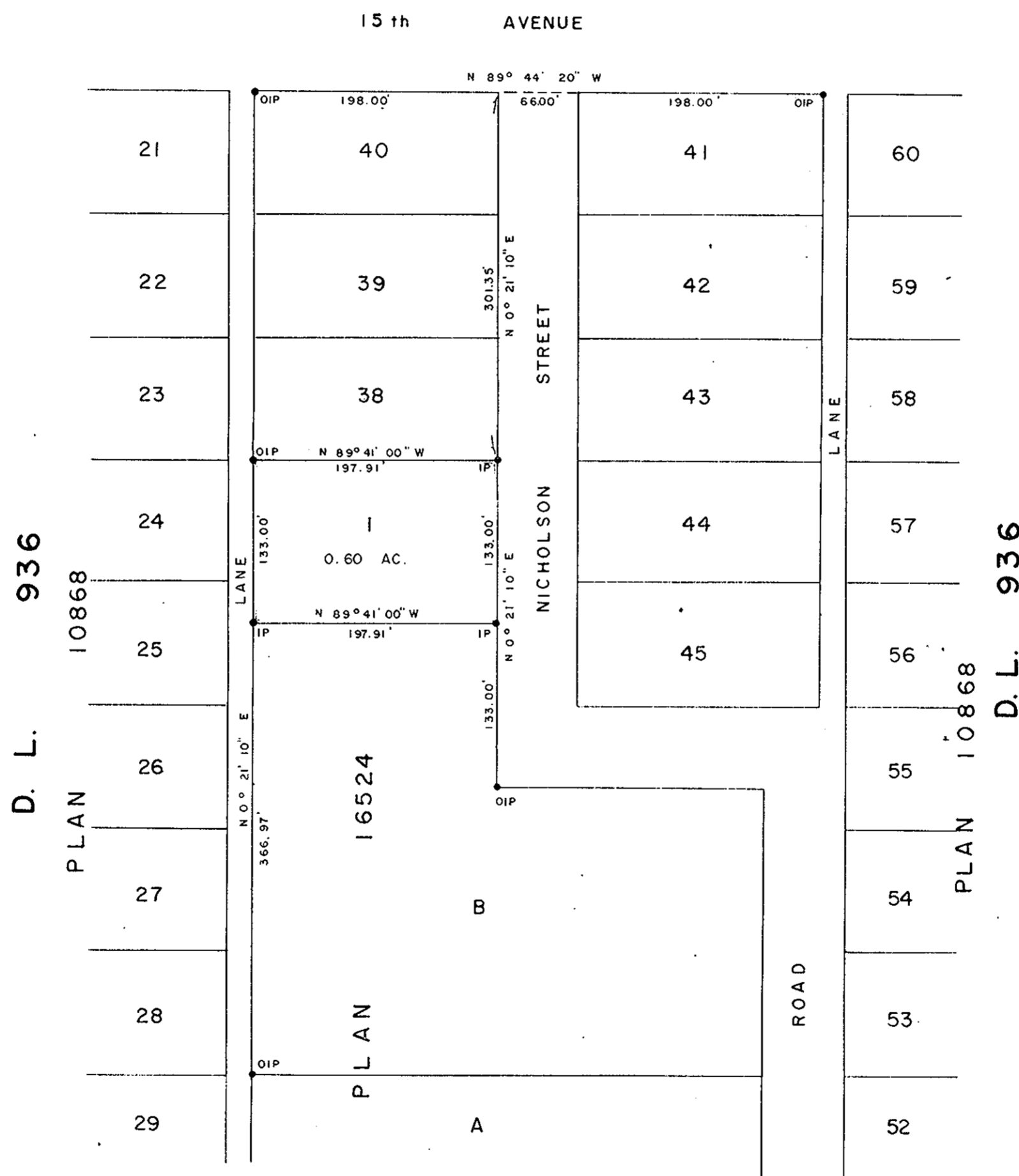
LEGEND: • OIP denotes an old iron pin found.
 • IP denotes an iron pin set.

Registrar

RECEIVED

OCT 31 1972

CITY ASSESSOR
 PRINCE GEORGE



I, DONALD A. DUFFY of the City of Prince George,
 a British Columbia Land Surveyor, make oath and say
 that I was present at and did personally superintend
 the survey represented by this plan and that the survey
 and plan are correct. The said survey was completed
 on the 23rd day of JUNE 1972

[Signature]
 B.C.L.S.

Sworn before me this 13
 day of July, 1972

[Signature]
 A Commissioner for taking Affidavits
 for British Columbia.

CROSS ATLANTIC ENTERPRISES LTD.

[Signature]
 PRESIDENT

City of Prince George

[Signature]
 Mayor
[Signature]
 City Clerk

Approved under the Land Registry Act
 this 10th day of JULY, 1972

[Signature]
 Approving Officer, City of Prince George

This plan lies within the Fraser-Fort George
 Regional District.

W. D. USHER & ASSOCIATES
 LAND SURVEYORS
 PRINCE GEORGE - B.C.
 4282 DX 54