

PLAN OF SUBDIVISION OF PARTS OF
THE FRACTIONAL S.E. 1/4 & THE E. 1/2
OF S.W. 1/4 OF DISTRICT LOT 753, THE
N. 1/2 OF N.W. 1/4 OF DISTRICT LOT 754
AND THE N.E. 1/4 OF DISTRICT LOT 754
CARIBOO DISTRICT, BRITISH COLUMBIA

PLAN No. **20248**
Deposited in the Land Registry
Office at Prince George, B.C. this
25 day of JULY, 1972

SCALE: 1" = 100'

NOTE: Bearings are astronomic, derived from the North
boundary of Massey Drive, Plan 16269.

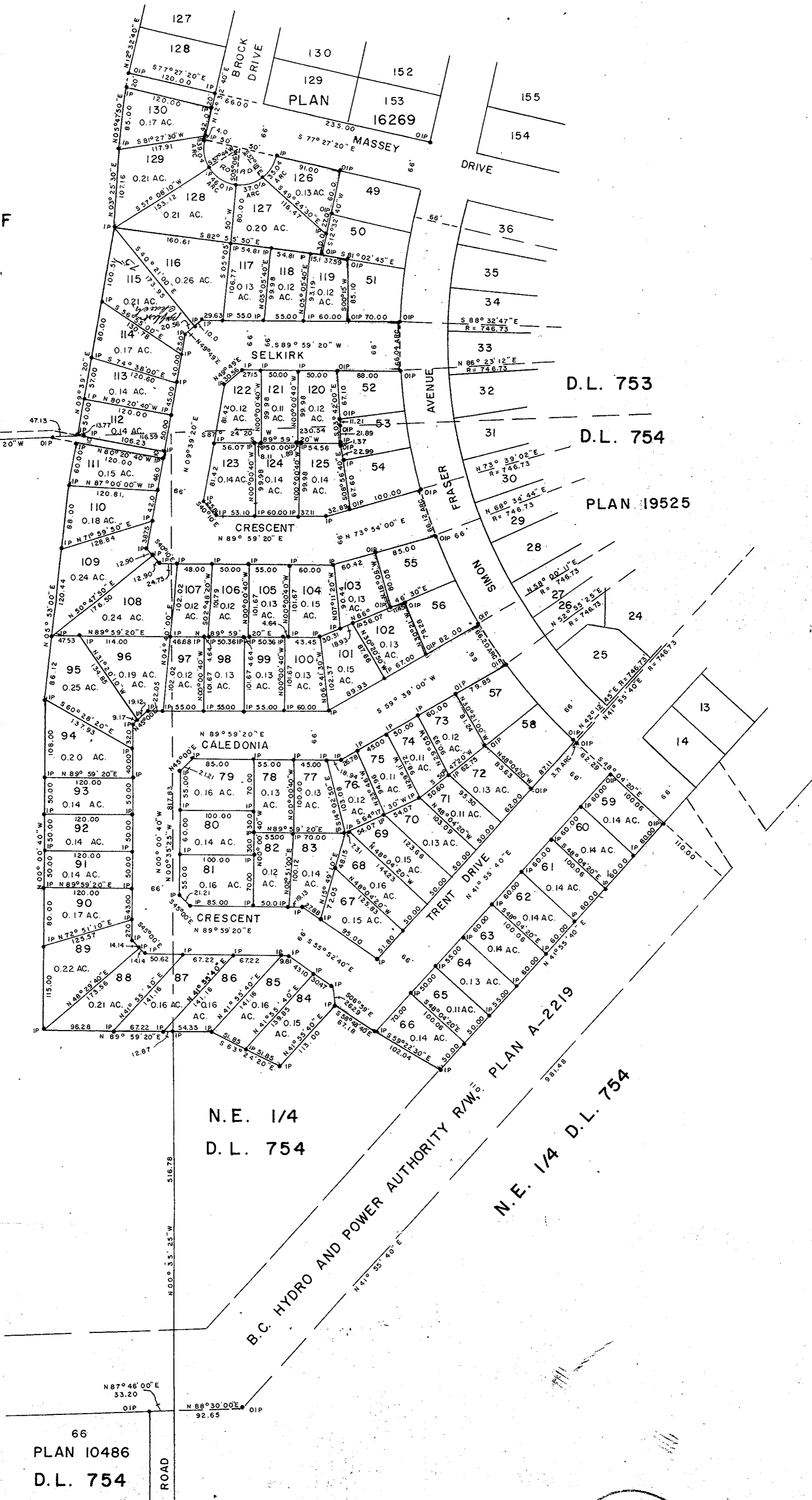
LEGEND: • OIP denotes an old iron pin found.
• IP denotes an iron pin set.

E. T. SCHODLEY
Registrar
Per: J. J. [Signature]
(SURVEYOR L.R.O.)

FRAC. S.E. 1/4 & E. 1/2 OF
S.W. 1/4 OF D.L. 753

For boundary between
quarters nos. 22 & 107 SW corner
see D.F. G 15625

N. 1/2 OF N.W. 1/4 OF D.L. 754



N.E. 1/4
D.L. 754

N.E. 1/4 D.L. 754

66
PLAN 10486
D.L. 754

I, DONALD A. DUFFY of the City of Prince George,
a British Columbia Land Surveyor, make oath and say
that I was present at and did personally superintend
the survey represented by this plan and that the survey
and plan are correct. The said survey was completed
on the 17th day of August, 1971.

Prince George College Lands Ltd.

Peter H. Rees

Mortgagee:
MONTREAL TRUST COMPANY

[Signature]

Micki Embroff

Approved under the Land Registry Act
this 25 day of July, 1972

[Signature]
Approving Officer, Dept. of Highways

This plan lies within the Fraser-Fort George
Regional District.

Sworn before me this 19th
day of July, 1972.

[Signature]
A Commissioner for taking Affidavits
for British Columbia.